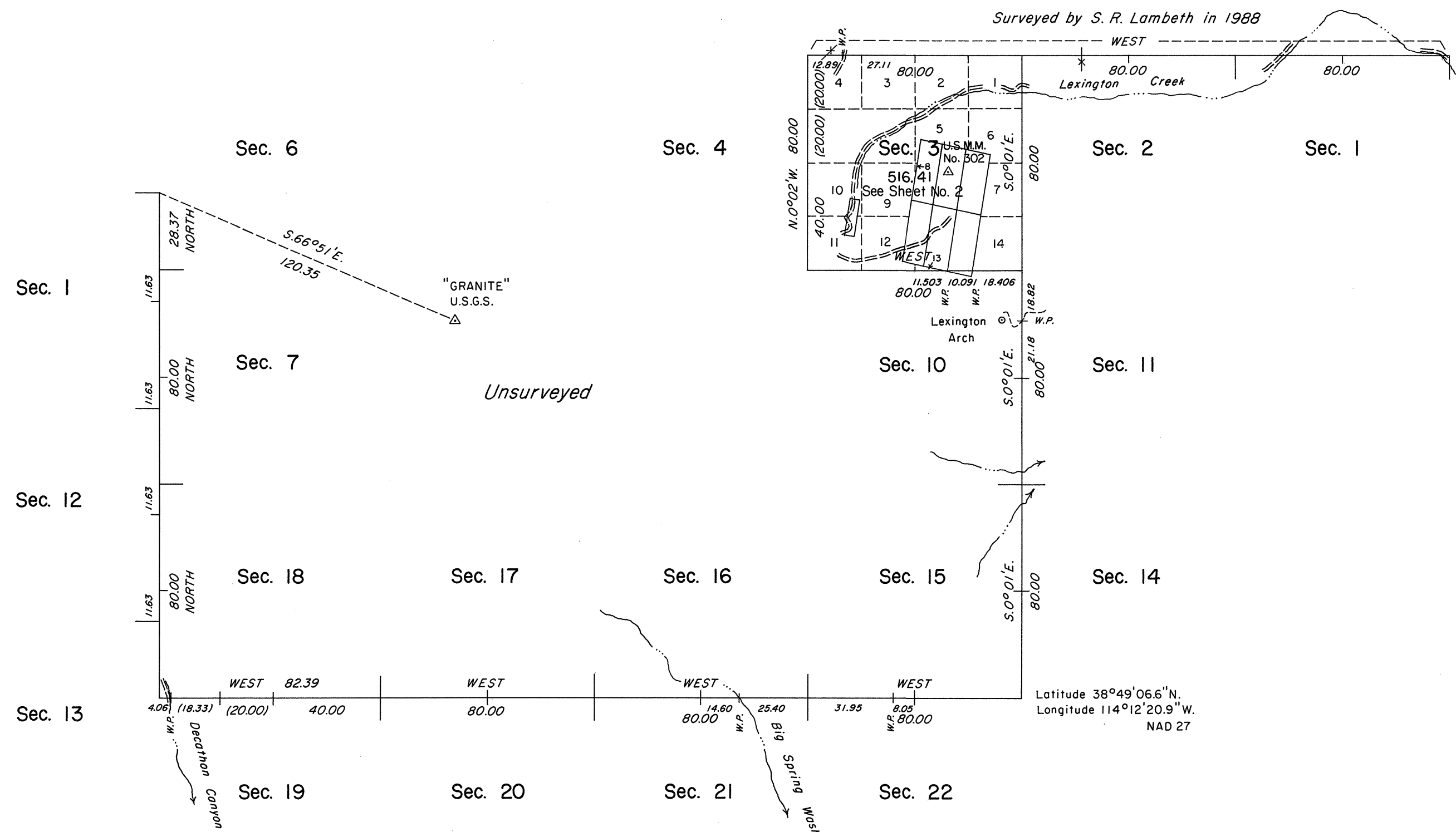


ORIGINAL

Sheet No. 1 of 2 Sheets

TOWNSHIP 11 NORTH, RANGE 69 EAST, OF THE MOUNT DIABLO MERIDIAN, NEVADA
DEPENDENT RESURVEY AND SURVEY



History of the earlier surveys is contained in the field notes.

A survey of a portion of the north boundary was executed concurrently under T. 12 N., R. 69 E., of Group No. 650.

This plat, in two sheets, represents a dependent resurvey of a portion of Mineral Survey No. 4432 A and the remonumentation of a corner of Mineral Survey No. 4432 B, designed to restore the corners in their true original locations according to the best available evidence; and the survey of a portion of the west boundary and a portion of the subdivisional lines of T. 11 N., R. 69 E., Mount Diablo Meridian, Nevada.

Unless otherwise indicated in the field notes, all courses and distances shown on the plat along the perimeter of the mineral segregation areas were taken or computed from the appropriate mineral survey record.

Survey executed by Stephen R. Lambeth, Cadastral Surveyor, beginning July 21, 1988 and completed August 17, 1988, under Special Instructions dated July 12, 1988 for Group No. 661, Nevada.

For an enlargement of sec. 3, see Sheet No. 2.

UNITED STATES DEPARTMENT OF THE INTERIOR
BUREAU OF LAND MANAGEMENT

Reno, Nevada

June 15, 1989

This plat is strictly conformable to the approved field notes, and the survey, having been correctly executed in accordance with the requirements of law and the regulations of this Bureau, is hereby accepted.

For the Director

Lacel E. Bland

Chief Cadastral Surveyor

Scale in Chains
Area Surveyed 516.41 Acres

T. 11 N., R. 69 E., M. D. M.