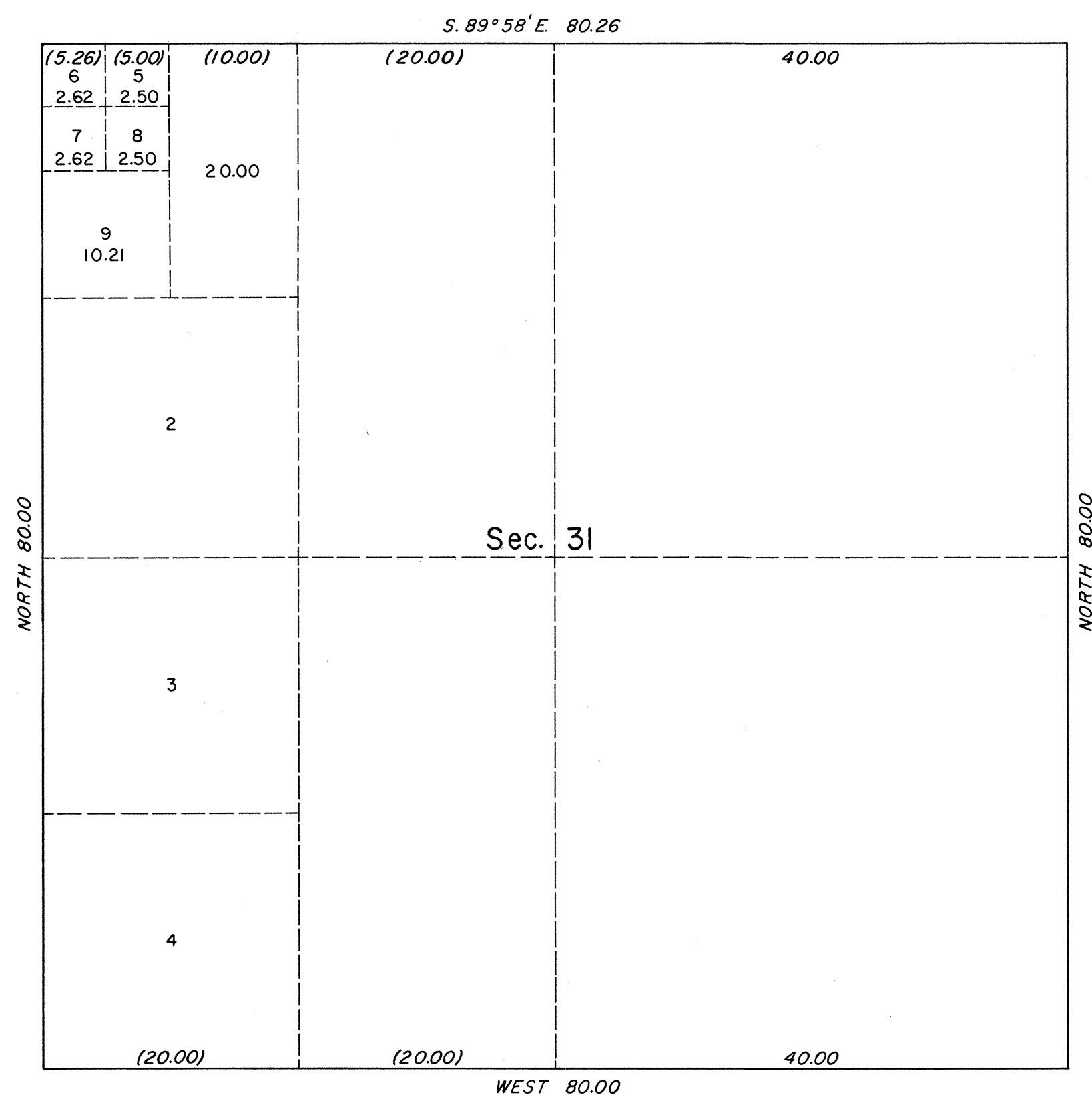


ORIGINAL

OFFICIALLY FILED
NEVADA STATE OFFICE
10:00 AM 6/5/1972

TOWNSHIP 11 NORTH, RANGE 62 EAST, OF THE MOUNT DIABLO MERIDIAN, NEVADA.

SUPPLEMENTAL PLAT OF SECTION 31



This supplemental plat, showing amended lottings in sec. 31, is based on the plat of T. 11 N., R. 62 E., Mount Diablo Meridian, Nevada, approved January 20, 1871.

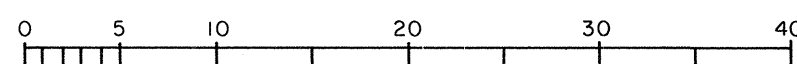
UNITED STATES DEPARTMENT OF THE INTERIOR
BUREAU OF LAND MANAGEMENT
Washington, D.C. May 22, 1972

This plat, showing amended lottings, is based upon the official records and, having been correctly prepared in accordance with the regulations, is hereby accepted.

For the Director

Clark F. Lamm

Chief, Division of Cadastral Survey



Scale in Chains

