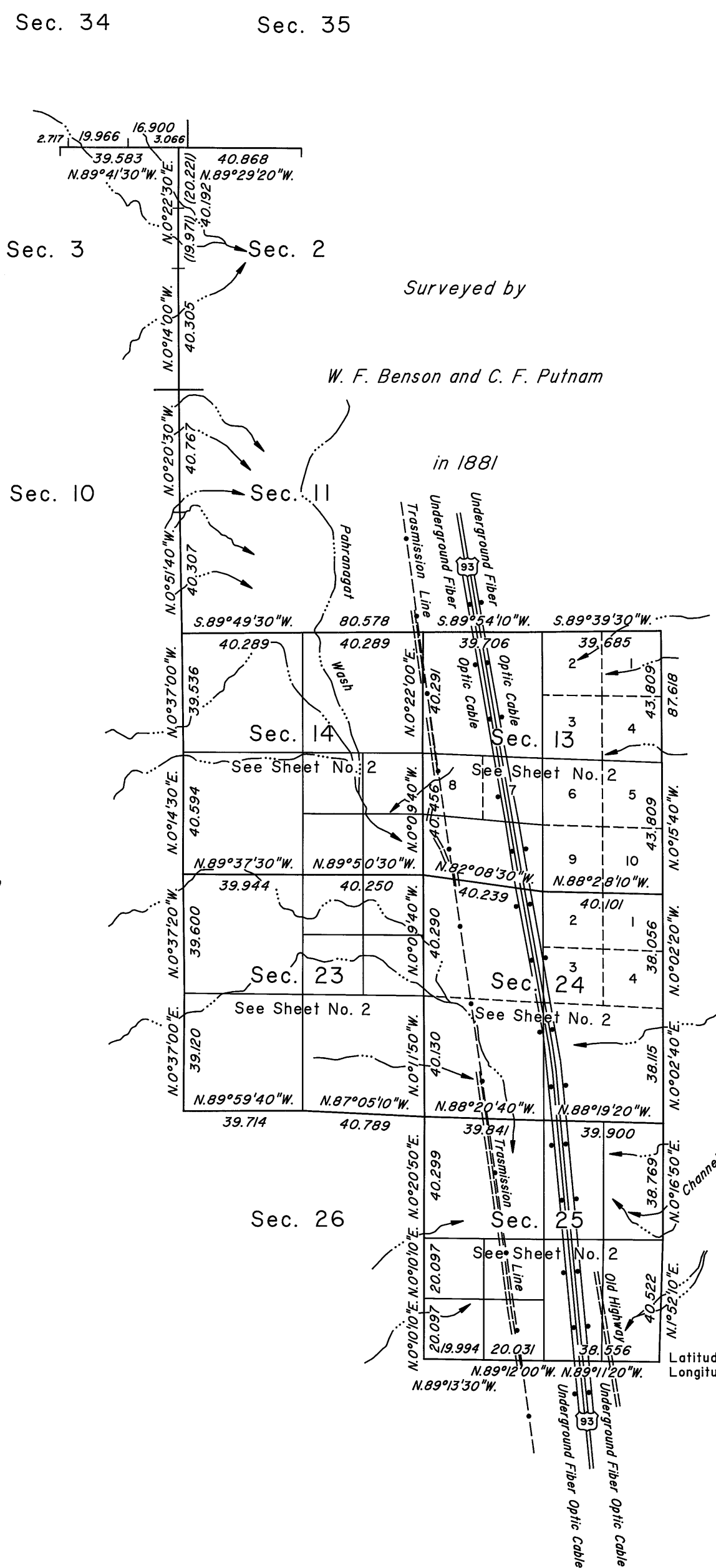


TOWNSHIP 10 SOUTH, RANGE 62 EAST, OF THE MOUNT DIABLO MERIDIAN, NEVADA

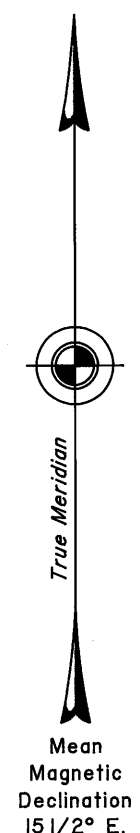
DEPENDENT RESURVEY AND SUBDIVISION

OFFICIALLY FILED
NEVADA STATE OFFICE
at 10:00 AM on December 9, 2008



Surveyed by
W. F. Benson and C. F. Putnam
in 1881

Surveyed by
W. F. Benson and C. F. Putnam
in 1881



A history of surveys is contained in the field notes.

A dependent resurvey of a portion of the north boundary was executed concurrently under Township 9 South, Range 62 East, of this same Group.

This plat represents the dependent resurvey of a portion of the east boundary and a portion of the subdivisional lines designed to restore the corners in their true original locations according to the best available evidence, and the subdivision of certain sections, Township 10 South, Range 62 East, Mount Diablo Meridian, Nevada.

Except as indicated hereon, the lottings and areas are as shown on the plat approved November 8, 1881.

Survey executed by Don R. Aschenbach, Cadastral Surveyor, beginning July 15, 2005, and completed June 12, 2008, pursuant to Special Instructions dated July 12, 2005, for Group No. 828, Nevada.

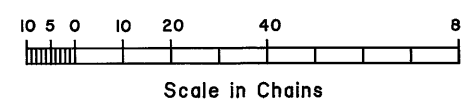
UNITED STATES DEPARTMENT OF THE INTERIOR
BUREAU OF LAND MANAGEMENT

Reno, Nevada December 2, 2008

This plat is strictly conformable to the approved field notes, and the survey, having been correctly executed in accordance with the requirements of law and the regulations of this Bureau, is hereby accepted.

For the Director

Chief Cadastral Surveyor, Nevada



Latitude 37°02'33.004"N.
Longitude 114°58'44.384"W.
NAD 83 (CORS 96)

63