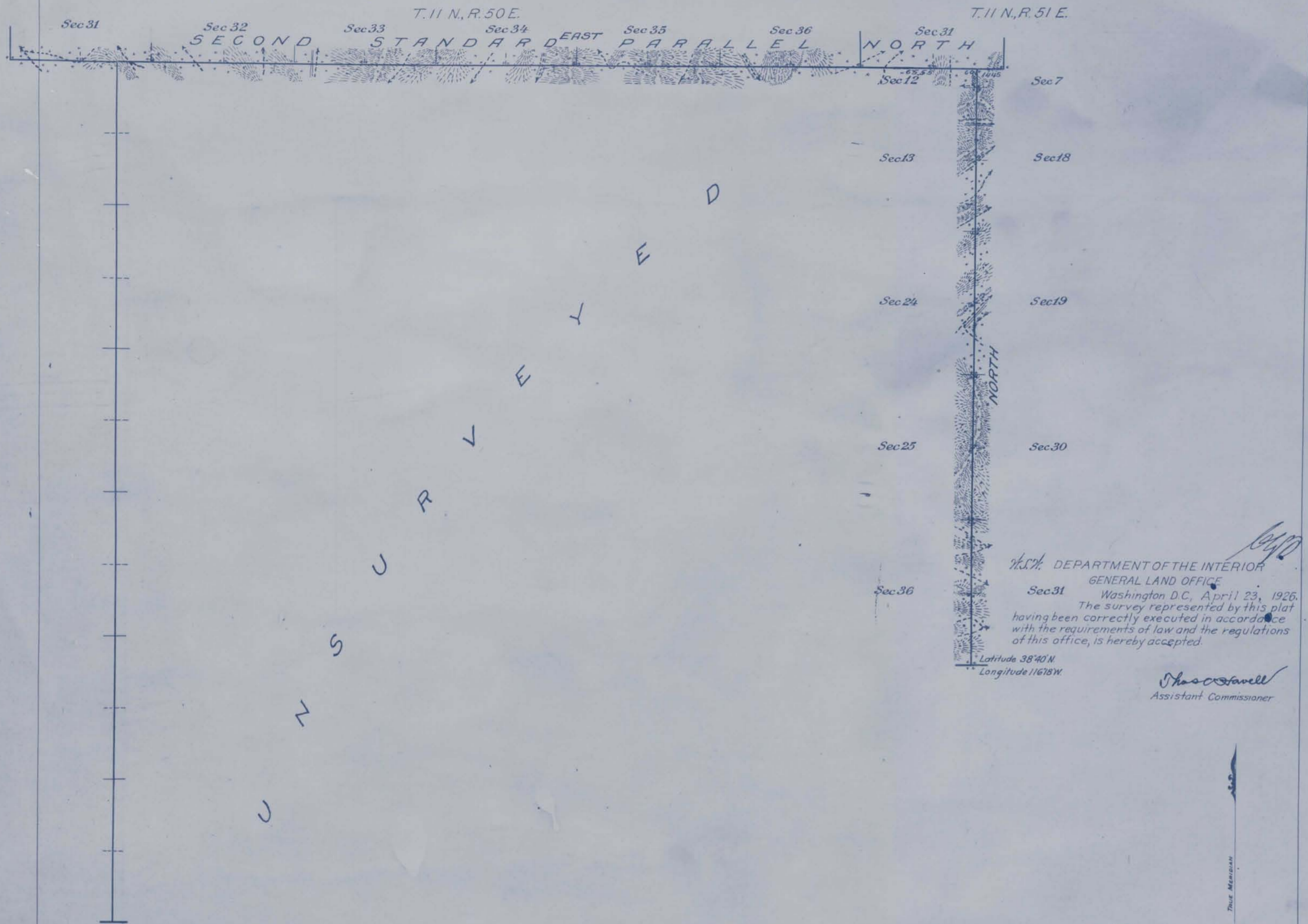


Township N^o 10 North Range N^o 50 East M^t Diablo Meridian, Nevada



DEPARTMENT OF THE INTERIOR
 GENERAL LAND OFFICE
 Washington D.C., April 23, 1926.
 The survey represented by this plat
 having been correctly executed in accordance
 with the requirements of law and the regulations
 of this office, is hereby accepted.

Latitude 38°40' N
 Longitude 116°18' W

Thomas Stowell
 Assistant Commissioner

0 10 20 40 60

Scale 40 Chains to an inch
 Mean Magnetic Declination

Surveys Designated	By Whom Surveyed	Group		Amount of Surveys			When Surveyed	
		No.	Date	Mls.	chs.	lks.	Begun	Completed
2 nd St. Par. North East Boundary	Carl S. Smarholm U.S. Cadastral Engineer	97	Feb. 6, 1922	7	00	00	Nov. 21, 1923	Nov. 24, 1923
				4	10	82	Nov. 2, 1923	Nov. 24, 1923

The above map of Township No. 10 North Range No. 50 East of the M^t Diablo Meridian Nevada is strictly conformable to the field notes of the survey thereof which have been examined and approved
 Office of U.S. Supervisor of Surveys,
 Denver, Colo., Dec. 16, 1925.

Monte Johnson
 U.S. Supervisor of Surveys