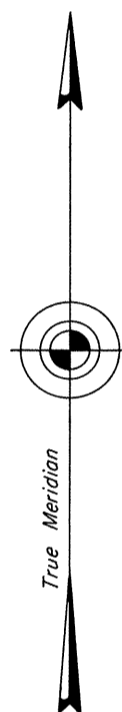


TOWNSHIP 10 NORTH, RANGE 44 EAST, OF THE MOUNT DIABLO MERIDIAN, NEVADA
ENLARGED DIAGRAM OF SECTION 21

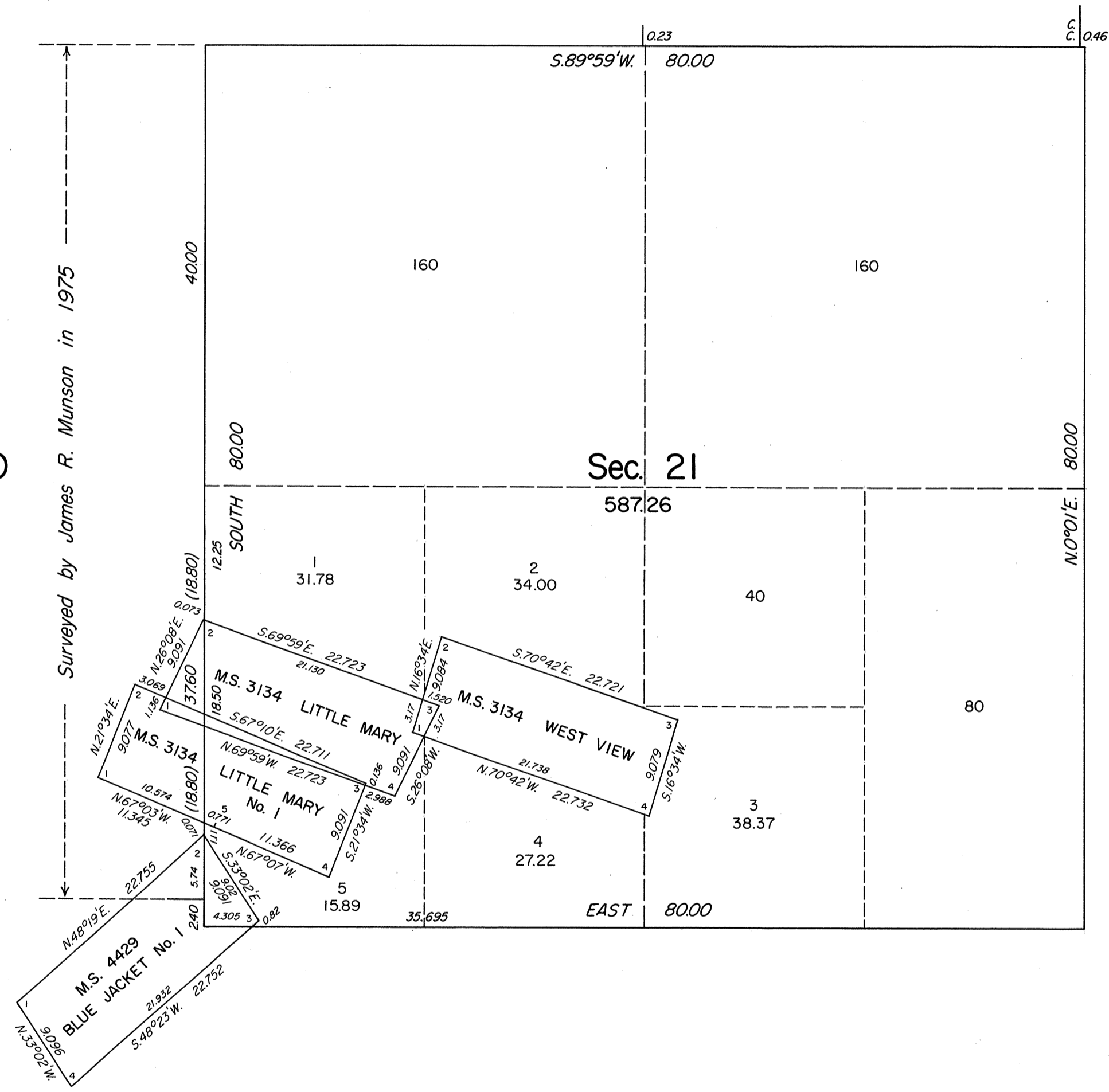
Sec. 16

OFFICIALLY FILED
NEVADA STATE OFFICE
10:00 AM JUL 13 1981
OFFICIALLY FILED
NEVADA STATE OFFICE
December 8, 1981



Sec. 20

Surveyed by James R. Munson in 1975



Reference should be made to Sheet No. 1, for survey information.

UNITED STATES DEPARTMENT OF THE INTERIOR
BUREAU OF LAND MANAGEMENT
Denver, Colorado June 29, 1981

This plat is strictly conformable to the approved field notes, and the survey, having been correctly executed in accordance with the requirements of law and the regulations of this Bureau, is hereby accepted.

For the Director

Gary S. Speight

Acting Chief, Cadastral Survey
Examination and Approval Staff

