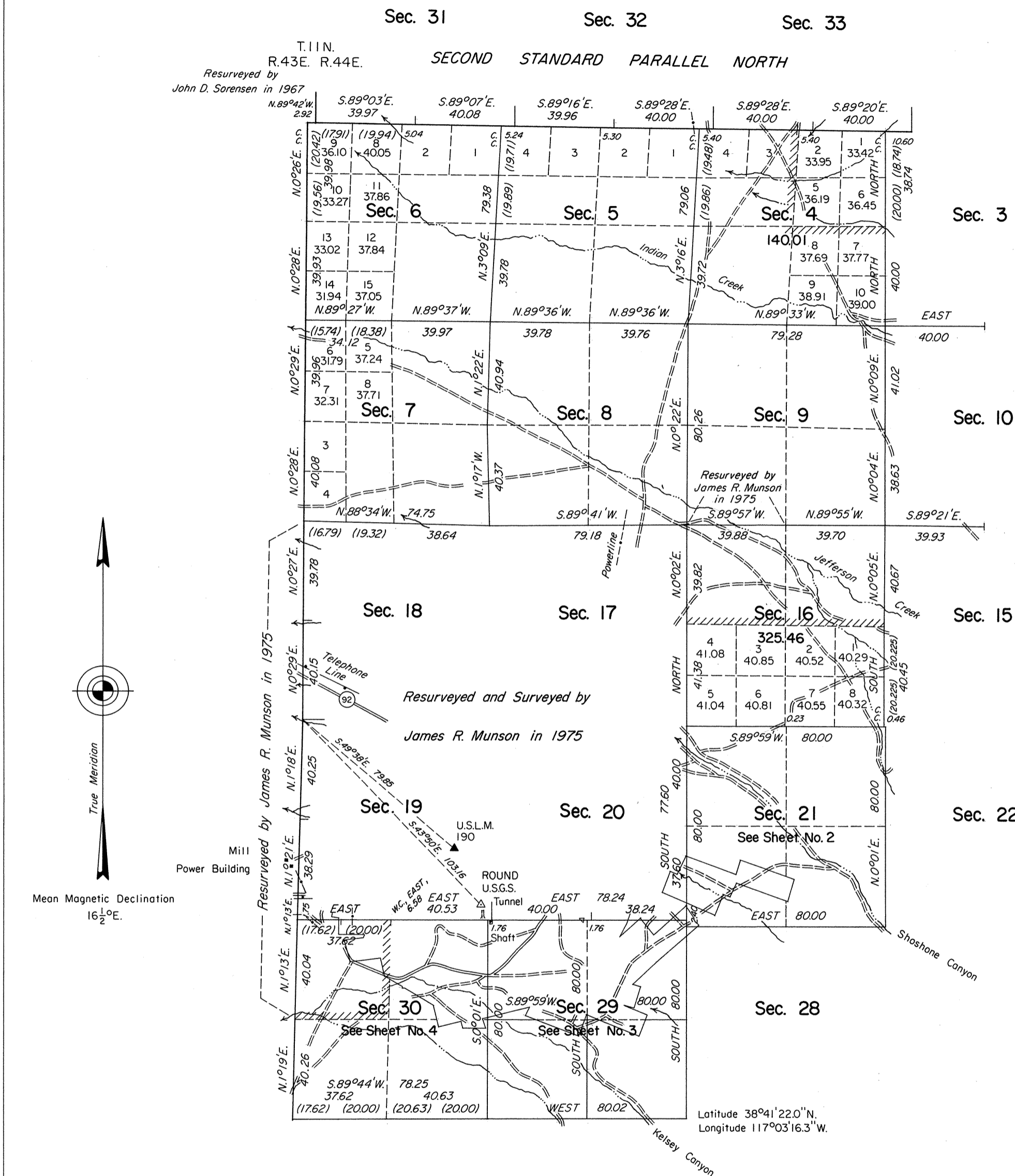


# TOWNSHIP 10 NORTH, RANGE 44 EAST, OF THE MOUNT DIABLO MERIDIAN, NEVADA

## DEPENDENT RESURVEY AND SURVEY



A history of surveys is contained in the field notes.

This plat, in four sheets, represents a retracement of a portion of the Second Standard Parallel North through R. 44 E., a dependent resurvey of a portion of the west boundary and a portion of the subdivisional lines and the retracement and remonumentation of certain corners of Mineral Survey Nos. 4367 and 4429 in T. 10 N., R. 44 E., Mount Diablo Meridian, Nevada, designed to restore the corners in their true original locations according to the best available evidence; and the survey of a portion of the subdivisional lines and the subdivision of section 29 of T. 10 N., R. 44 E.

Except as indicated hereon, the lottings and areas are as shown on the plat approved November 4, 1874.

Unless otherwise indicated in the field notes, all courses and distances shown on the plats along the perimeter of the mineral segregation areas, were taken or computed from the appropriate Mineral Survey record.

Survey executed by Robert A. Pratt, Cadastral Surveyor, beginning June 5, 1978, and completed June 21, 1978, pursuant to Special Instructions dated May 30, 1978, for Group No. 564, Nevada.

Unsurveyed

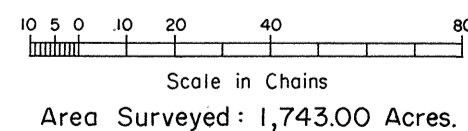
UNITED STATES DEPARTMENT OF THE INTERIOR  
BUREAU OF LAND MANAGEMENT  
Denver, Colorado June 29, 1981

This plat is strictly conformable to the approved field notes, and the survey, having been correctly executed in accordance with the requirements of law and the regulations of this Bureau, is hereby accepted.

For the Director

*Gary S. Speight*

Acting Chief, Cadastral Survey  
Examination and Approval Staff



OFFICIALLY FILED  
NEVADA STATE OFFICE  
19:50 AM JUL 13 1981  
OFFICIAL FILED  
NEVADA STATE OFFICE  
10:00 A.M., December 8, 1981