

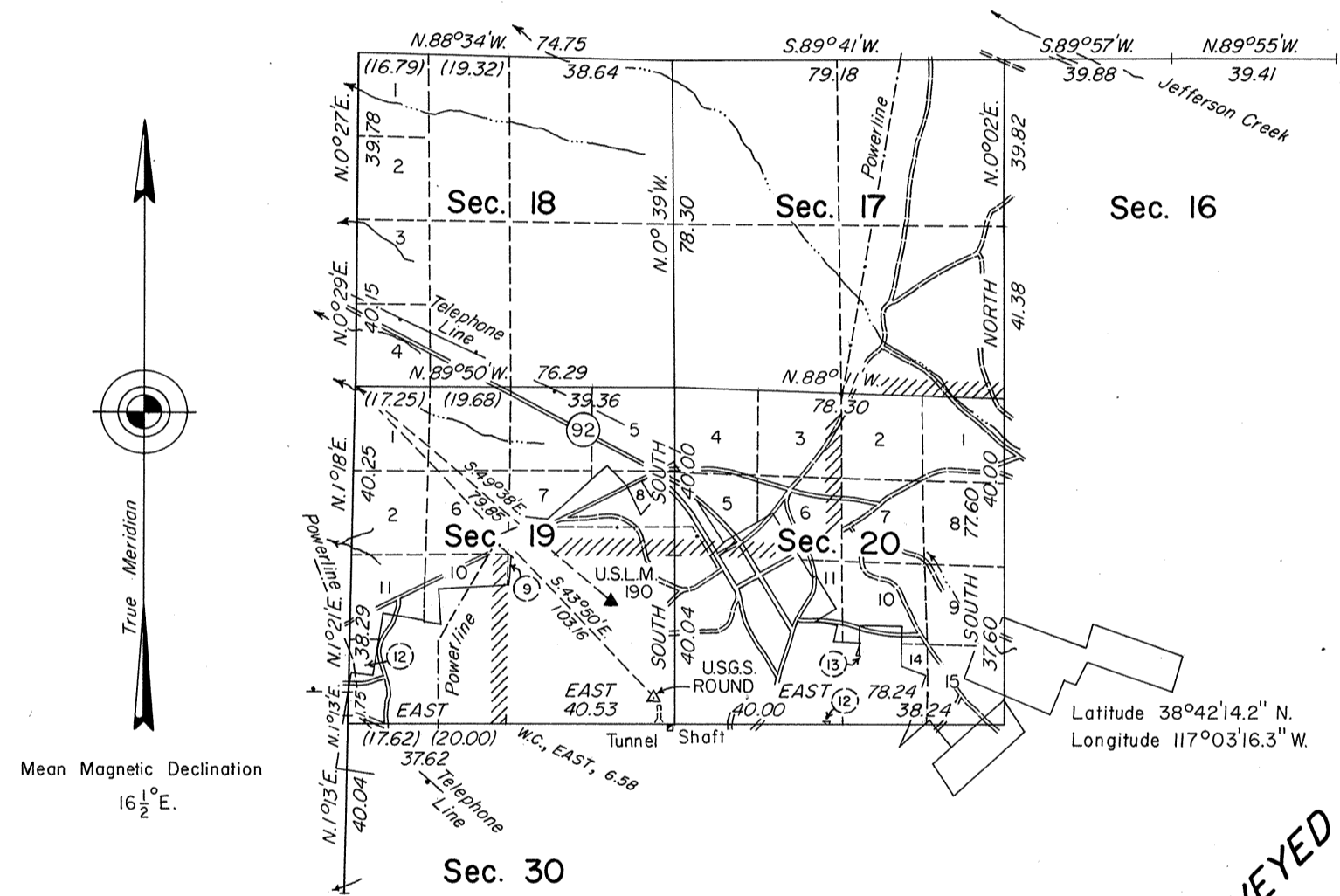
TOWNSHIP 10 NORTH, RANGE 44 EAST, OF THE MOUNT DIABLO MERIDIAN, NEVADA.

DEPENDENT RESURVEY AND SURVEY

OFFICIALLY FILED
NEVADA STATE OFFICE
10:00 A.M., March 17, 1978

Surveyed by D.H. Barker in 1874

Sec. 7 Sec. 8 Sec. 9



A history of surveys is contained in the field notes.

This plat, in three sheets, represents a dependent resurvey of a portion of the west boundary and subdivisional lines of T. 10 N., R. 44 E., and retracement and remonumentation of certain Mineral Surveys, designed to restore the corners in their true original locations according to the best available evidence and the survey of subdivisional lines completing the survey of sections 19 and 20, T. 10 N., R. 44 E.

Lottings and areas, except as shown hereon, are as shown on the plat approved November 4, 1874.

Unless otherwise indicated in the field notes, all courses and distances shown on the plat along the perimeter of the mineral segregation areas, were taken or computed from the appropriate Mineral Survey record.

The position of the corner of sections 19, 24, 25, and 30, on the west boundary has been modified and supersedes the position as determined in the resurvey of the east boundary of T. 10 N., R. 43 E., accepted May 6, 1963.

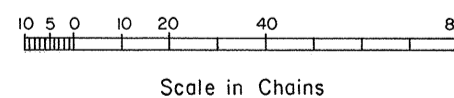
Survey executed by James R. Munson, Cadastral Surveyor, June 17 to July 8, 1975, under Special Instructions dated June 4, 1975, and supplemental Special Instructions dated June 24, 1975, for Group No. 527, Nevada.

UNITED STATES DEPARTMENT OF THE INTERIOR
BUREAU OF LAND MANAGEMENT
Washington, D.C. October 31, 1977

This plat is strictly conformable to the approved field notes, and the survey, having been correctly executed in accordance with the requirements of law and the regulations of this Bureau, is hereby accepted.

For the Director

Acting Chief, Division of Cadastral Survey



Area Surveyed: 267.63 acres