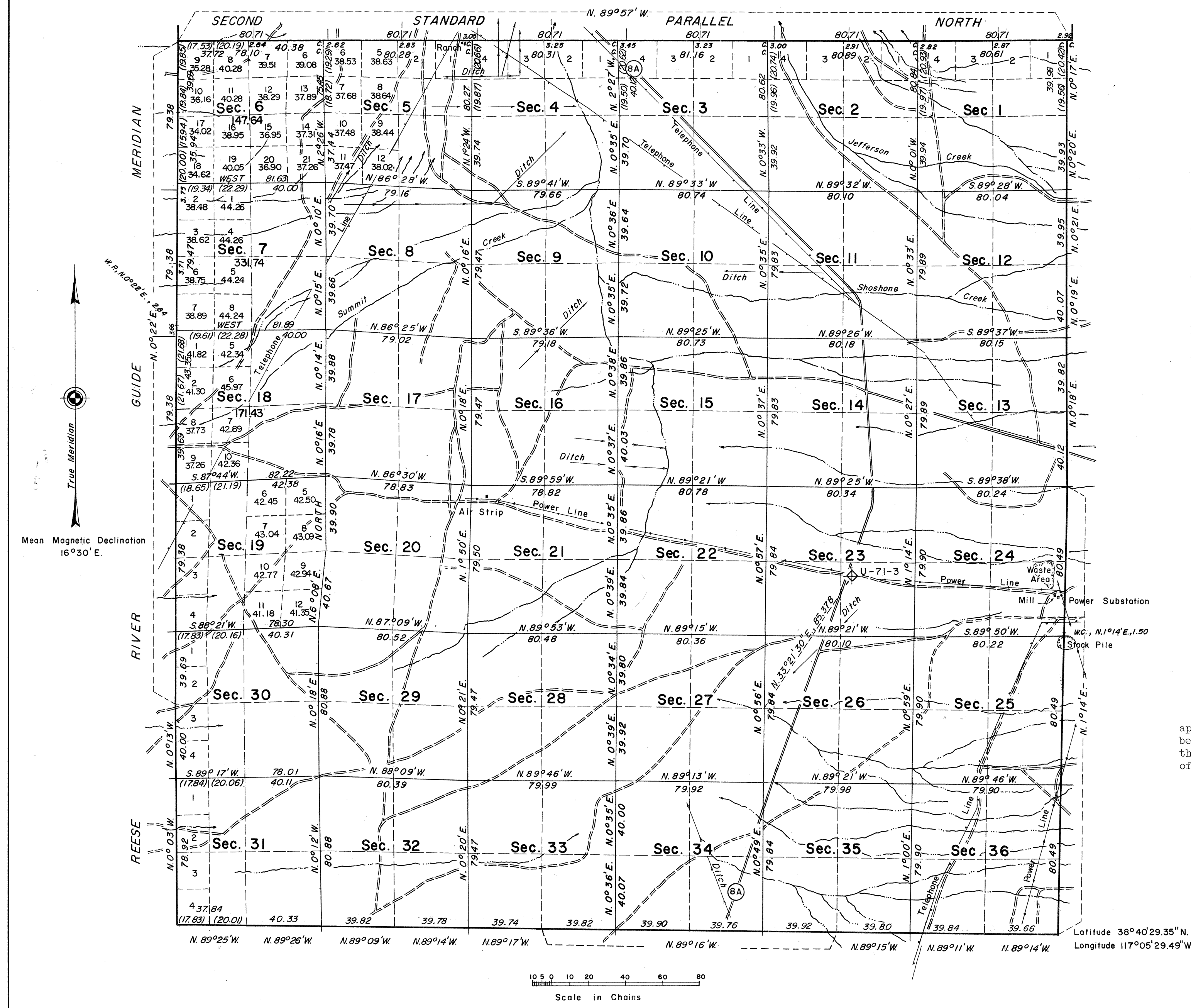


# TOWNSHIP 10 NORTH, RANGE 43 EAST, MOUNT DIABLO MERIDIAN, NEVADA

## COMPLETION SURVEY AND DEPENDENT RESURVEY



True Meridian  
 Mean Magnetic Declination  
 16°30' E.

This plat represents a retracement and reestablishment of the Second Standard Parallel North through Range 43 East, the east, south and west boundaries and a portion of the subdivisional lines designed to restore the corners in their true original locations according to the best available evidence and the survey of a portion of the subdivisional lines to complete the subdivision of Township 10 North, Range 43 East, Mount Diablo Meridian, Nevada.

Except as new or modified vacant subdivisions are shown hereon, the lottings and areas are as shown on the plat approved October 13, 1873.

History of previous surveys is contained in the field note record.

The surveys were executed by Horace G. Parker, beginning October 2, 1961 and completed November 3, 1961, pursuant to special instructions for Group No. 384, Nevada, dated August 13, 1959.

UNITED STATES DEPARTMENT OF THE INTERIOR  
 BUREAU OF LAND MANAGEMENT  
 Washington, D.C. May 6, 1963

This plat is strictly conformable to the approved field notes, and the survey, having been correctly executed in accordance with the requirements of law and the regulations of this Bureau, is hereby accepted.

For the Director  
*E. J. Livingston*  
 Chief, Division of Engineering

Scale in Chains  
 0 10 20 40 60 80

Area Surveyed 650.81 Acres  
 Area Resurveyed 22,357.84 Acres  
 Total 23,008.65

Latitude 38°40'29.35" N.  
 Longitude 117°05'29.49" W.

1468 A

T10N, R43E.