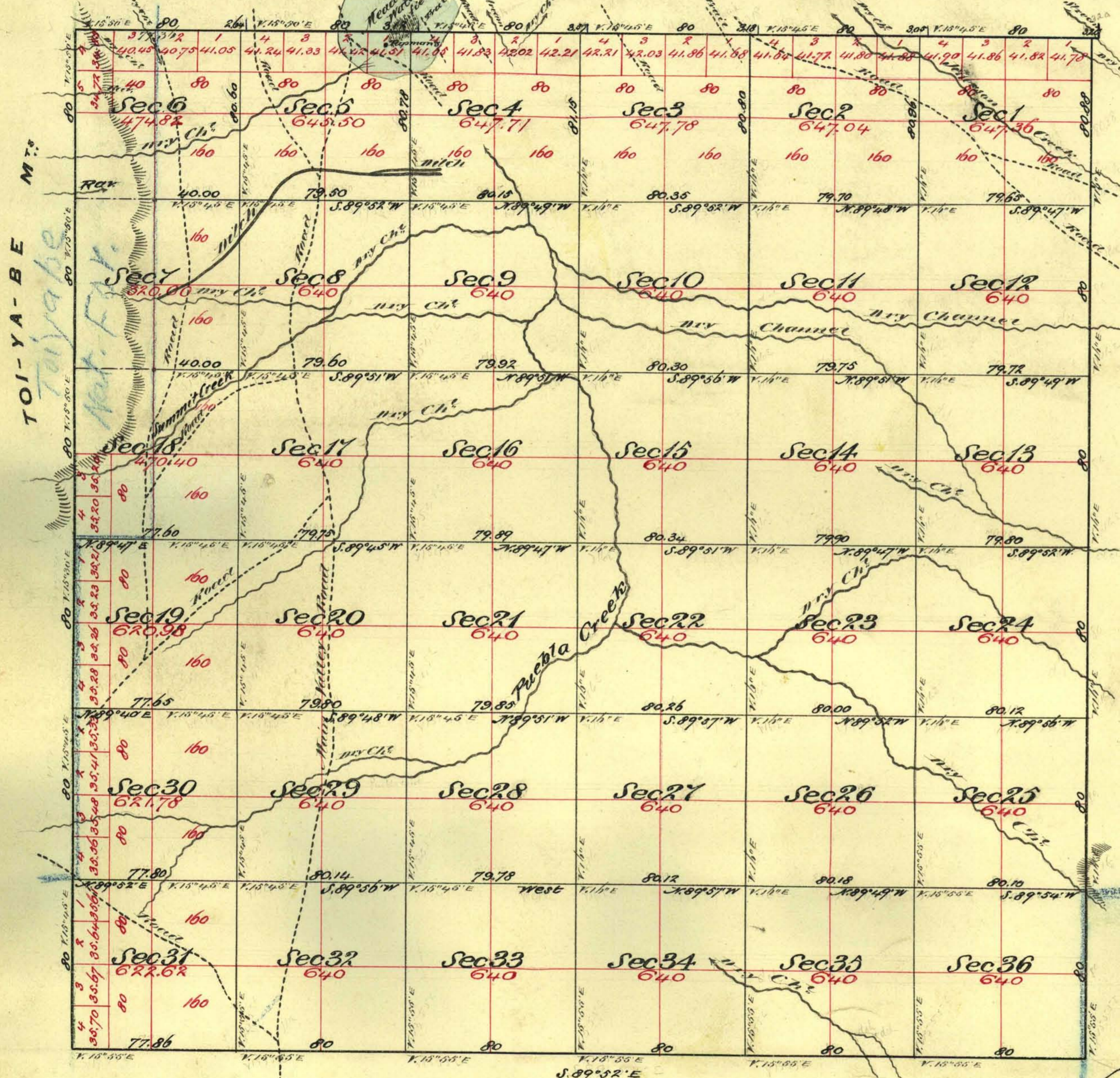


Township N^o 10 North Range N^o 43 East Mount Diablo Meridian



Aggregate Area of Public Land (Surveyed) 22,366.99 Acres
 Estimated " " Mountains (unsurveyed) 599.68 "
 Aggregate 22,966.67 "

Commenced July 31st 1873
 Completed August 6th 1873

The above Map of Township N^o 10 North Range N^o 43 East Mount Diablo Meridian is strictly conformable to the field notes of the surveys thereof on file in this office which have been examined and approved
 U. S. Surveyor General's Office
 Virginia City Nevada
 October 13th 1873

Surveys Designated	By Whom Surveyed	Date of Contract	Am ^t of Survey	When Surveyed	N ^o Com.
West Boundary	C. C. Tracy	July 2 nd 1867	6 00 00	1867	3
West of Township lines	A. Hatch & H. Bruner & C. Briggs	June 14 th 1873	17 78 74	1873	57
Subdivision lines	" " " " " "	" " " " " "	58 76 01	August 1873	"
Convergency "	" " " " " "	" " " " " "	15 56	"	"

T 10 N, R 43 E. E. S. Davis
 U. S. Surveyor General Nevada V.D.