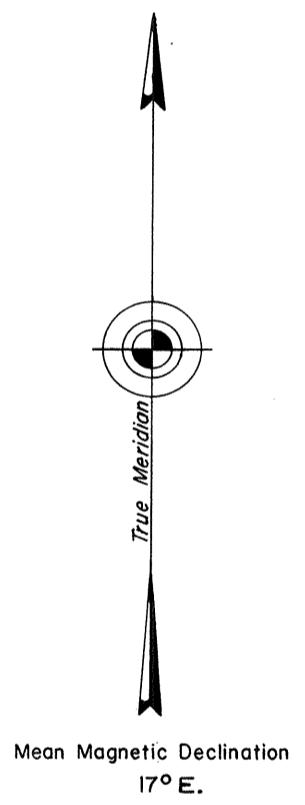
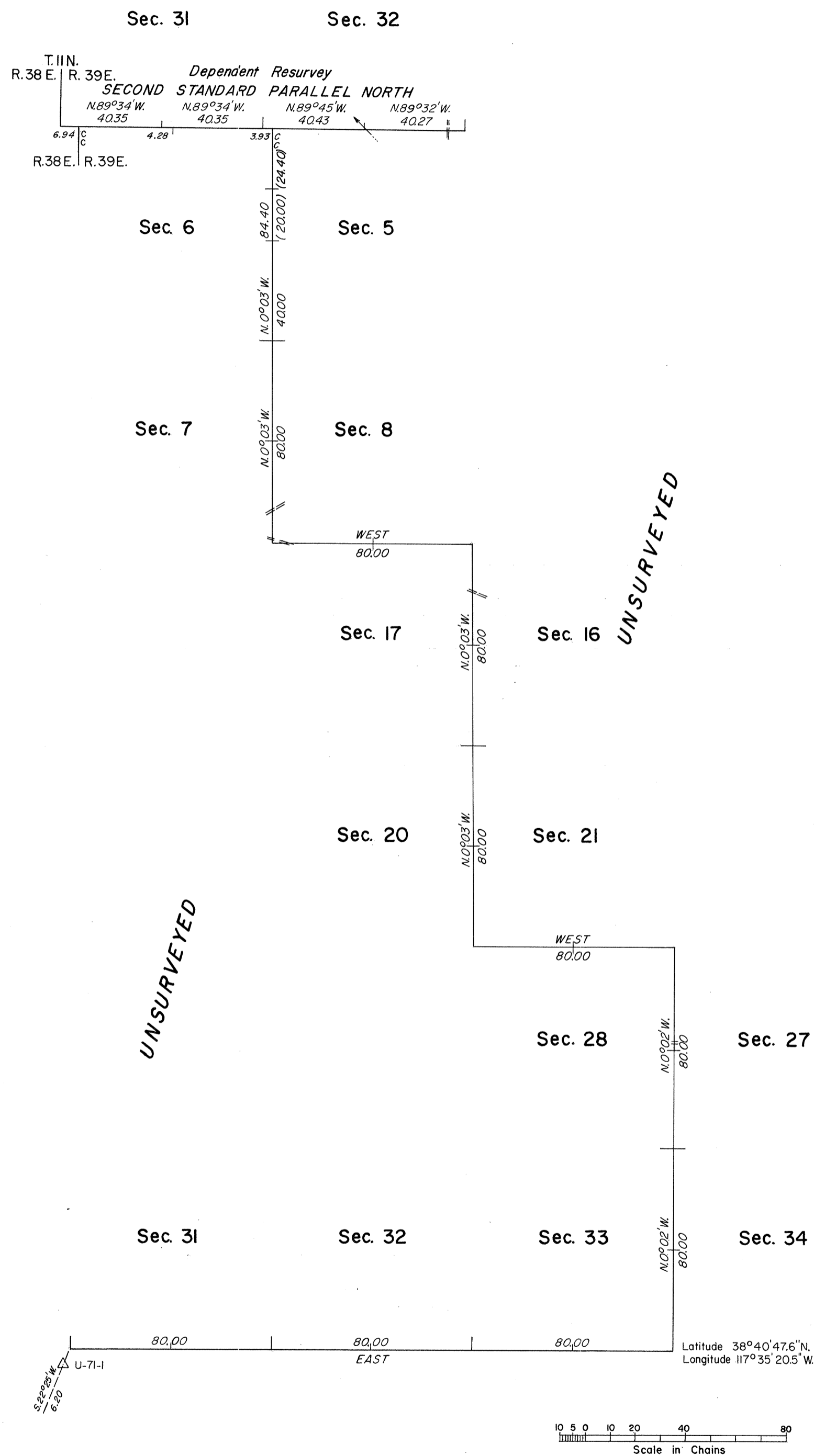


OFFICIALLY FILED  
NEVADA STATE OFFICE  
10:00 A.M., May 11, 1978

# TOWNSHIP 10 NORTH, RANGE 39 EAST, OF THE MOUNT DIABLO MERIDIAN, NEVADA



A history of surveys is contained in the field notes.

A survey of a portion of the south boundary was executed concurrently under T. 9 N., R. 39 E., of this same group.

This plat represents a dependent resurvey of the Second Standard Parallel North, through a portion of R. 39 E., designed to restore the corners in their true original locations according to the best available evidence, and the survey of a portion of the subdivisional lines of T. 10 N., R. 39 E., Mount Diablo Meridian, Nevada.

Survey executed by Robert A. Pratt, Cadastral Surveyor, August 2 to October 6, 1977, under Special Instructions dated July 27, 1977, for Group No. 552, Nevada.

UNITED STATES DEPARTMENT OF THE INTERIOR  
BUREAU OF LAND MANAGEMENT  
Washington, D.C. April 26, 1978

This plat is strictly conformable to the approved field notes, and the survey, having been correctly executed in accordance with the requirements of law and the regulations of this Bureau, is hereby accepted.

For the Director

*Bernard W. Foster*  
Chief, Division of Cadastral Survey