

ORIGINAL

OFFICIALLY FILED
NEVADA STATE OFFICE
7:30 AM
January 19, 1981

TOWNSHIP 10 NORTH, RANGE 38 EAST, OF THE MOUNT DIABLO MERIDIAN, NEVADA

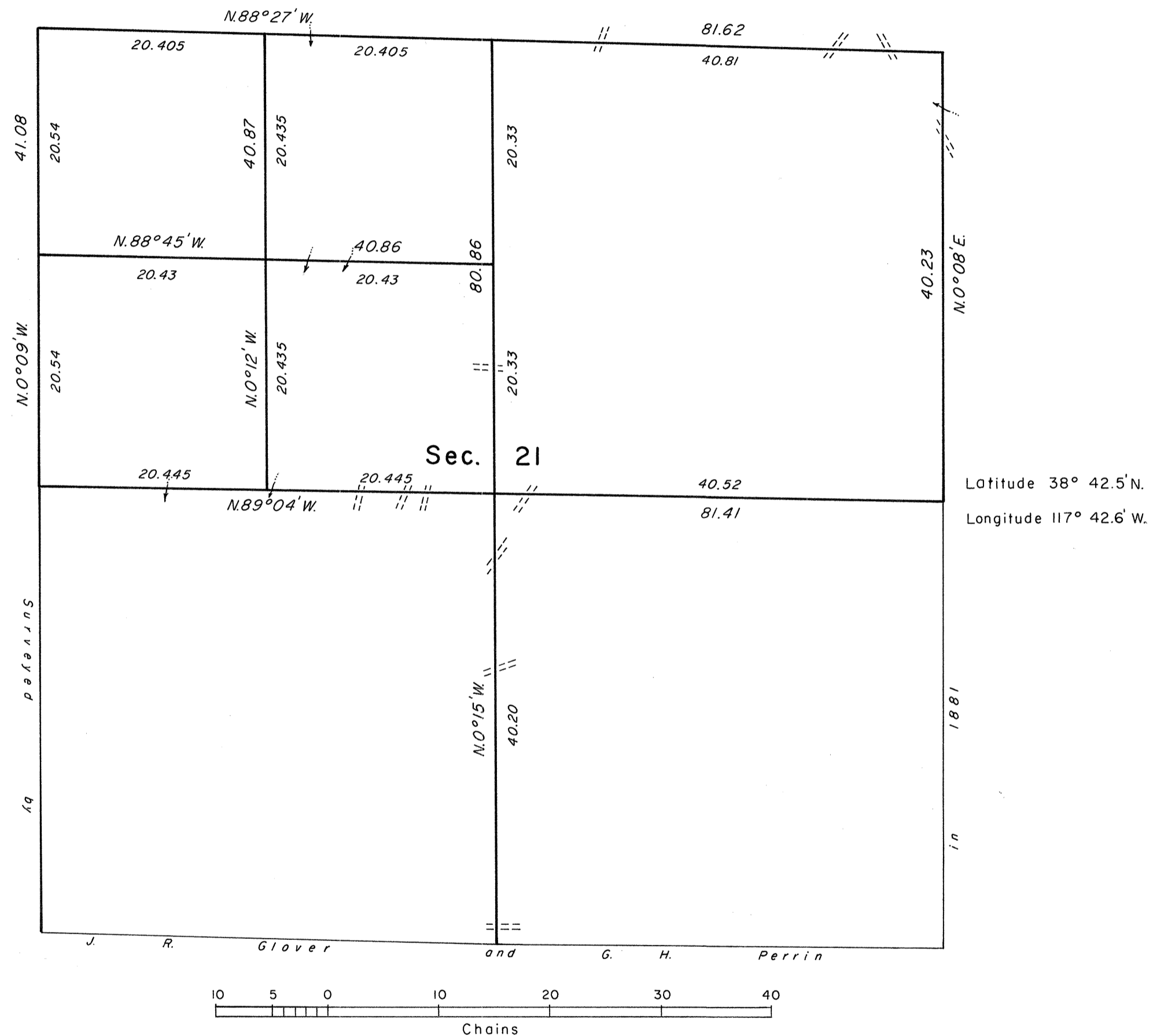
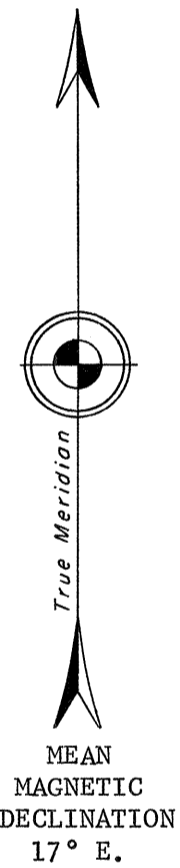
DEPENDENT RESURVEY AND SUBDIVISION

A history of surveys is contained in the field notes.

This plat represents the dependent resurvey of a portion of the subdivisional lines, designed to restore the corners in their true original locations according to the best available evidence, and the subdivision of section 21, T. 10 N., R. 38 E., Mount Diablo Meridian, Nevada.

The areas are as shown on the plat approved April 6, 1881.

Survey executed by Stephen D. Hardin, Cadastral Surveyor, beginning November 1, 1976, and completed November 12, 1976, pursuant to Special Instructions dated June 18, 1975, and Supplemental Special Instructions dated October 9, 1975, for Group No. 528, Nevada.



UNITED STATES DEPARTMENT OF THE INTERIOR
BUREAU OF LAND MANAGEMENT
Denver, Colorado December 30, 1980

This plat is strictly conformable to the approved field notes, and the survey, having been correctly executed in accordance with the requirements of law and the regulations of this Bureau, is hereby accepted.

For the Director

Chief, Cadastral Survey
Examination and Approval Staff