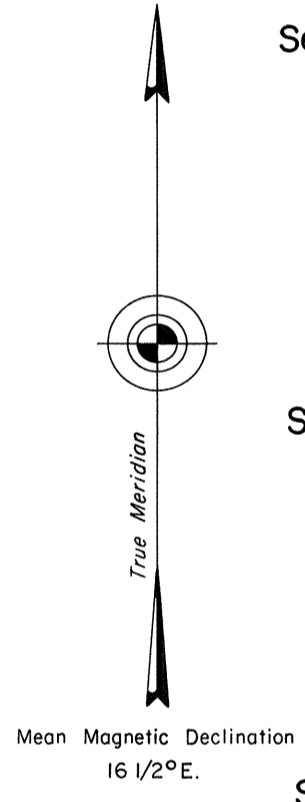
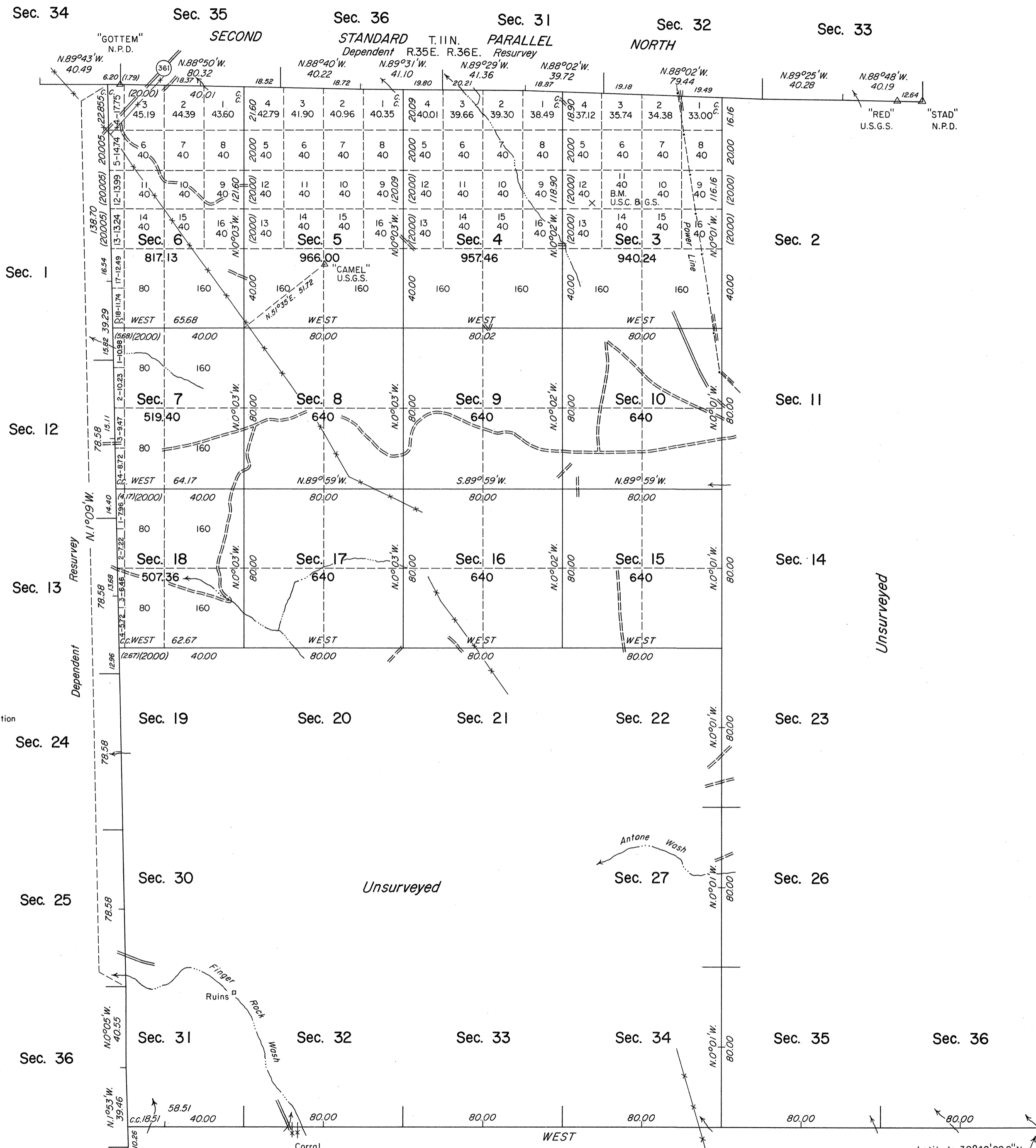


TOWNSHIP 10 NORTH, RANGE 36 EAST, OF THE MOUNT DIABLO MERIDIAN, NEVADA



A history of surveys is contained in the field notes.

A survey of the south boundary was executed concurrently under T. 9 N., R. 36 E., of this same Group.

This plat represents a dependent resurvey of the Second Standard Parallel North, through a portion of Ranges 35 and 36 East; and the dependent resurvey of the east boundary of T. 10 N., R. 35 E., designed to restore the corners in their original locations according to the best available evidence; and the survey of a portion of the subdivisional lines of T. 10 N., R. 36 E., Mount Diablo Meridian, Nevada.

Survey executed by Stephen R. Lambeth, Cadastral Surveyor, beginning October 9, 1984 and completed January 9, 1985, pursuant to Special Instructions dated September 19, 1984 and Supplemental Special Instructions dated October 16, 1984, for Group No. 618, Nevada.

UNITED STATES DEPARTMENT OF THE INTERIOR
BUREAU OF LAND MANAGEMENT

Reno, Nevada January 25, 1985

This plat is strictly conformable to the approved field notes, and the survey, having been correctly executed in accordance with the requirements of law and the regulations of this Bureau, is hereby accepted.

For the Director

Lacel E. Bland
Chief Cadastral Surveyor

Scale in Chains
Area Surveyed 8,547.59 Acres

Latitude 38°40'28.8"N.
Longitude 117°54'41.8"W.