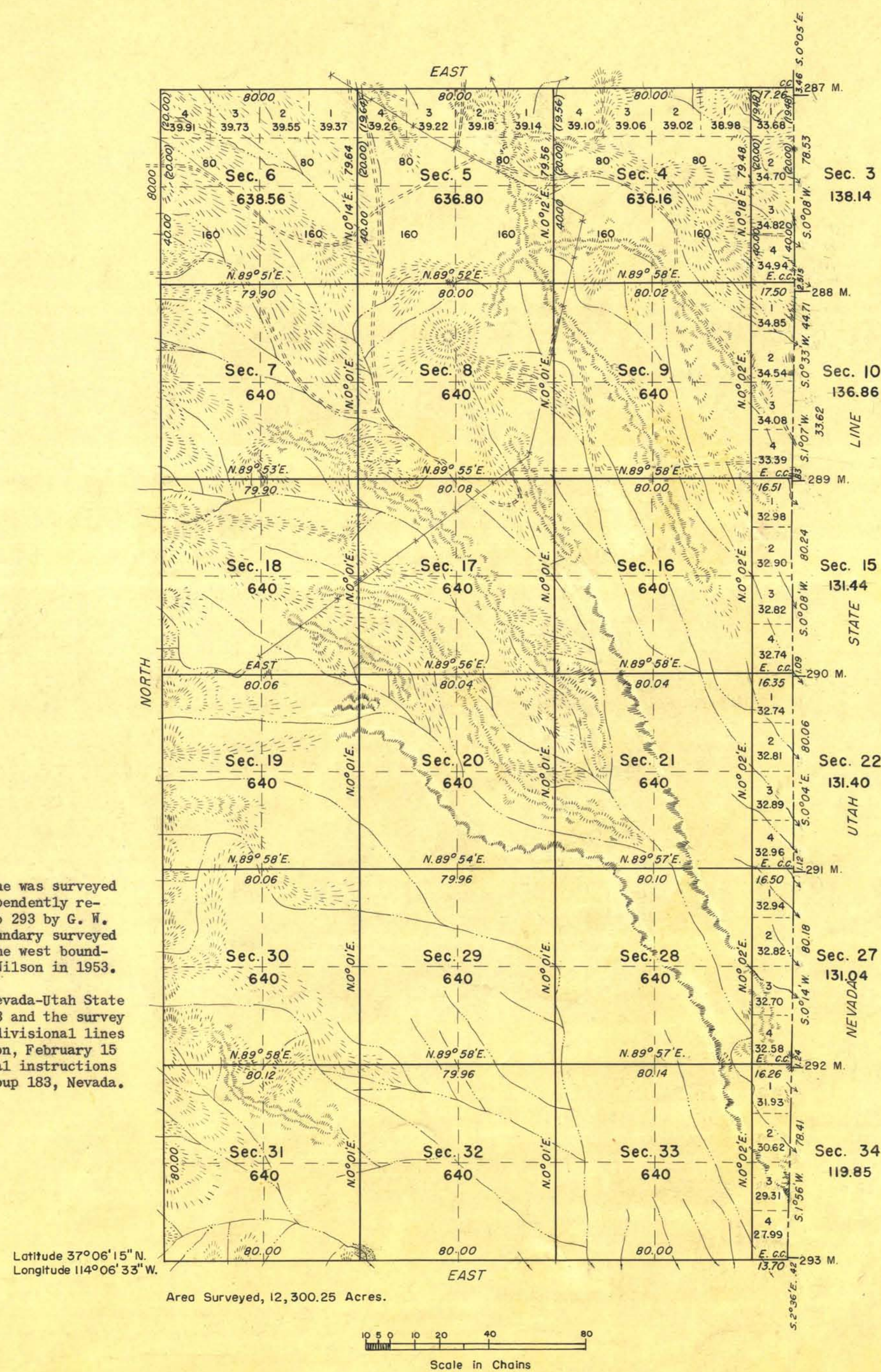


## TOWNSHIP 9 SOUTH, RANGE 71 EAST, OF THE MOUNT DIABLO MERIDIAN, NEVADA



The Nevada-Utah State line was surveyed by I. E. James in 1870 and dependently re-surveyed from mile post 286 to 293 by G. W. Ridgway in 1920; the south boundary surveyed by Roger F. Wilson in 1953; the west boundary was surveyed by Roger F. Wilson in 1953.

The retracement of the Nevada-Utah State line from mile post 286 to 293 and the survey of the north boundary and subdivisional lines was executed by Roger F. Wilson, February 15 to April 2, 1953, under special instructions dated January 11, 1934 for Group 183, Nevada.

Sec. 26 T. 41 S., R. 20 W.  
S. L. M., Utah

Sec. 35

Sec. 2

Sec. 11

T. 42 S., R. 20 W.  
S. L. M., Utah

Sec. 14

Sec. 23

UNITED STATES DEPARTMENT OF THE INTERIOR  
BUREAU OF LAND MANAGEMENT  
Washington, D.C. December 16, 1955

This plat is strictly conformable to the approved field notes, and the survey, having been correctly executed in accordance with the requirements of law and the regulations of this Bureau, is hereby accepted.

For the Director

*Earl S. Harrington*

Cadastral Engineering Staff Officer

RECEIVED  
LAND AND SURVEY OFFICE  
RENO, NEVADA  
MAY 23 1956  
7/8/9/10/11/12/13/14/15/16

3348-C

T. 9 S., R. 71 E.