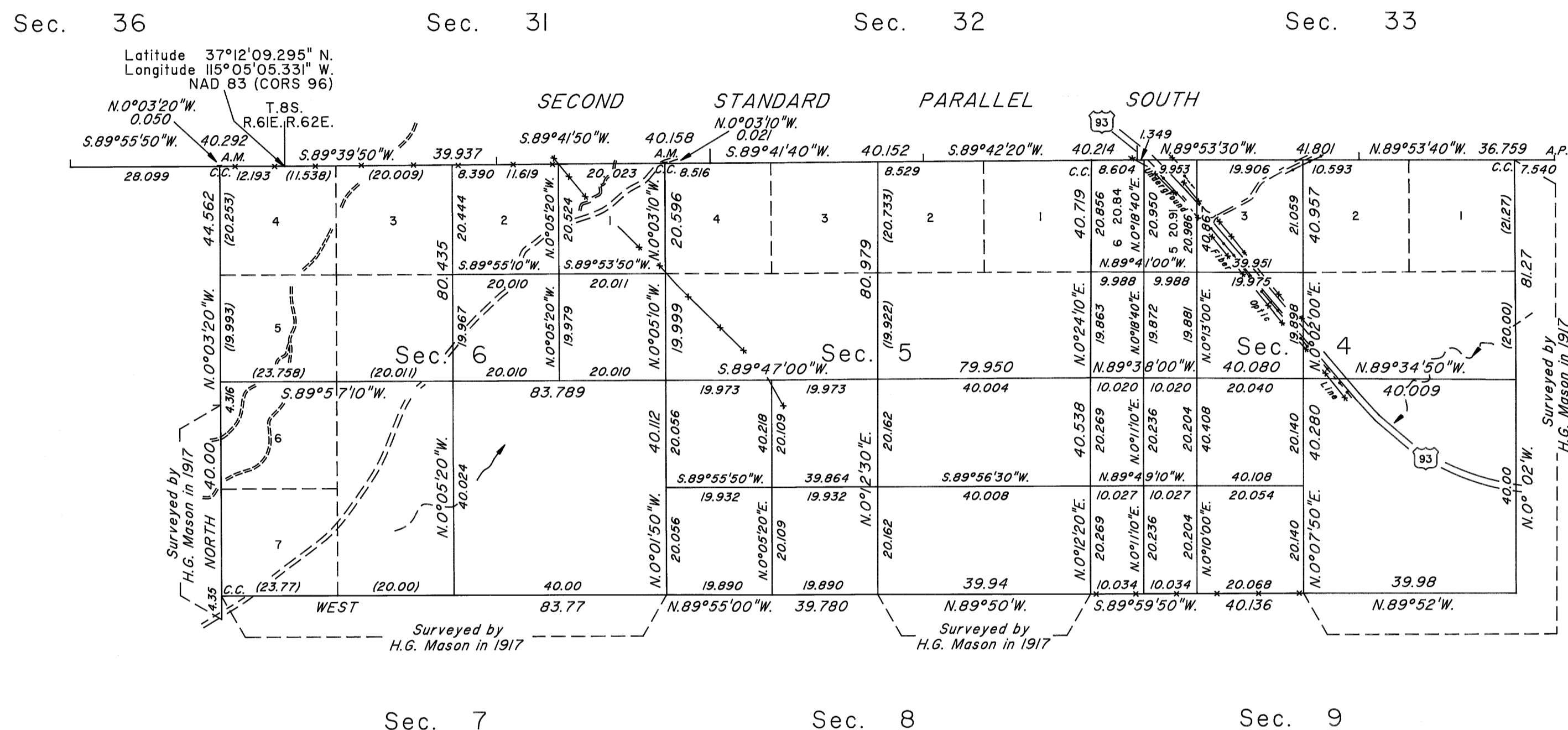
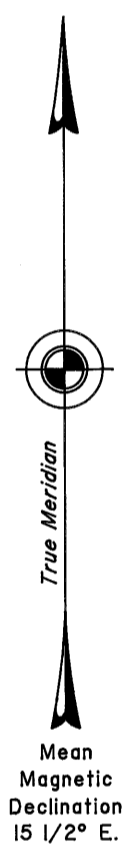


TOWNSHIP 9 SOUTH, RANGE 62 EAST, OF THE MOUNT DIABLO MERIDIAN, NEVADA
DEPENDENT RESURVEY AND SUBDIVISION



Surveyed by

H.G. Mason

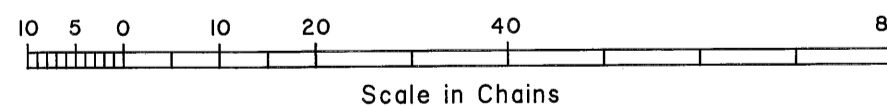
in 1917

A history of surveys is contained in the field notes.

This plat represents the dependent resurvey of the Second Standard Parallel South, through portions of Ranges 61 and 62 East; and a dependent resurvey of a portion of the east boundary of Township 9 South, Range 61 East; and the dependent resurvey of a portion of the subdivisional lines designed to restore the corners to their true original location according to the best available evidence, and the subdivision of sections 4, 5 and 6, Township 9 South, Range 62 East, Mount Diablo Meridian, Nevada.

Except as indicated hereon, the lottings and areas are as shown on the plat approved April 25, 1918.

Survey executed by Don R. Aschenbach, Cadastral Surveyor, beginning July 9, 2009, and completed January 10, 2010, pursuant to Special Instructions dated June 29, 2009, and Supplemental Special Instructions dated November 20, 2009, for Group No. 877, Nevada.



UNITED STATES DEPARTMENT OF THE INTERIOR
BUREAU OF LAND MANAGEMENT

Reno, Nevada January 6, 2011

This plat is strictly conformable to the approved field notes, and the survey, having been correctly executed in accordance with the requirements of law and the regulations of this Bureau, is hereby accepted.

For the Director

Chief Cadastral Surveyor, Nevada