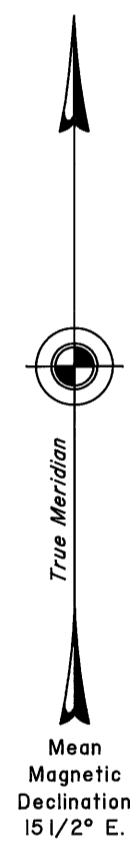


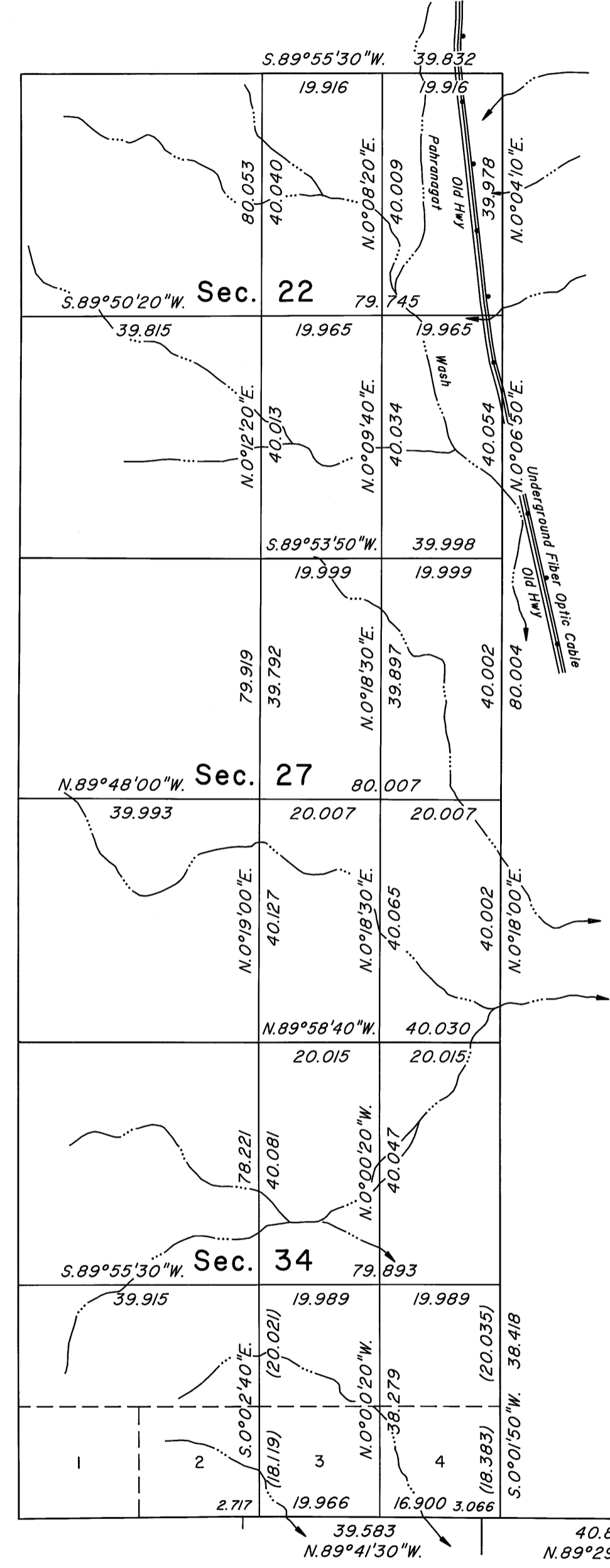
# TOWNSHIP 9 SOUTH, RANGE 62 EAST, OF THE MOUNT DIABLO MERIDIAN, NEVADA

## DEPENDENT RESURVEY AND SUBDIVISION



Surveyed by  
*H. G. Mason and E. R. Bunbury*  
in 1916-17

Surveyed by  
*H. G. Mason and E. R. Bunbury*  
in 1916-17



A history of surveys is contained in the field notes.

This plat represents the dependent resurvey of a portion of the north boundary of Township 10 South, Range 62 East; and the dependent resurvey of a portion of the subdivisional lines designed to restore the corners in their true original locations according to the best available evidence, and the subdivision of sections 22, 27 and 34, Township 9 South, Range 62 East, Mount Diablo Meridian, Nevada.

Except as indicated hereon, the lottings and areas are as shown on the plat approved April 25, 1918.

For those surveyed lines not showing bearings and distances, refer to the official record of 1918.

Survey executed by Don R. Aschenbach, Cadastral Surveyor, beginning July 15, 2005, and completed November 16, 2007, pursuant to Special Instructions dated July 12, 2005, for Group No. 828, Nevada.

UNITED STATES DEPARTMENT OF THE INTERIOR  
BUREAU OF LAND MANAGEMENT  
Reno, Nevada      December 2, 2008

This plat is strictly conformable to the approved field notes, and the survey, having been correctly executed in accordance with the requirements of law and the regulations of this Bureau, is hereby accepted.

For the Director  
*David A. Moran*

Chief Cadastral Surveyor, Nevada

Latitude 37° 06' 56.418" N.  
Longitude 115° 00' 21.072" W.  
NAD 83 (CORS 96)

