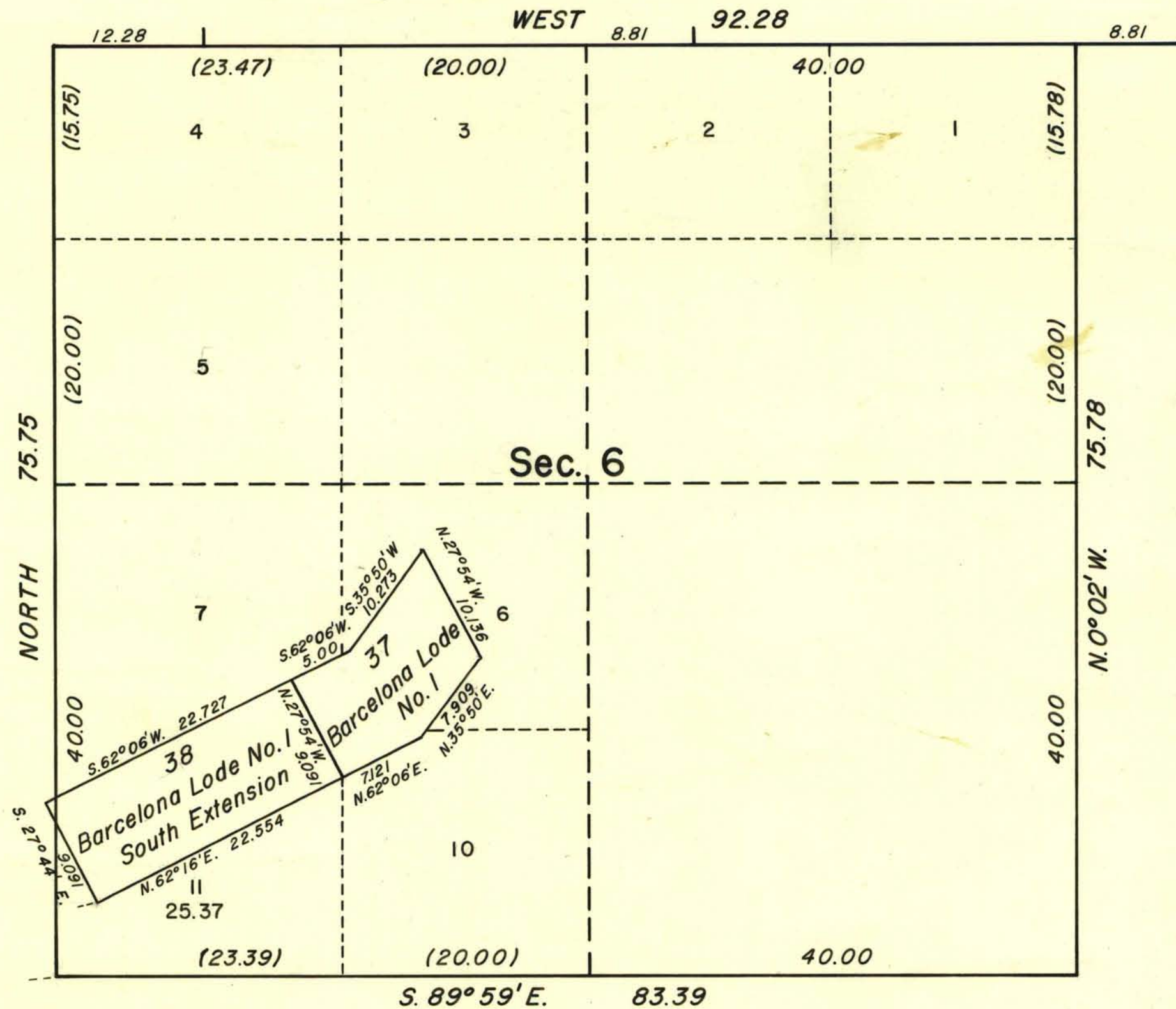


TOWNSHIP 9 NORTH, RANGE 45 EAST, MOUNT DIABLO MERIDIAN, NEVADA.

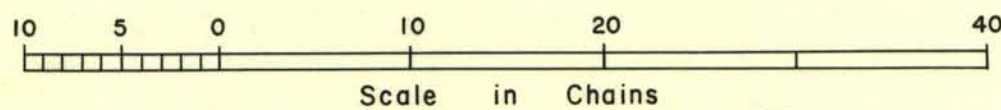
SUPPLEMENTAL PLAT



This plat showing an amended lotting created by the elimination of the unpatented Sentinel No. 3 lode, M. S. No. 4696, is based upon plat accepted April 6, 1954, to which reference will be made for areas not shown hereon.

The position of M. S. No. 38 is based upon the connections to U. S. L. M. 318 and partial retracement of M. S. No. 38 recorded in M. S. No. 4696, to which reference should be made for details.

U.S.L.M. No. 318  
 S. 77° 16' W. 44.54  
 (Calculated from M.S. No. 4696)  
 S. 84° 24' W. 40.20



UNITED STATES DEPARTMENT OF THE INTERIOR  
 BUREAU OF LAND MANAGEMENT  
 Washington, D. C. January 18, 1957

This plat showing amended lottings, having been correctly prepared in accordance with the regulations, is hereby accepted.

For the Director

*Earl G. Harrington*

Cadastral Engineering Staff Officer