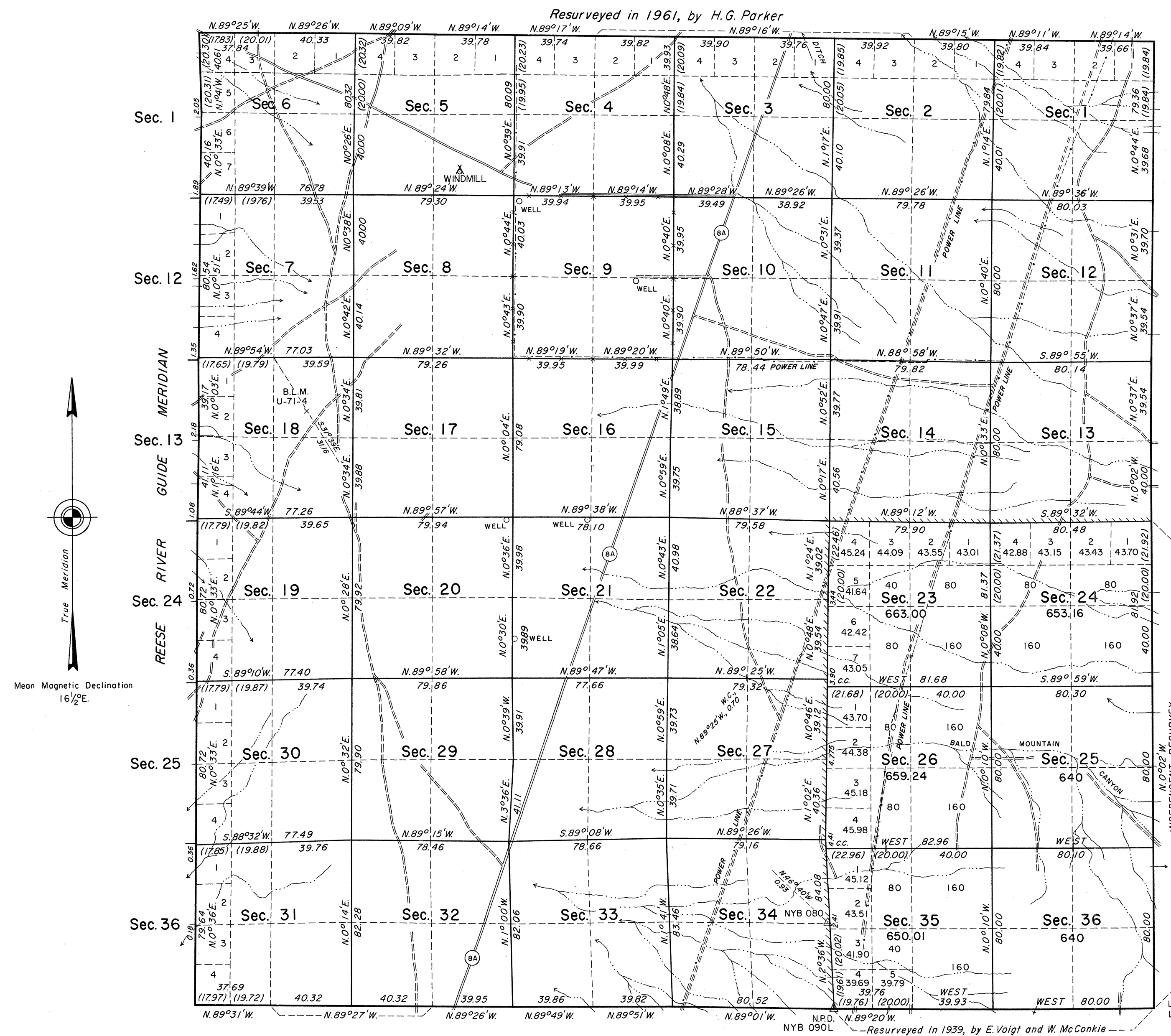


# TOWNSHIP 9 NORTH, RANGE 43 EAST, OF THE MOUNT DIABLO MERIDIAN, NEVADA

## DEPENDENT RESURVEY AND COMPLETION SURVEY

OFFICIALLY FILED  
NEVADA LAND OFFICE  
10:00 AM Dec 16, 1968



A history of the earlier surveys is contained in the field notes.

This plat represents the dependent resurvey of the west boundary, portions of the south and east boundaries and subdivisional lines; the independent resurvey of a portion of the east boundary; and, the survey of a portion of the subdivisional lines, completing the subdivision of T. 9 N., R. 43 E. The resurvey was designed to restore the corners in their true original locations according to the best available evidence.

Lottings and areas (except as indicated hereon) are as shown on the plat approved October 13, 1873.

This survey was executed by James R. Munson, Cadastral Surveyor, June 2, 1966, to July 6, 1966, under Special Instructions dated May 20, 1966, for Group No. 438, Nevada.

UNITED STATES DEPARTMENT OF THE INTERIOR  
BUREAU OF LAND MANAGEMENT  
Washington, D. C. September 27, 1968

This plat is strictly conformable to the approved field notes, and the survey, having been correctly executed in accordance with the requirements of law and the regulations of this Bureau, is hereby accepted.

For the Director

*R.E. Brown*

Chief, Division of Engineering

T 9 N. R 43 E.