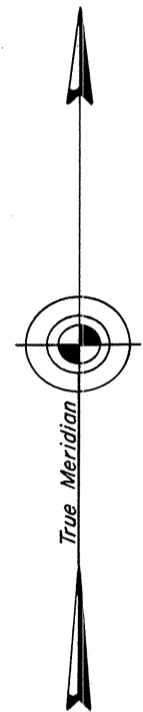
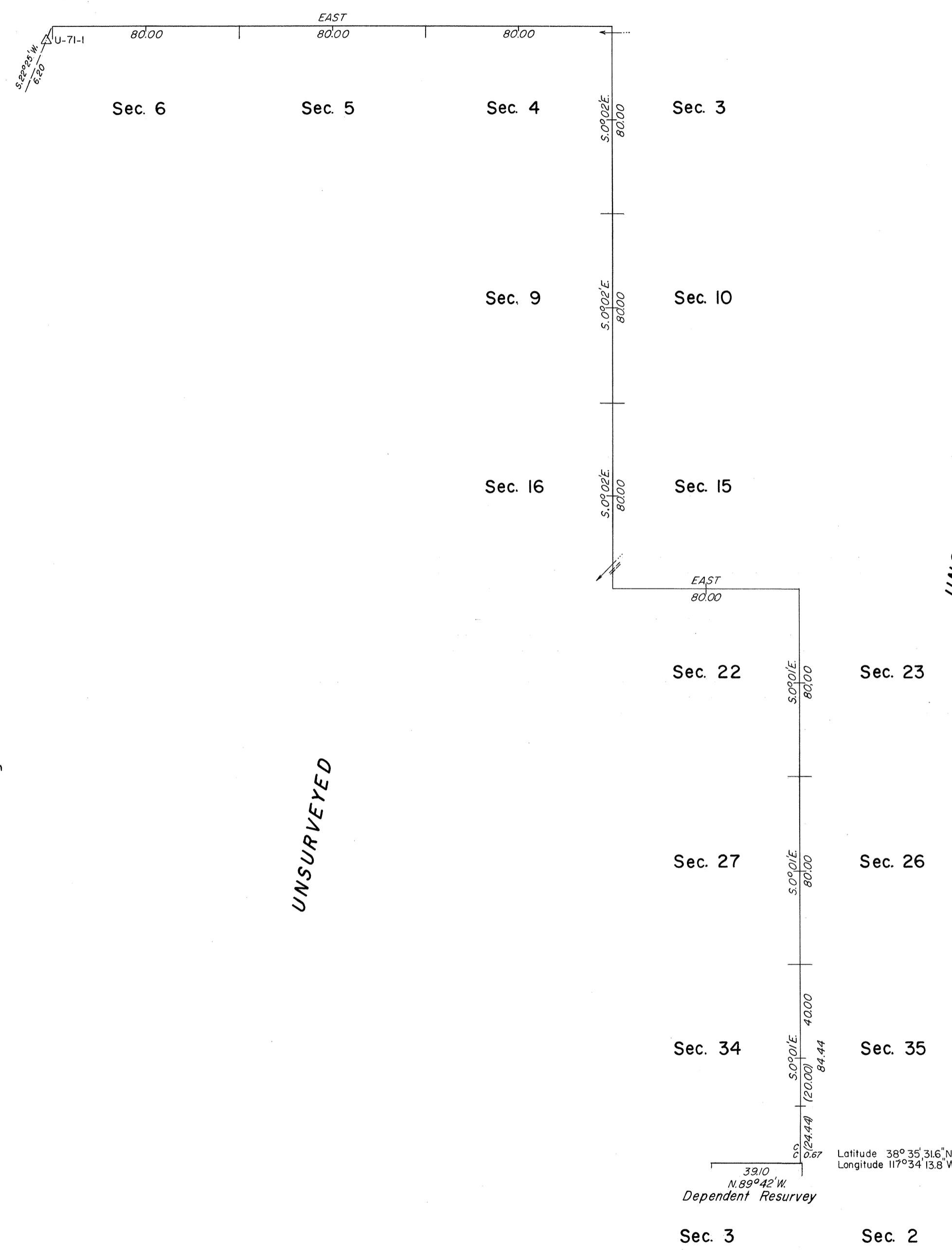


TOWNSHIP 9 NORTH, RANGE 39 EAST, OF THE MOUNT DIABLO MERIDIAN, NEVADA



Mean Magnetic Declination
17° E.

UNSURVEYED

UNSURVEYED

A history of surveys is contained in the field notes.

A dependent resurvey of a portion of the south boundary was executed concurrently under T. 8 N., R. 39 E., of this same group.

This plat represents a survey of a portion of the north boundary and a portion of the subdivisional lines of T. 9 N., R. 39 E., Mount Diablo Meridian, Nevada.

Survey executed by Robert A. Pratt, Cadastral Surveyor, August 2 to October 6, 1977, under Special Instructions dated July 27, 1977, for Group No. 552, Nevada.

UNITED STATES DEPARTMENT OF THE INTERIOR
BUREAU OF LAND MANAGEMENT
Washington, D.C. April 26, 1978

This plat is strictly conformable to the approved field notes, and the survey, having been correctly executed in accordance with the requirements of law and the regulations of this Bureau, is hereby accepted.

For the Director

Bernard W. Hoopes
Chief, Division of Cadastral Survey

