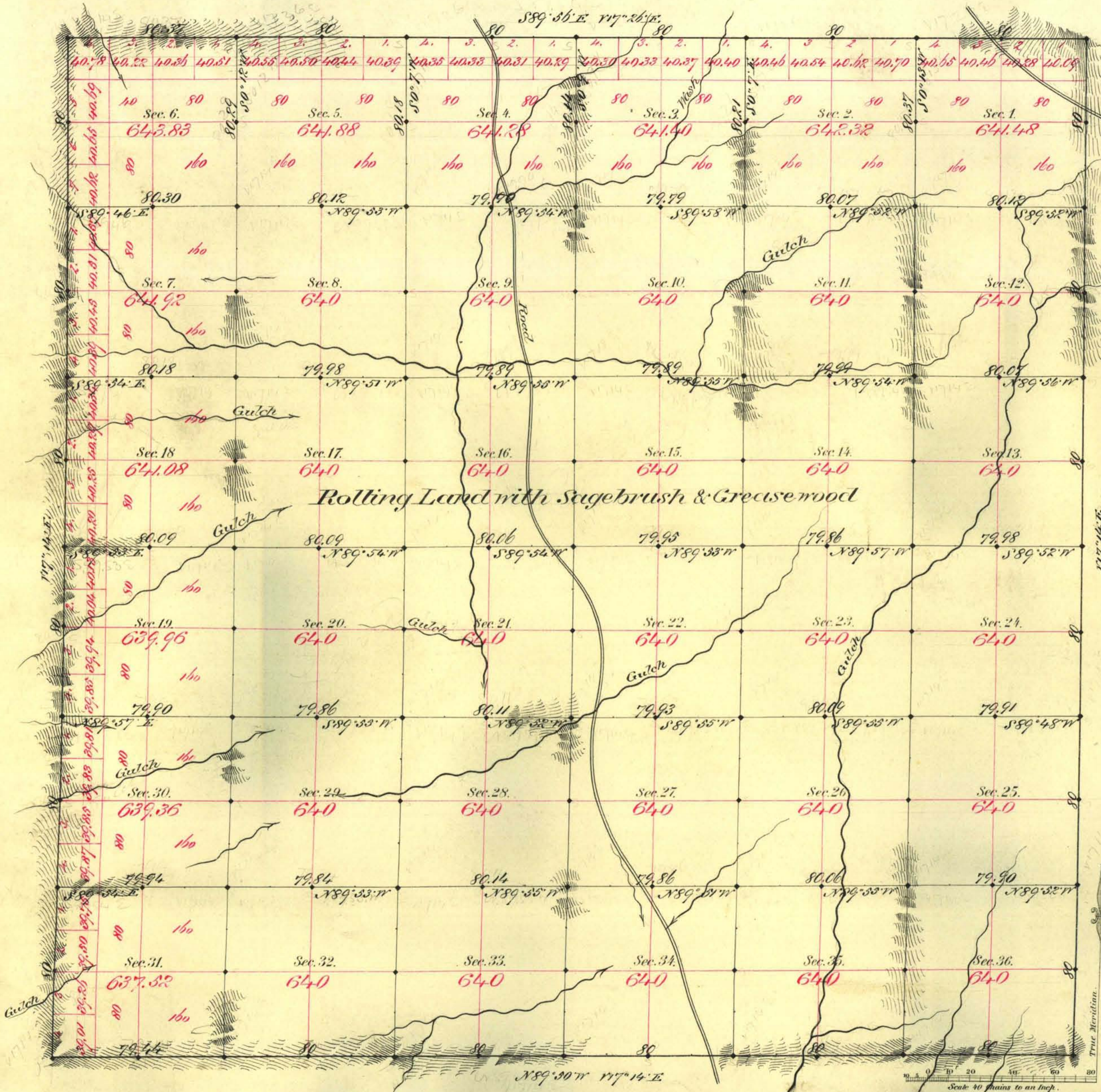


TOWNSHIP N^o 9 NORTH RANGE N^o 38 EAST MOUNT DIABLO MERIDIAN



Aggregate Area of Public Land Surveyed 23,052.03 Ac.

Commenced March 12th 1881
Completed " 18th "

Subdivisions not noted run with a Variation of 1/4" East

Survey Designated	By Whom Surveyed	Date of Contract	Amount of Survey	When Surveyed
J. Day	Henry Quinn	Nov. 15 th 1880	15-09-15	1880
J. E. & W. Day	"	" 22 nd "	18-09-22	1880
Subdivisions	"	" "	30-01-05	March "

79 Cor.
102
10

The above Map of Township N^o 9 North of Range N^o 38 East of Mount Diablo Meridian is strictly conformable to the field notes of the survey thereof on file in this Office, which have been examined and approved.

Surveyor General's Office,
Virginia City Nev.
April 6th 1881

C. S. Davis
Sur. Gen. Nev.