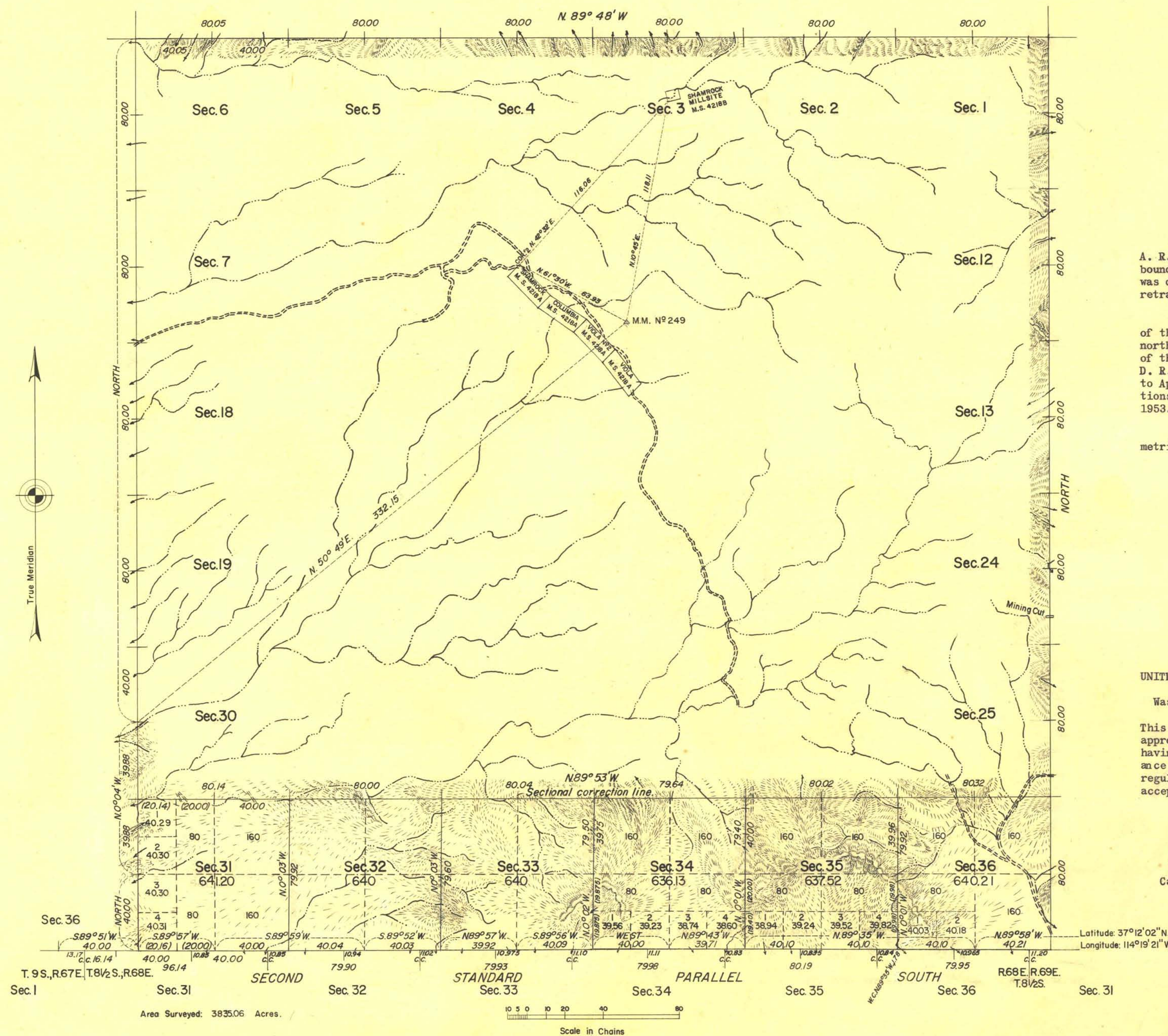


ORIGINAL

# TOWNSHIP 8 SOUTH, RANGE 68 EAST, OF THE MOUNT DIABLO MERIDIAN, NEVADA. SURVEY AND RESURVEY

RECEIVED  
LAND AND SURVEY OFFICE  
RENO, NEVADA  
MAY 28 1953  
718191011211213141516



The west boundary was surveyed by A. R. Talamantes in 1911; the south boundary (Second Standard Parallel South) was dependently resurveyed and a portion retraced by R. C. Yundt in 1934.

The dependent resurvey of a portion of the west boundary and survey of the north and east boundaries and a portion of the subdivisional lines executed by D. R. Averill and Roger F. Wilson, April 6 to April 24, 1953, under special instructions for Group 295, Nevada, dated March 5, 1953.

Drainage and roads taken from planimetric maps prepared from aerial photographs.

UNITED STATES DEPARTMENT OF THE INTERIOR  
BUREAU OF LAND MANAGEMENT  
Washington, D. C. February 15, 1956

This plat is strictly conformable to the approved field notes, and the survey, having been correctly executed in accordance with the requirements of law and the regulations of this Bureau, is hereby accepted.

For the Director

*Earl S. Harrington*

Cadastral Engineering Staff Officer

T 8 S., R. 68 E.