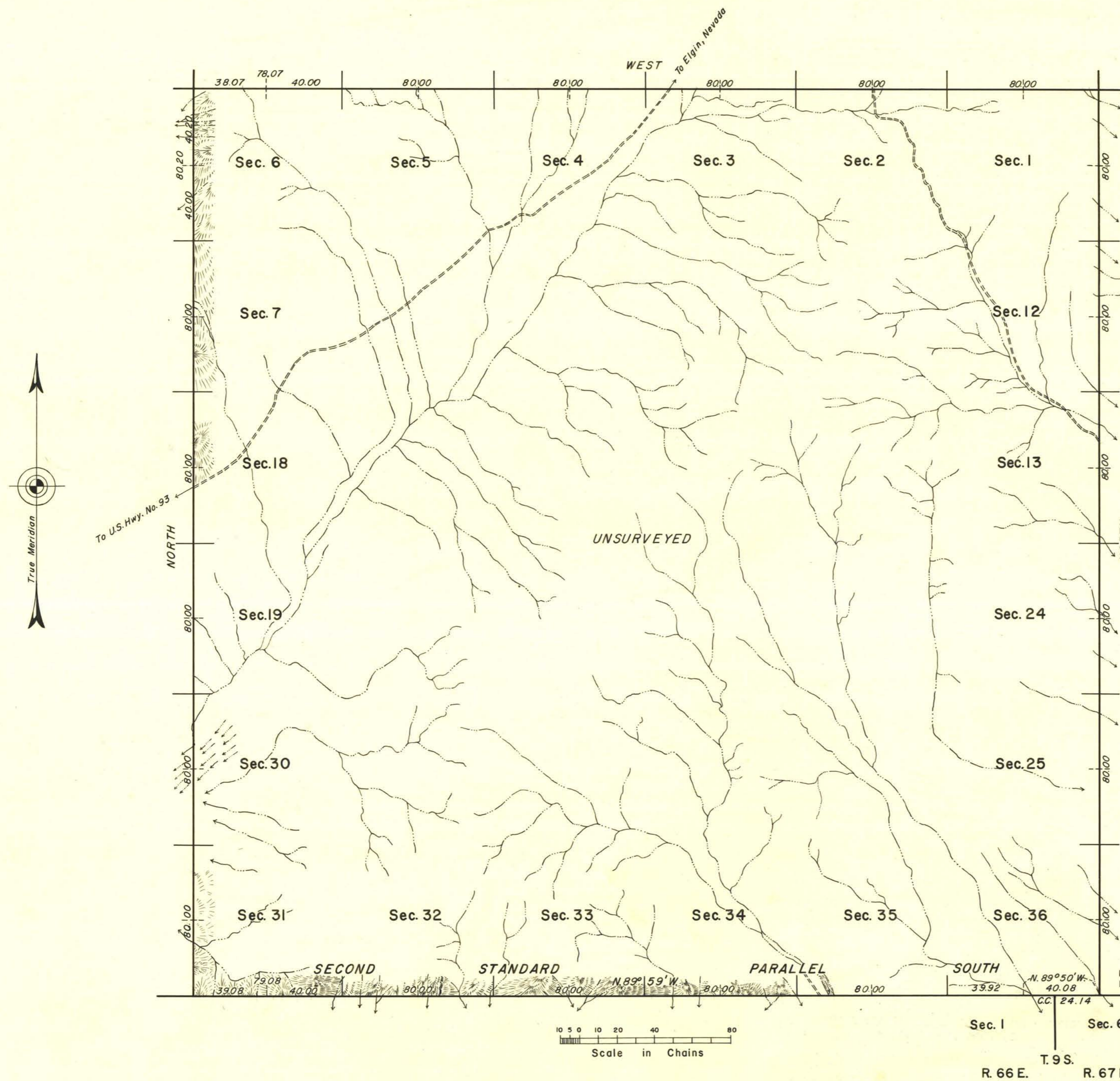


TOWNSHIP 8 SOUTH, RANGE 66 EAST, MOUNT DIABLO MERIDIAN, NEVADA



The south boundary (Second Standard Parallel South) and the east boundary were surveyed by A. R. Talamantes in 1911. The north boundary was surveyed by George W. Ridgeway in 1920.

The dependent resurvey of the east half mile and the independent resurvey of the west 5½ miles of the south boundary along the Second Standard Parallel South and survey of the west boundary of T. 8 S., R. 66 E., Mount Diablo Meridian, Nevada, executed by Dupree R. Averill and E. A. Taylor, November 10 to 25, 1952, under special instructions for Group 355, Nevada dated August 7, 1952.

UNITED STATES DEPARTMENT OF THE INTERIOR
BUREAU OF LAND MANAGEMENT
Washington, D. C. March 26, 1957

This plat is strictly conformable to the approved field notes, and the survey, having been correctly executed in accordance with the requirements of law and the regulations of this Bureau, is hereby accepted.

For the Director

Earl G. Harrington

Cadastral Engineering Staff Officer