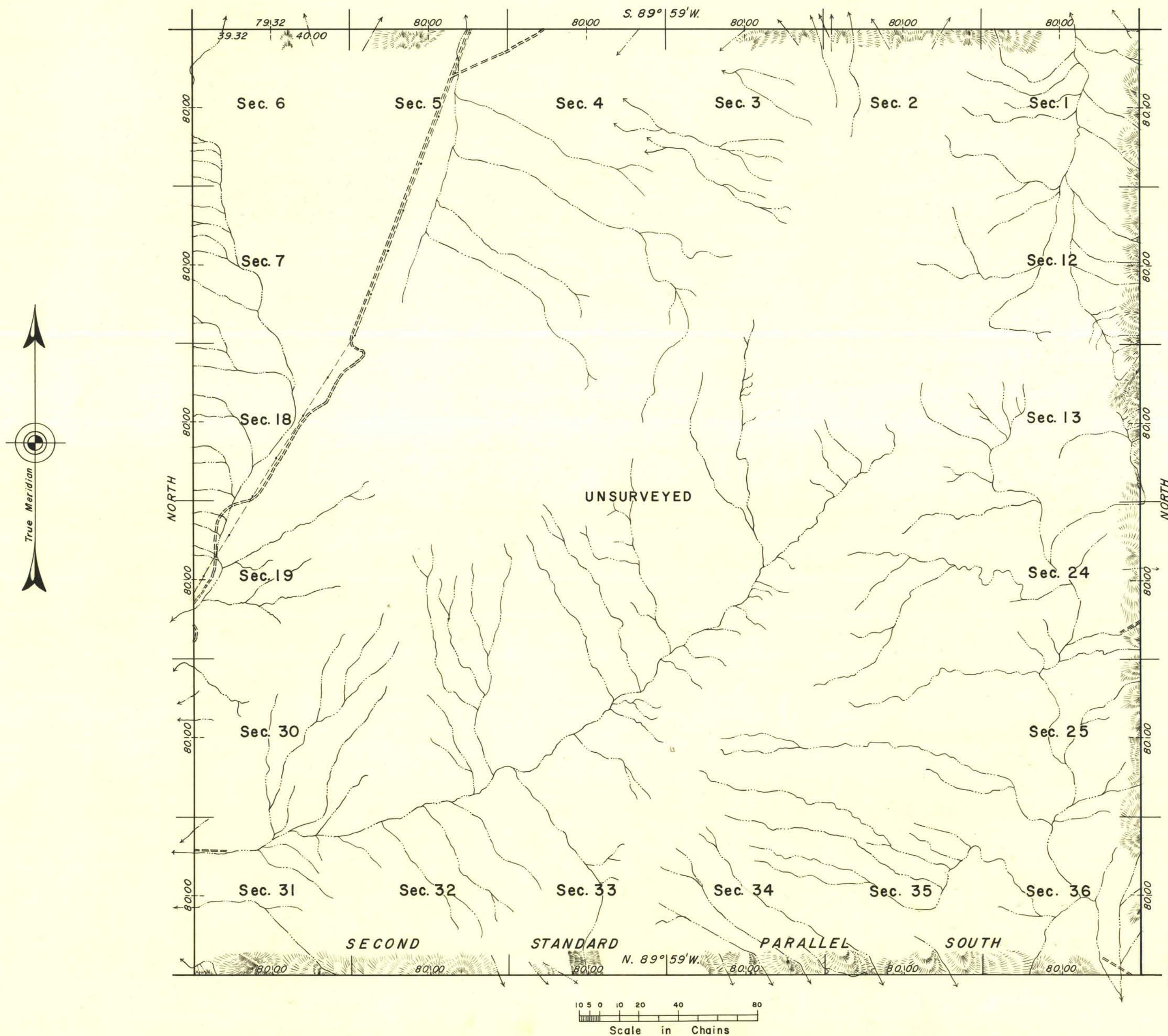


TOWNSHIP 8 SOUTH, RANGE 63 EAST, MOUNT DIABLO MERIDIAN, NEVADA  
INDEPENDENT RESURVEY AND SURVEY



The history of earlier surveys is contained in the field notes.

The independent resurvey of the south boundary and the survey of the east and north boundaries of T. 8 S., R. 63 E. executed by Dupree R. Averill and Chester A. Swiatek, November 10, 1952 to July 3, 1953, under special instructions for Group 355, Nevada, dated August 7, 1952.

UNITED STATES DEPARTMENT OF THE INTERIOR  
BUREAU OF LAND MANAGEMENT  
Washington, D. C. March 26, 1957

This plat is strictly conformable to the approved field notes, and the survey, having been correctly executed in accordance with the requirements of law and the regulations of this Bureau, is hereby accepted.

For the Director

*Earl G. Harrington*

Cadastral Engineering Staff Officer

Latitude 37° 12' 09.7" N.  
Longitude 114° 51' 57.3" W.