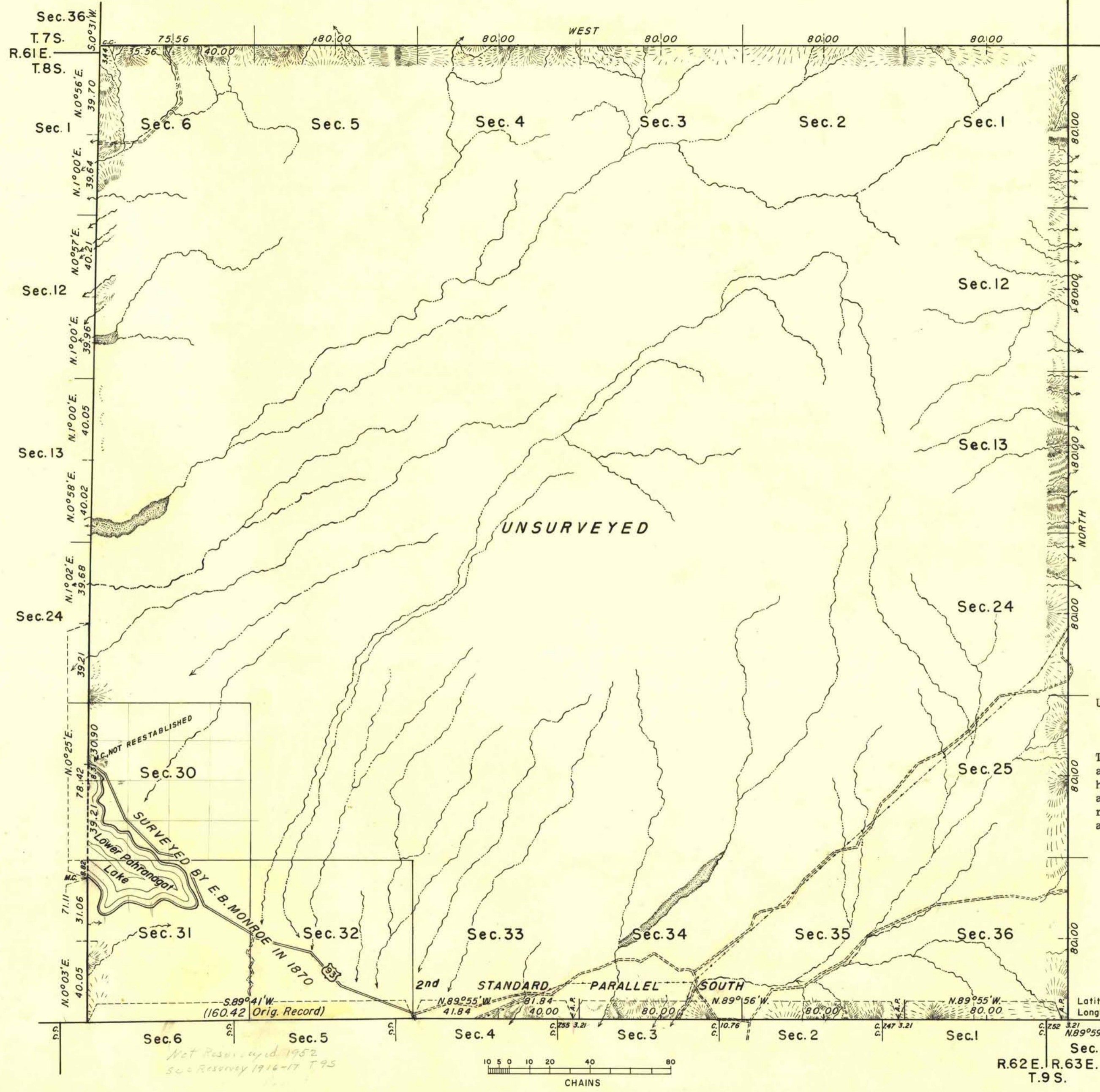


TOWNSHIP 8 SOUTH, RANGE 62 EAST, MOUNT DIABLO MERIDIAN, NEVADA.



History of earlier surveys is contained in the field notes.

This plat represents a dependent resurvey of the east boundary of T. 8 S., R. 61 E. designed to restore the corners in their original locations according to the best available evidence, the independent resurvey of a portion of the south boundary (Second Standard Parallel South) and the survey of the east and north boundaries of T. 8 S., R. 62 E., Mt. Diablo Meridian, Nevada.

Survey executed by Dupree R. Averill and E. A. Taylor, December 3 to 19, 1952, under special instructions dated August 7, 1952 for Group 355, Nevada.

UNITED STATES DEPARTMENT OF THE INTERIOR
BUREAU OF LAND MANAGEMENT
Washington, D. C. March 26, 1957

This plat is strictly conformable to the approved field notes, and the survey, having been correctly executed in accordance with the requirements of law and the regulations of this Bureau, is hereby accepted.

For the Director
Earl S. Harrington
Cadastral Engineering Staff Officer

Latitude 37°12'09.8"N.
Longitude 114°58'28.8"W.

R.62E. R.63E.
T.9S.

