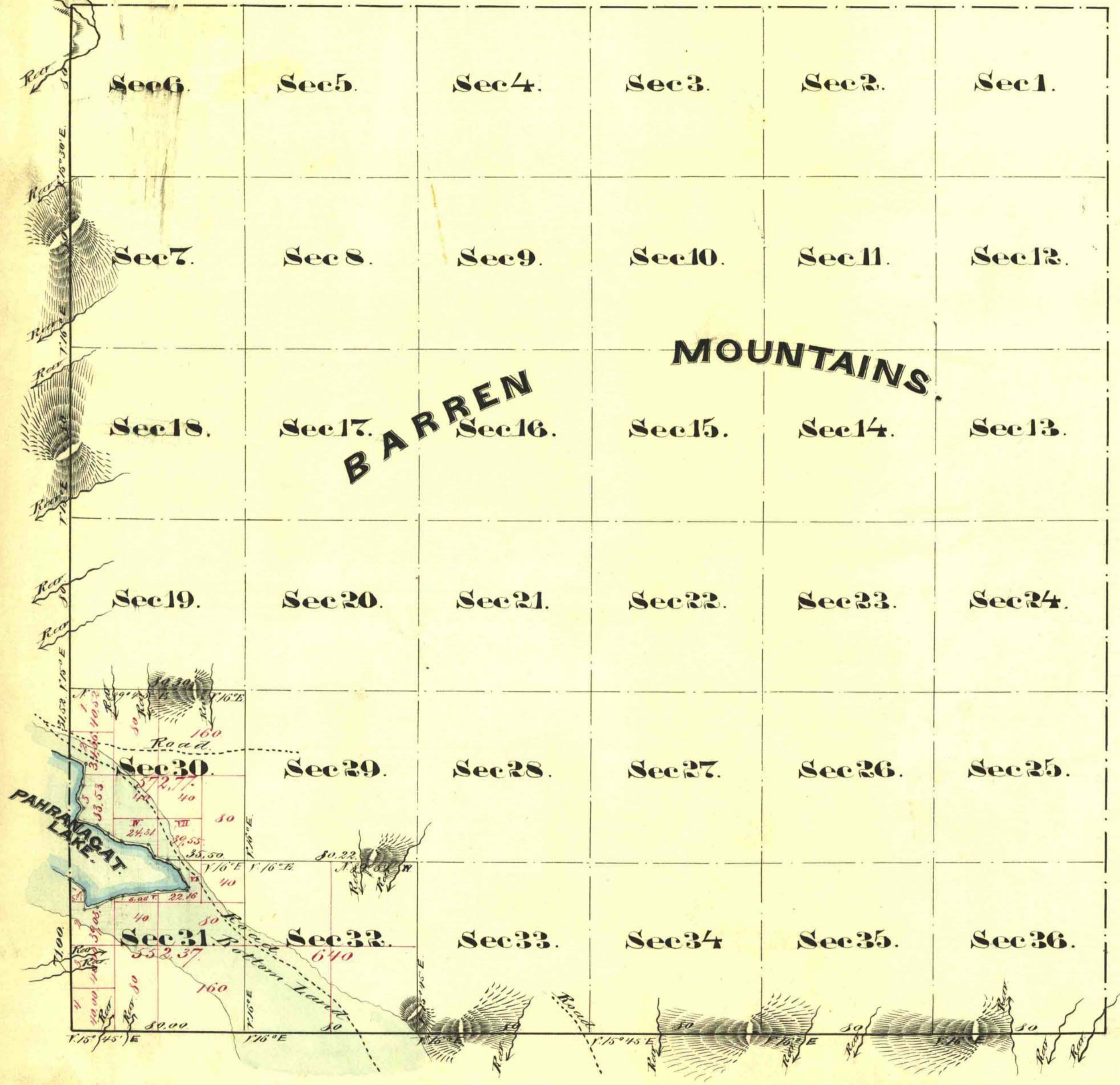


Township N^o 8 South. Range N^o 62 East. Mount Diablo Meridian.



Meanders of Pahranagat Lake.

Beginning 31.52 chs south of corner to sec^s 29, 30, 25 & 24 on W. Bdr^s of T.N. 8 S., R.N. 62 E., thence:

St ^c	Cours.	Distance	St ^c	Cours.	Distance
30.	S. 63 1/2° E	3.00 chs	30	S. 72° E	4.67 chs
"	S. 5 1/2° W	11.00 "	31	S. 54 1/2° "	7.00 "
"	S. 21 1/2° "	6.00 "	"	S. 26 1/2° "	9.00 "
"	S. 36 3/4° E	5.00 "	"	S. 6° W	2.00 "
"	S. 30 1/4° W	6.50 "	"	S. 34 3/4° "	30.00 "
"	S. 76° E	4.50 "	"	S. 74° "	5.00 "
"	S. 44 1/2° "	6.50 "	"	S. 59° "	6.10 "
"	S. 60° "	7.00 "	"	S. 39 1/4° "	5.50 "
"	S. 31 1/2° "	13.00 "	"	N. 10 1/2° "	3.30 "
"	S. 31° "	6.50 "	"	S. 30° W	7.50 "
		79.00			36.03
		16.03			2 miles 05 chs 03 lbs
		163.03 chs			

Aggregate Area of Public Land (surv^d) 1765.14 Acres
 Estimated - Barren Mt (unsurv^d) 21,120.00
 Pahranagat Lake 157.26
 Aggregate 23,042.40 Acres

Commenced Aug. 20th 1870
 Completed

The above Map of Township N^o 8 South, Range N^o 62 East, Mount Diablo Meridian is strictly conformable to the field notes of the surveys thereof on file in this Office which have been examined and approved.
 U.S. Surveyor General's Office
 Virginia City Nevada
 October 26th 1870.

E. S. Davis
 U.S. Surveyor Gen'l Nevada

Surveyors Designated.	By whom surveyed.	Date of Contract.	Amount of Survey m ^{ts} - chs - lbs	When surveyed	It ^h Cont.
W. Bdr of Township	E. B. Monroe	Dec 12 th 1859	5 - 22 - 50	1870	34
Rest of Township lines	E. B. Monroe	Oct 1 st 1859	6 - 00 - 00	1859	31
Subdivision lines		Aug 13 th 1870	5 - 36 - 02	Aug: 1870	35
Meaders			2 - 05 - 03		"