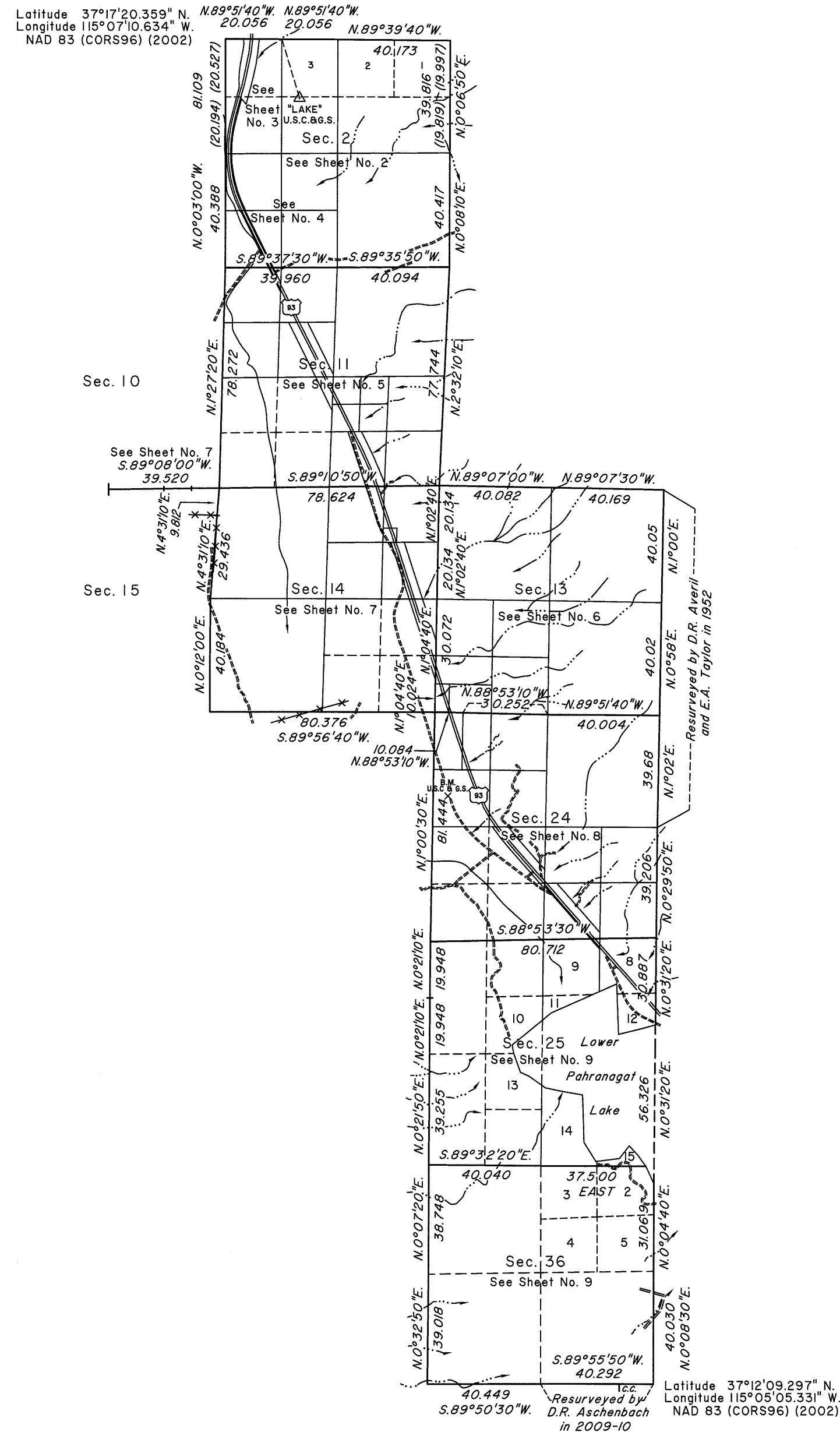


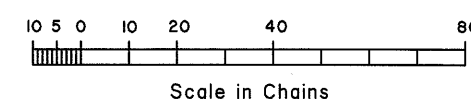
TOWNSHIP 8 SOUTH, RANGE 61 EAST, OF THE MOUNT DIABLO MERIDIAN, NEVADA

DEPENDENT RESURVEY, SUBDIVISION AND METES-AND-BOUNDS SURVEY



SECOND STANDARD PARALLEL SOUTH

TOTAL AREA OF FEDERAL INTEREST LAND RESURVEYED = 4,186.22 ACRES



A history of surveys is contained in the field notes.

A dependent resurvey of a portion of the north boundary was executed concurrently under T. 7 S., R. 61 E., of this same Group.

This plat, in nine sheets, represents the dependent resurvey of the Second Standard Parallel South, through a portion of Range 61 East, a portion of the east boundary, a portion of the subdivisional lines and a portion of the meanders of Lower Pahrnagat Lake designed to restore the corners in their true original locations according to the best available evidence, the subdivision of certain sections and the metes-and-bounds surveys of certain parcel boundaries through portions of sections 2, 11, 14, 24 and 25, Township 8 South, Range 61 East, Mount Diablo Meridian, Nevada.

Certain lottings in sections 2, 11, 24 and 25 represent precisely the same lands described in the deeds of aquired lands referenced in the field notes.

Except as indicated hereon, the lottings and areas are as shown on the plat approved April 20, 1870.

Survey executed by Kane M. Hellebust, Cadastral Surveyor, beginning on April 17, 2010, and completed October 5, 2011, pursuant to Special Instructions dated March 1, 2010, for Group No. 893, Nevada.

UNITED STATES DEPARTMENT OF THE INTERIOR
BUREAU OF LAND MANAGEMENT

Reno, Nevada March 2, 2012

This plat is strictly conformable to the approved field notes, and the survey, having been correctly executed in accordance with the requirements of law and the regulations of this Bureau, is hereby accepted.

For the Director

David D. Moran

Chief Cadastral Surveyor for Nevada