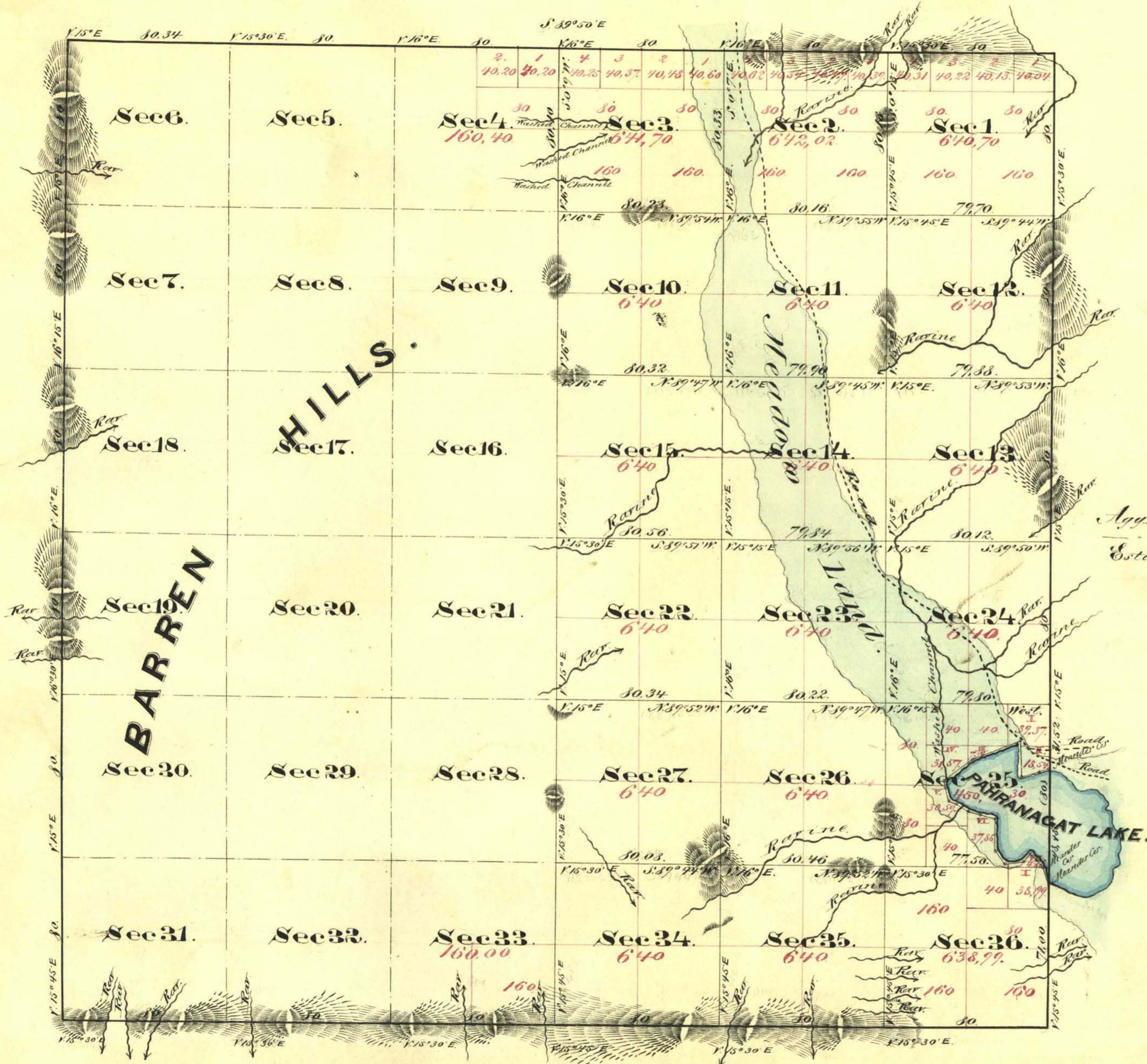


Township N<sup>o</sup> 8 South.

Range N<sup>o</sup> 6 East.

Mount Diablo Meridian.



**Meanders of Pahranagat Lake.**

Commencing on the East Boundary of the Township  
31.52 chs south of cor to sec 19, 24, 25, 30 - thence.

Points	Courses	Distances	Points	Courses	Distances
Sec 25	S 74 1/2° W	4.60	Sec 25	S 75 1/2° E	6.00
"	76 1/2°	9.00	"	30 1/2°	7.50
"	S 29° W	13.00	"	1 1/4°	16.70
"	S 66 1/2°	25.50	"	32 3/4°	3.00
"	51°	15.00	"	N 32 1/4°	3.50
"	11 1/2° E	3.00	"	37 1/4°	5.70
"	15 3/4°	7.00	"	S 48°	4.60
"	66 1/2°	3.50	"	36 3/4°	4.70
"	55°	7.00	"	36°	2.47
		<u>95.60 chs.</u>			<u>71.17 chs.</u>
		<u>166.77 chs.</u>			<u>2 miles 06 chs 77 lbs.</u>

Aggregate Area of Public Land (Surveyed) 11,654.11 Acres.  
 Pahranagat Lake. 190.01  
 Estimated -- Barren Hills (Unsurveyed) 11,208.56  
Aggregate 23,052.68 Acres.

Commenced January 6<sup>th</sup> 1870.  
 Completed 10<sup>th</sup>

Surveys Designated	By whom surveyed	Date of Contract	Amount of Surveys m <sup>s</sup> - ch <sup>s</sup> - lbs.	When surveyed	7 <sup>th</sup> Cor.
South Rd <sup>s</sup> of Township lines	E. B. Monroe.	October 1 <sup>st</sup> 1859	6 - 00 - 00	1859	31
Rest of do		December 12 <sup>th</sup> 1859	18 - 00 - 34	1870	34
Subdivision lines			32 - 79 - 77	January 1870	"
Meander do			2 - 06 - 77		"

The above Map of Township N<sup>o</sup> 8 South, Range N<sup>o</sup> 6 East, Mount Diablo Meridian is strictly conformable to the field notes of the survey, these of on file in this office, which have been examined and approved.  
 U. S. Surveyor General's Office  
 Virginia City Nevada  
 April 20<sup>th</sup> 1870.

*E. S. Davis*

U. S. Surveyor General Nevada.