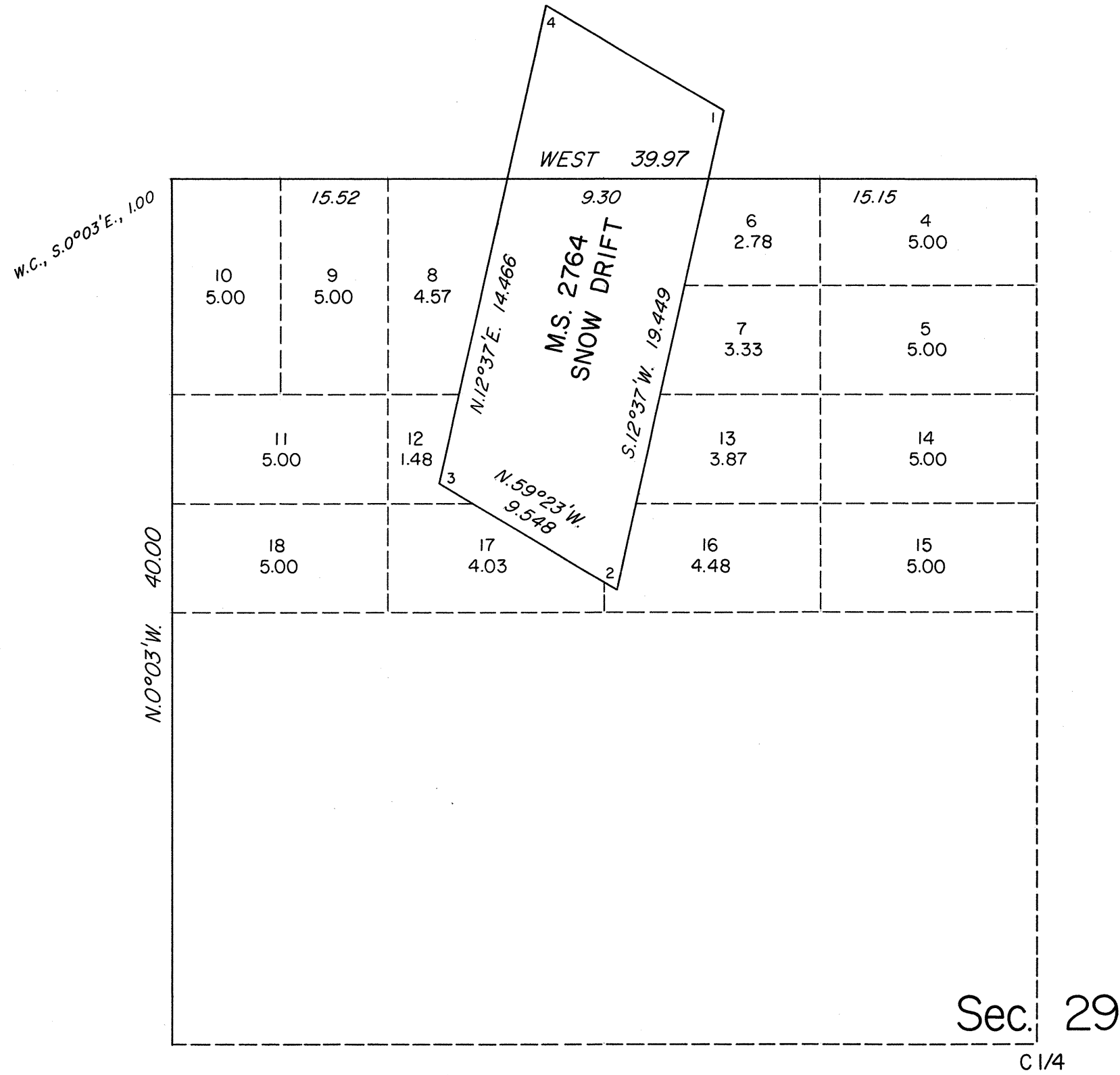
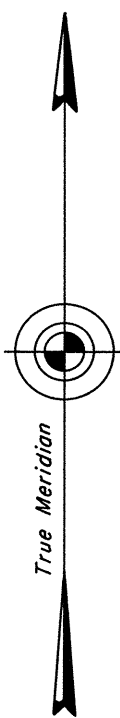


ORIGINAL

TOWNSHIP 8 NORTH, RANGE 44 EAST, OF THE MOUNT DIABLO MERIDIAN, NEVADA
SUPPLEMENTAL PLAT OF NW 1/4 SECTION 29



This plat, showing a subdivision of original lots 2 and 3, sec. 29, T. 8 N., R. 44 E., Mount Diablo Meridian, Nevada, is based upon the plats, in two sheets, approved April 10, 1957, and the mineral survey records.

UNITED STATES DEPARTMENT OF THE INTERIOR
BUREAU OF LAND MANAGEMENT

Reno, Nevada March 27, 1990

This plat, showing amended lottings, is based upon the official records and, having been correctly prepared in accordance with the regulations of this Bureau, is hereby accepted.

For the Director

Chief Cadastral Surveyor

