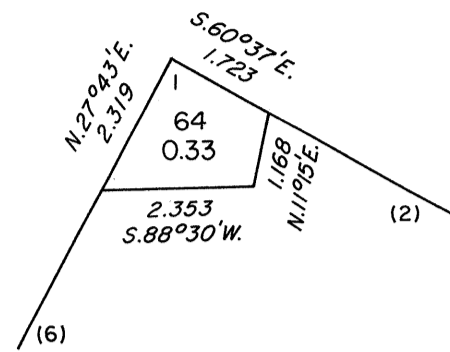


ORIGINAL

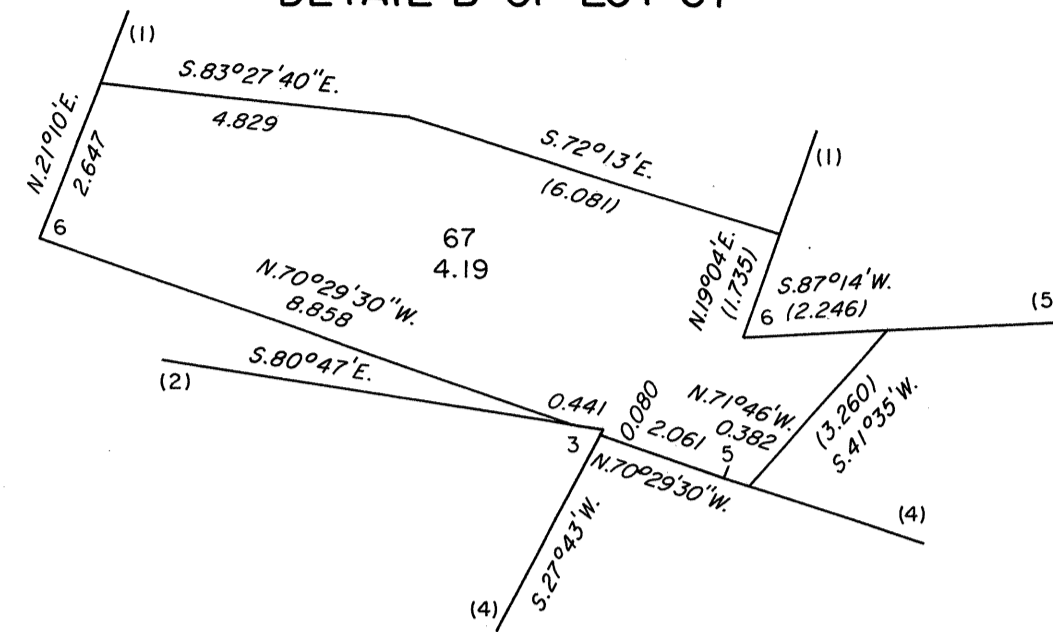
TOWNSHIP 8 NORTH, RANGE 44 EAST, OF THE MOUNT DIABLO MERIDIAN, NEVADA

DETAIL A OF LOT 64

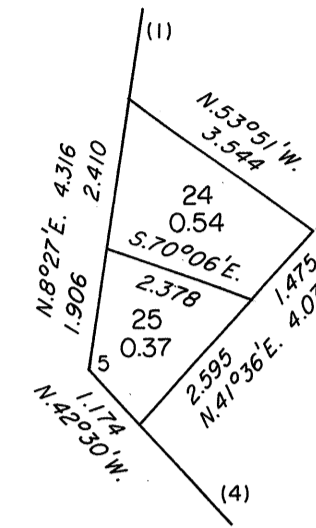


SUPPLEMENTAL PLAT OF S 1/2 SECTION 19

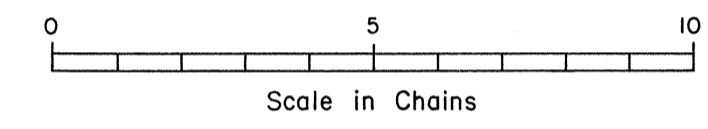
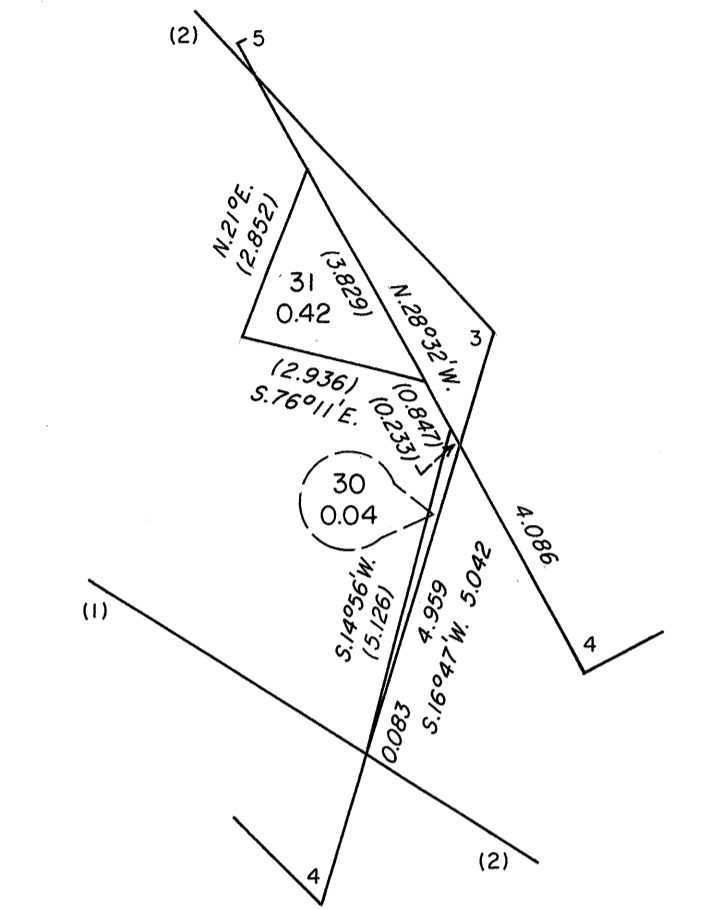
DETAIL B OF LOT 67



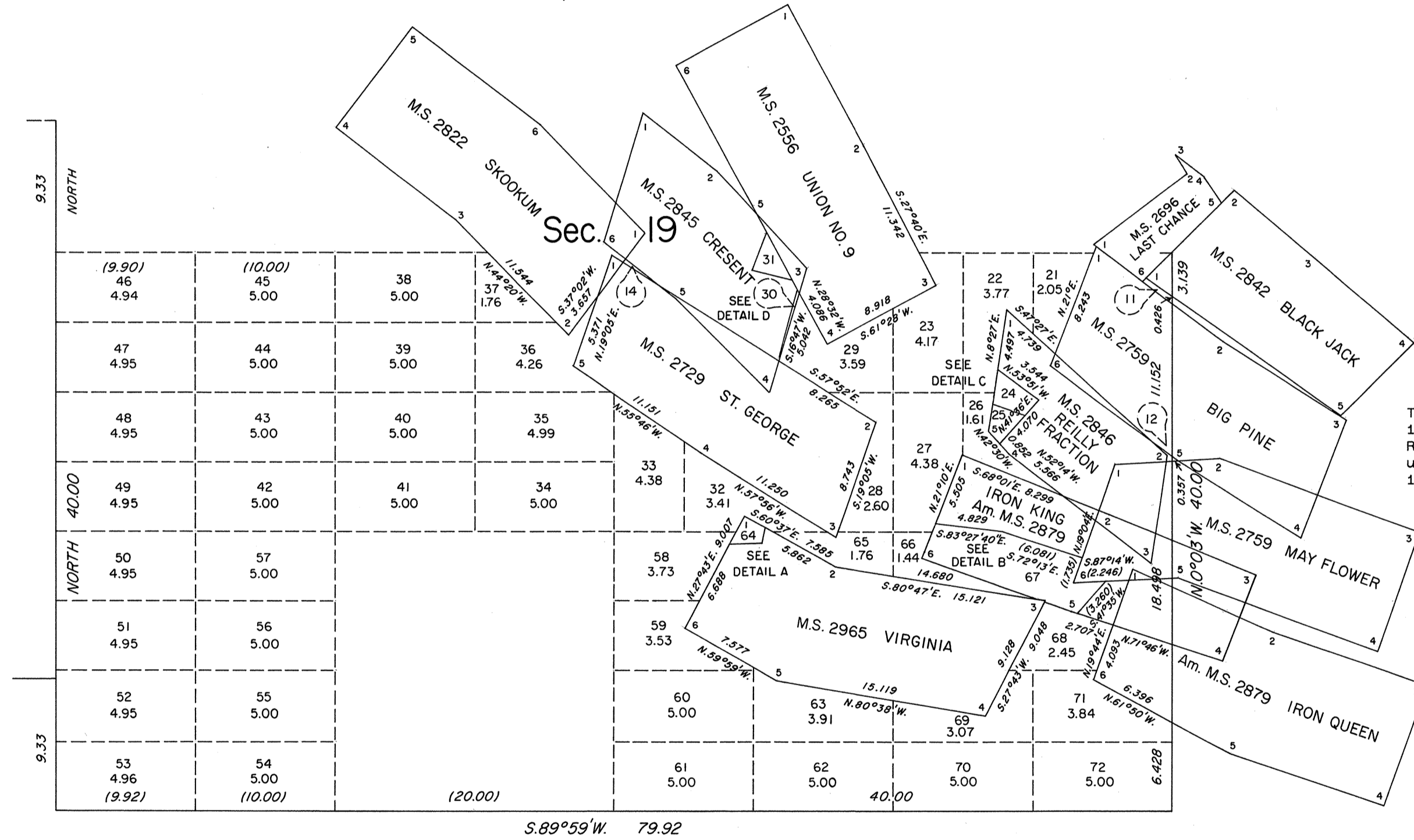
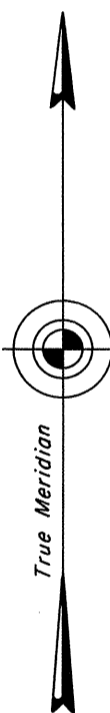
DETAIL C OF LOTS 24 AND 25



DETAIL D OF LOTS 30 AND 31



Sec. 24



This plat, showing a subdivision of original lots 13, 15, 16, 17, 18, 19 and 20, sec. 19, T. 8 N., R. 44 E., Mount Diablo Meridian, Nevada, is based upon the plats, in two sheets, approved April 10, 1957, and the mineral survey records.

UNITED STATES DEPARTMENT OF THE INTERIOR
BUREAU OF LAND MANAGEMENT

Reno, Nevada March 27, 1990

This plat, showing amended lottings, is based upon the official records and, having been correctly prepared in accordance with the regulations of this Bureau, is hereby accepted.

For the Director

John S. Parnell

Chief Cadastral Surveyor

