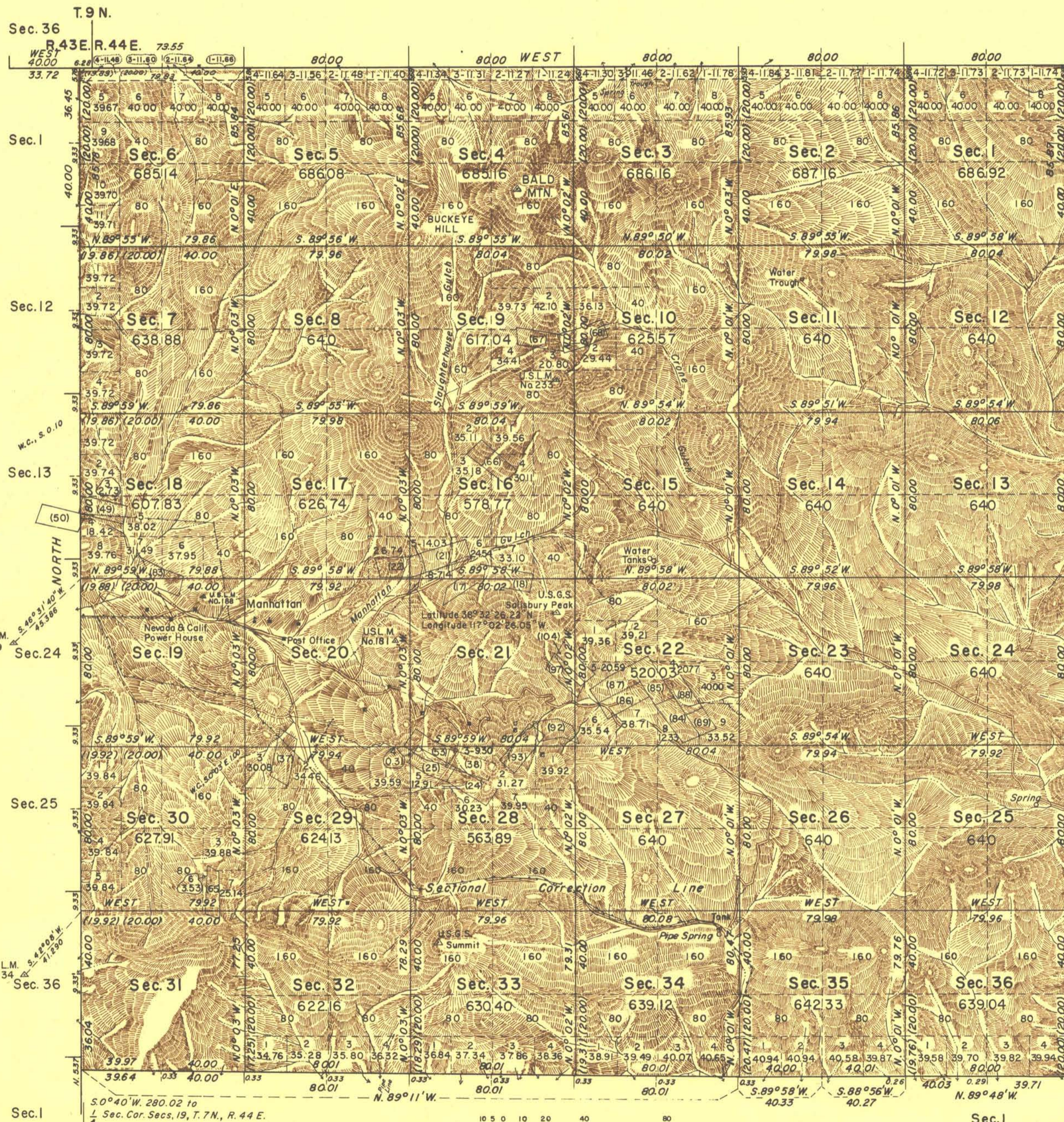


TOWNSHIP 8 NORTH, RANGE 44 EAST, MOUNT DIABLO MERIDIAN, NEVADA



T. 9 N., R. 44 1/2 E.

Sec. 1 The history of earlier surveys is contained in the field notes.

Sec. 12 This plat represents a retracement and reestablishment of the lines of the original south boundary designed to restore all corners in their true original locations according to the best available evidence; and the survey of the north boundary and subdivisional lines. Lottings and mineral segregations in sections 19, 20, 21, and 31 are shown on sheet 2, which also shows an index to the segregated claims.

Sec. 13 Survey executed by Emil Voigt, J. Glenn Dyer, and Clark Gumm, August 2 to November 24, 1939, under special instructions dated April 15, 1938 and supplemental special instructions dated May 4, 1939 for Group 252, Nevada.

T. 8 N., R. 44 1/2 E.

Sec. 24 UNITED STATES DEPARTMENT OF THE INTERIOR
BUREAU OF LAND MANAGEMENT
Washington, D. C. April 10, 1957

Sec. 25 This plat is strictly conformable to the approved field notes, and the survey, having been correctly executed in accordance with the requirements of law and the regulations of this Bureau, is hereby accepted.

For the Director
Carl G. Harrington
Cadastral Engineering Staff Officer

Latitude 38° 30' 0.3" N.
Longitude 116° 58' 59.3" W.
Sec. 36

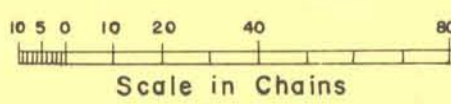
Sec. 6
T. 7 N., R. 45 E.



Mean magnetic declination 17° 40' E.

U.S.L.M. No. 189

U.S.L.M. No. 134



Area of Segregations _____ 1,476.93 Acres
 Area Surveyed, Exclusive of Segregations _____ 21,808.70 Acres
 Total Area _____ 23,285.63 Acres