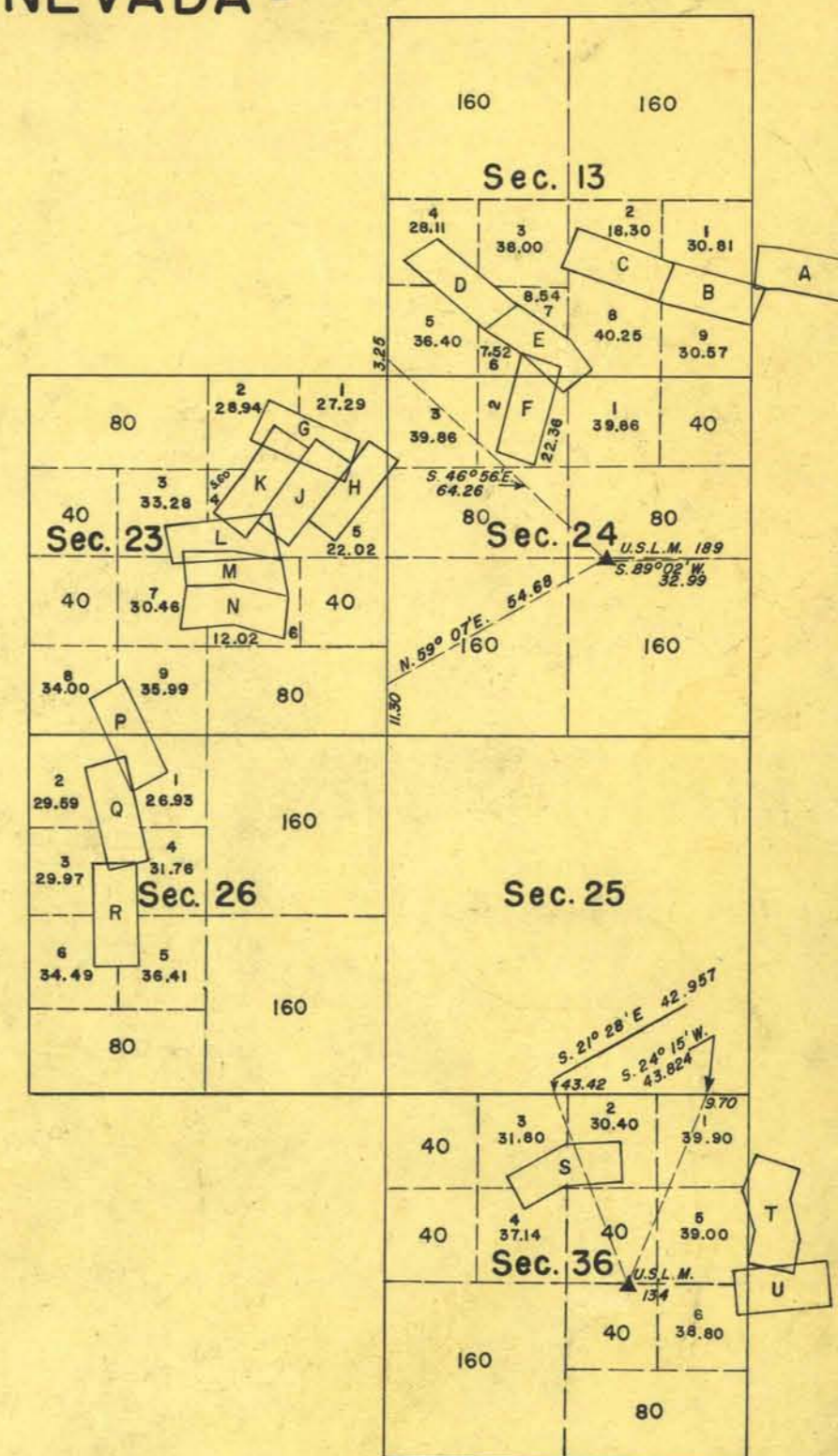
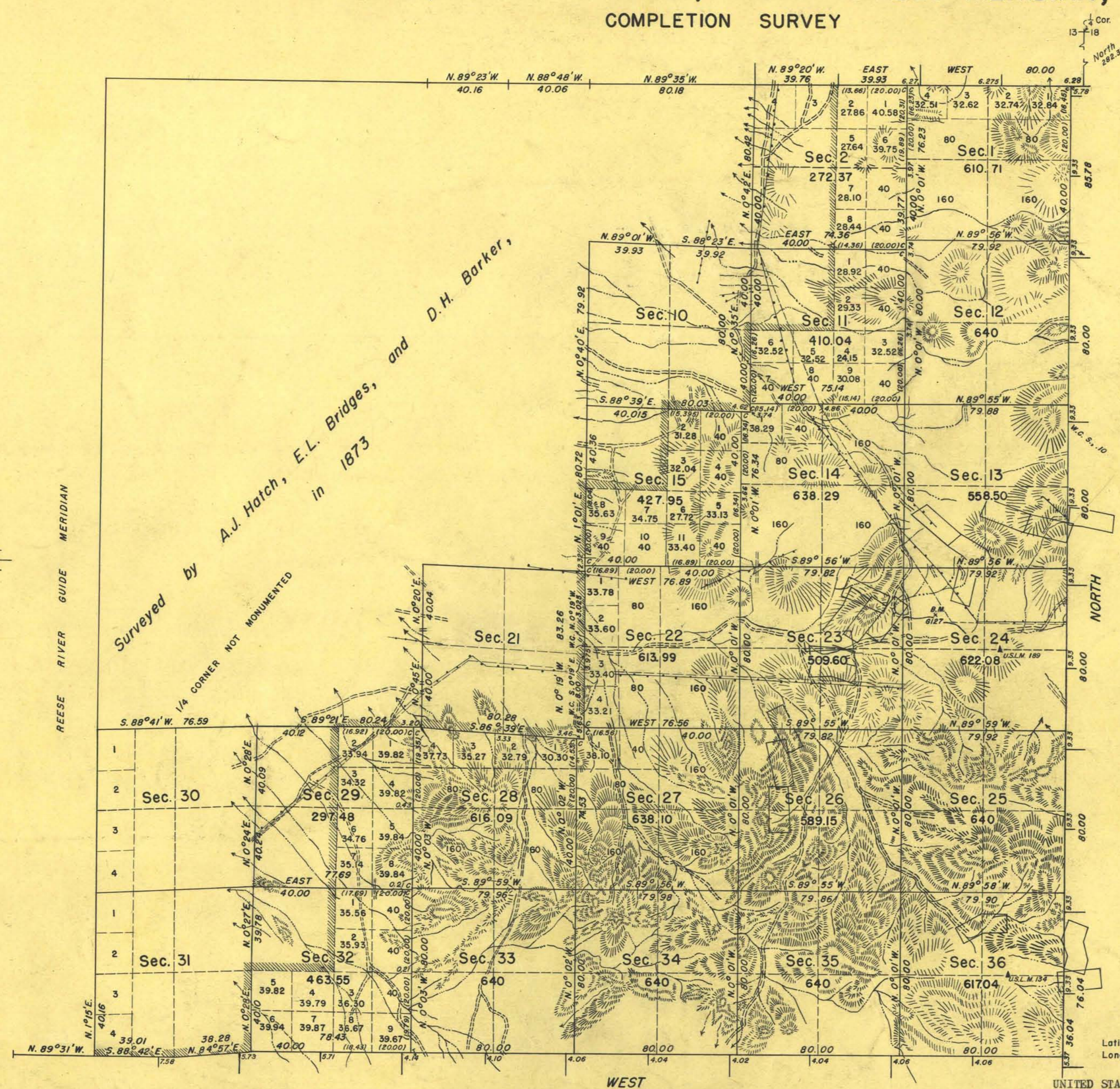


TOWNSHIP 8 NORTH, RANGE 43 EAST, MOUNT DIABLO MERIDIAN, NEVADA

COMPLETION SURVEY



See above Detail for Areas and Lots in
Secs. 13, 23, 24, 26 and 36

Patented Mining Claims

A	2876	Copper Farm
B	2876	Eldorado No. 2
C	2876	Eldorado No. 1
D	2851	Negoorok
E	2851	Monday
F	2724	Monday Fraction
G	2880	Georgy No. 5
H	2880	Georgy No. 4
J	2880	Georgy No. 1
K	2880	Georgy No. 2
L	2880	Georgy No. 3
M	4362	Diamond No. 11
N	4362	Diamond No. 2
P	3000	Saturday Night
Q	3000	Goldfield No. 4
R	3000	Double Eagle
S	1656	Manhattan
T	2986	Country Boy
U	2977	King Oscar No. 1

Latitude 38° 30' 05" N.
Longitude 117° 05' 40" W.

UNITED STATES DEPARTMENT OF THE INTERIOR
BUREAU OF LAND MANAGEMENT
Washington, D. C., April 6, 1954

This plat is strictly conformable to the approved field notes, and the survey, having been correctly executed in accordance with the requirements of law and the regulations of this Bureau, is hereby accepted.

For the Director

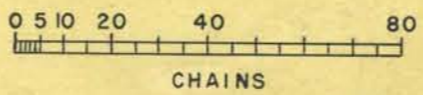
Donald A. Cement
Assistant Chief, Division of
Cadastral Engineering

This plat represents a retracement and reestablishment of portions of the original boundary and subdivisional lines, and survey of subdivisional lines to complete the township.

For description of subdivisions whose areas are not shown hereon see plat of survey approved October 13, 1873.

Survey executed by Emil Voigt and Wilson McConkie, Cadastral Engineers, October 31, 1939 to June 23, 1940, under Special Instructions for Group 260 Nevada, dated May 20, 1939.

Area Resurveyed: 1,761.68 Acres
Area Surveyed: 11,084.94 Acres
Total Area: 12,846.62 Acres



1466A

T 8 N, R 43 E