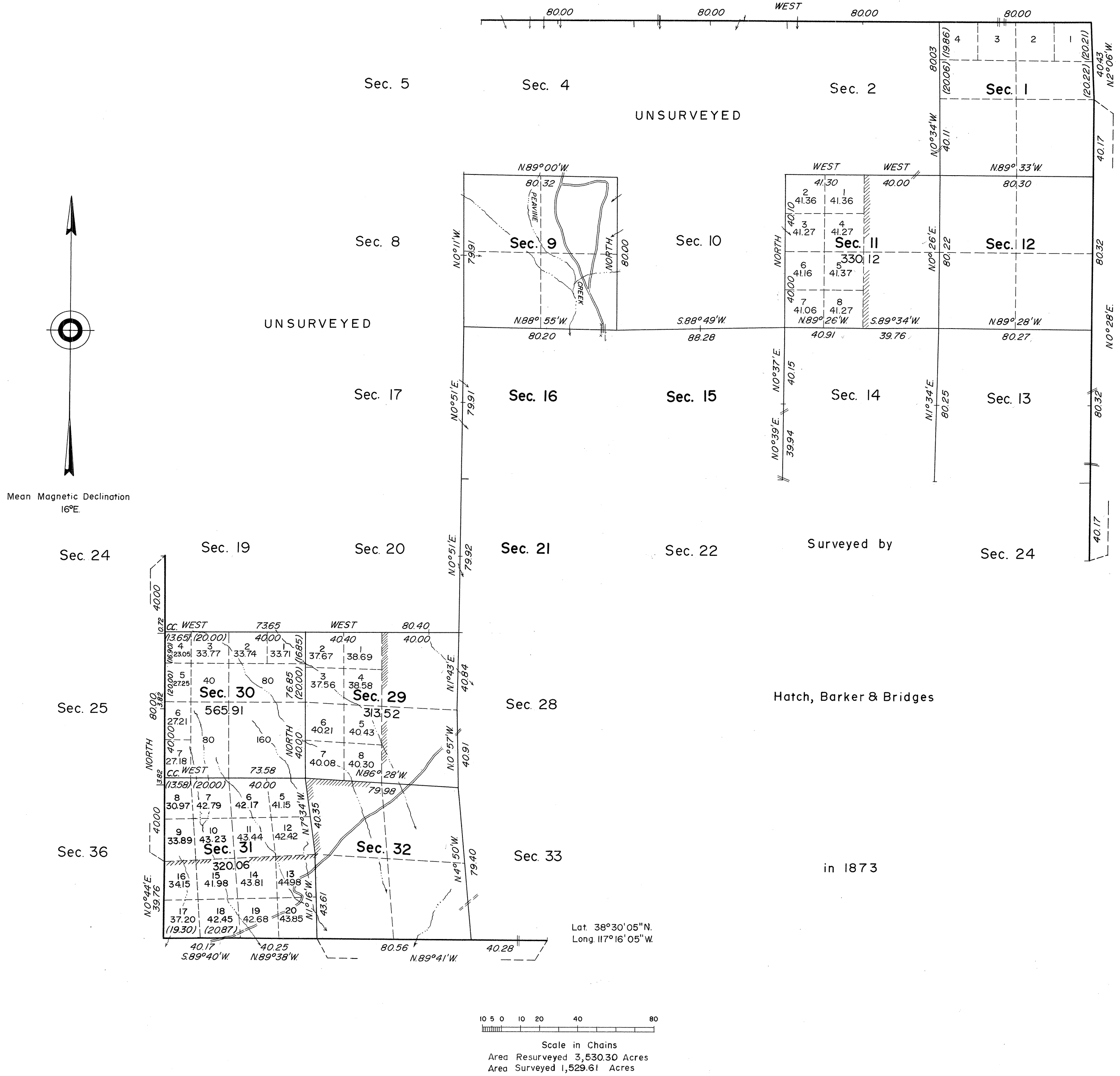


TOWNSHIP 8 NORTH, RANGE 42 EAST, OF THE MOUNT DIABLO MERIDIAN, NEVADA  
SURVEY AND DEPENDENT RESURVEY



History of earlier surveys is contained in the field notes.

This plat represents an independent resurvey of a portion of the east boundary of T. 8 N., R. 41 E., a dependent resurvey of portions of the north, south, and east boundaries and subdivisional lines, designed to restore the corners in their true original locations according to the best available evidence, and, the survey of a portion of the subdivisional lines of T. 8 N., R. 42 E., Mount Diablo Meridian, Nevada.

Except as indicated hereon, the lottings and areas are as shown on the plat approved October 13, 1873.

The portion of the west boundary of this township north from the quarter corner of sections 31 and 36, has been independently resurveyed by running new lines and marking new corners thereby annulling the former record lines and corners shown on the plat approved October 13, 1873.

These surveys were executed by Alburn D. Griffin, Cadastral Surveyor, May 29 to July 10, 1963, pursuant to Special Instructions for Group No. 412, Nevada, dated March 26, 1963.

UNITED STATES DEPARTMENT OF THE INTERIOR  
BUREAU OF LAND MANAGEMENT  
Washington, D. C. September 10, 1965

This plat is strictly conformable to the approved field notes, and the survey, having been correctly executed in accordance with the requirements of law and the regulations of this Bureau, is hereby accepted.

For the Director

*E. J. Pennington*  
Chief, Division of Engineering