

OFFICIALLY FILED
NEVADA STATE OFFICE
10:00 A.M., May 11, 1978

TOWNSHIP 8 NORTH, RANGE 39 EAST, OF THE MOUNT DIABLO MERIDIAN, NEVADA

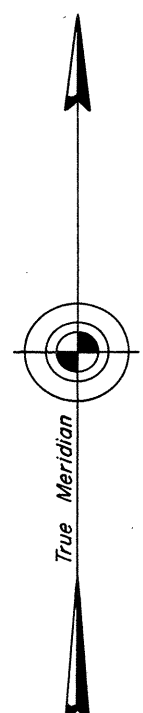
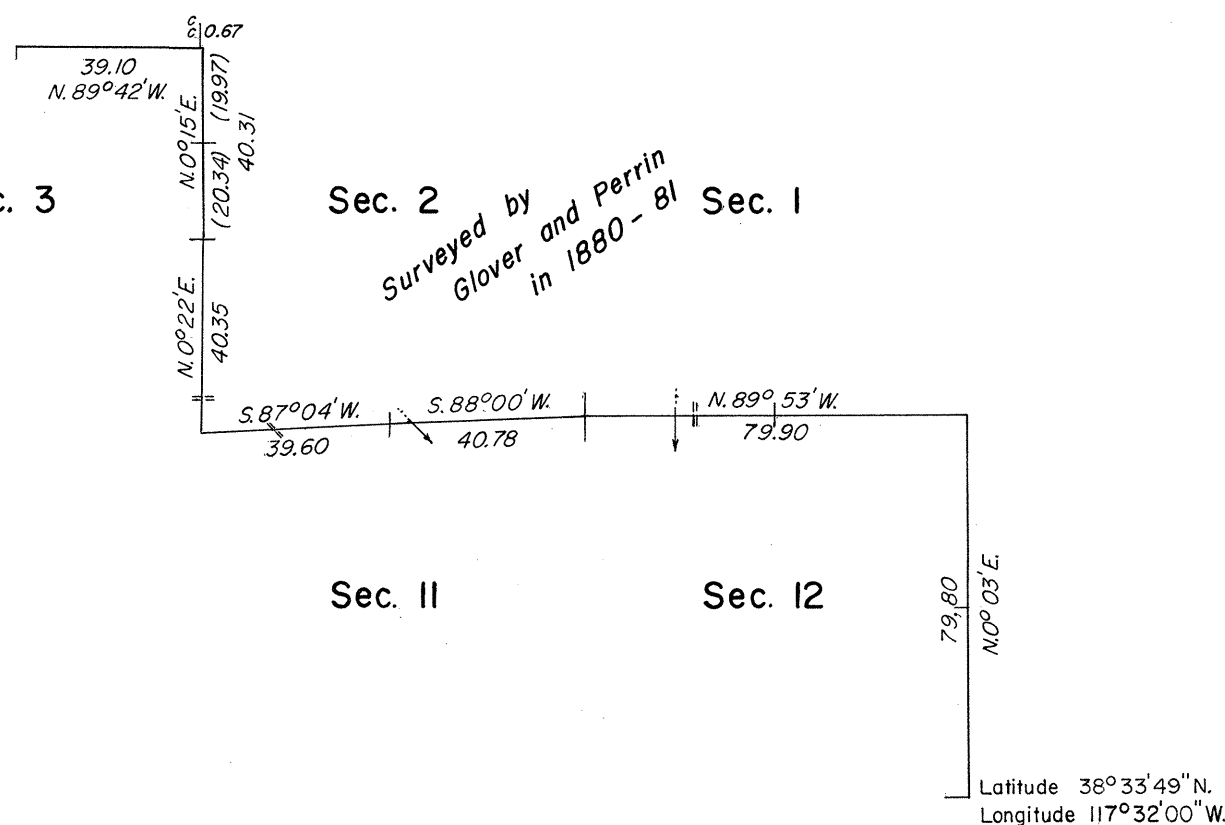
DEPENDENT RESURVEY

Sec. 34 Sec. 35

Sec. 3 Sec. 2 Sec. 1

*Surveyed by
Glover and Perrin
in 1880-81*

*Surveyed by Glover and Perrin
in 1880-81*



Mean Magnetic Declination
17° E.

A history of surveys is contained in the field notes.

This plat represents a dependent resurvey of a portion of the east boundary, a portion of the north boundary, and a portion of the subdivisional lines of T. 8 N., R. 39 E., Mount Diablo Meridian, Nevada, designed to restore the corners in their true original locations according to the best available evidence.

Survey executed by Robert A. Pratt, Cadastral Surveyor, August 2 to October 6, 1977, under Special Instructions dated July 27, 1977, for Group No. 552, Nevada.

UNITED STATES DEPARTMENT OF THE INTERIOR
BUREAU OF LAND MANAGEMENT
Washington, D.C. April 26, 1978

This plat is strictly conformable to the approved field notes, and the survey, having been correctly executed in accordance with the requirements of law and the regulations of this Bureau, is hereby accepted.

For the Director

Bernard W. Foster
Chief, Division of Cadastral Survey

