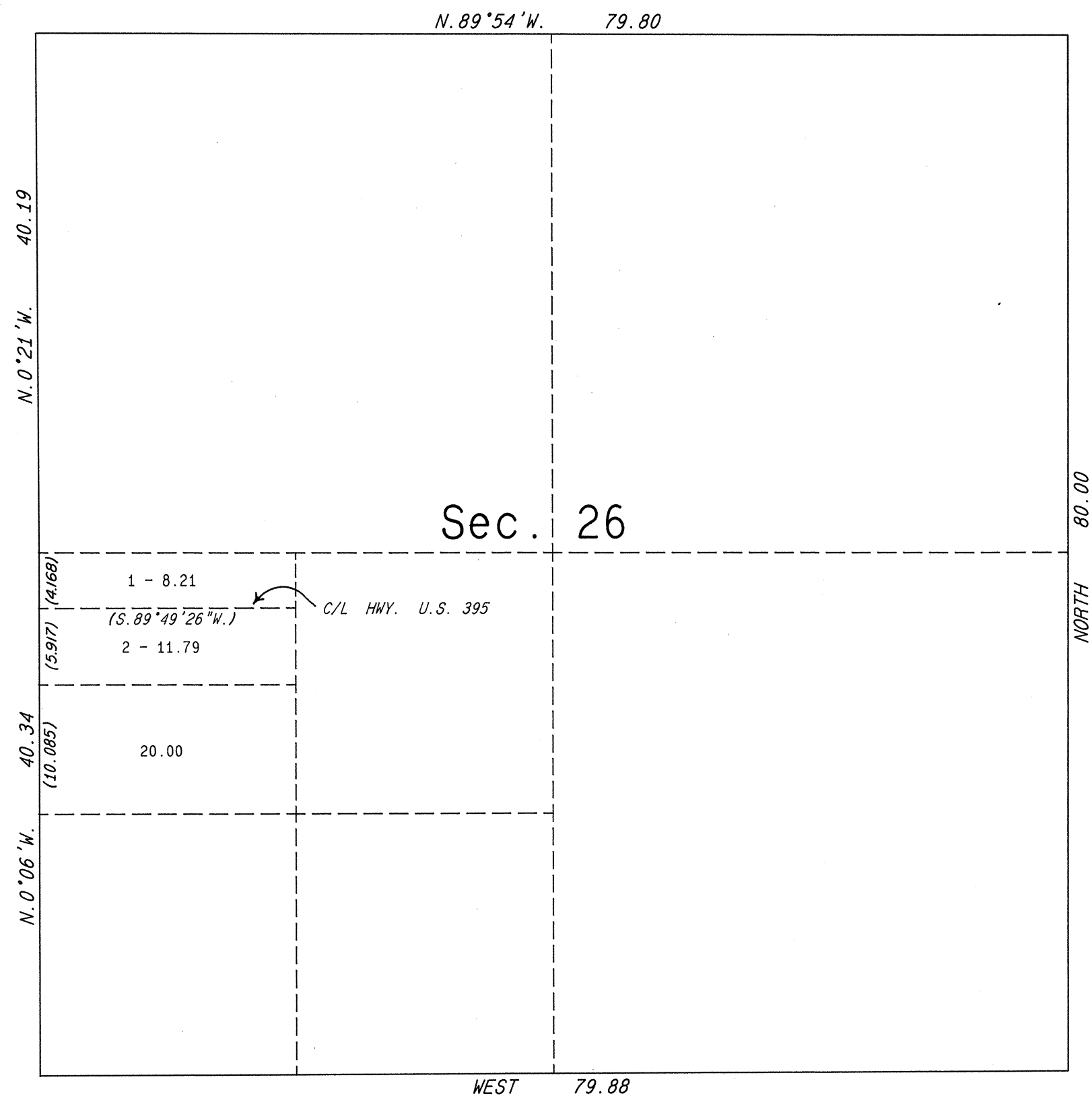


ORIGINAL

TOWNSHIP 8 NORTH, RANGE 30 EAST, OF THE MOUNT DIABLO MERIDIAN, NEVADA  
SUPPLEMENTAL PLAT OF SECTION 26



This plat, showing a subdivision of the NW 1/4 of the SW 1/4 sec. 26, T. 8 N., R. 30 E., Mount Diablo Meridian, Nevada is based upon the plats approved October 27, 1880 and January 19, 1888, the plat approved April 15, 1932 and accepted April 29, 1932, and the Nevada Department of Highway right-of-way application dated June 2, 1983.

UNITED STATES DEPARTMENT OF THE INTERIOR  
BUREAU OF LAND MANAGEMENT

Reno, Nevada December 13, 1985

This plat, showing amended lottings, is based upon the official records and, having been correctly prepared in accordance with the regulations of this Bureau, is hereby accepted.

For the Director

*Lael E. Bland*

Chief Cadastral Surveyor

