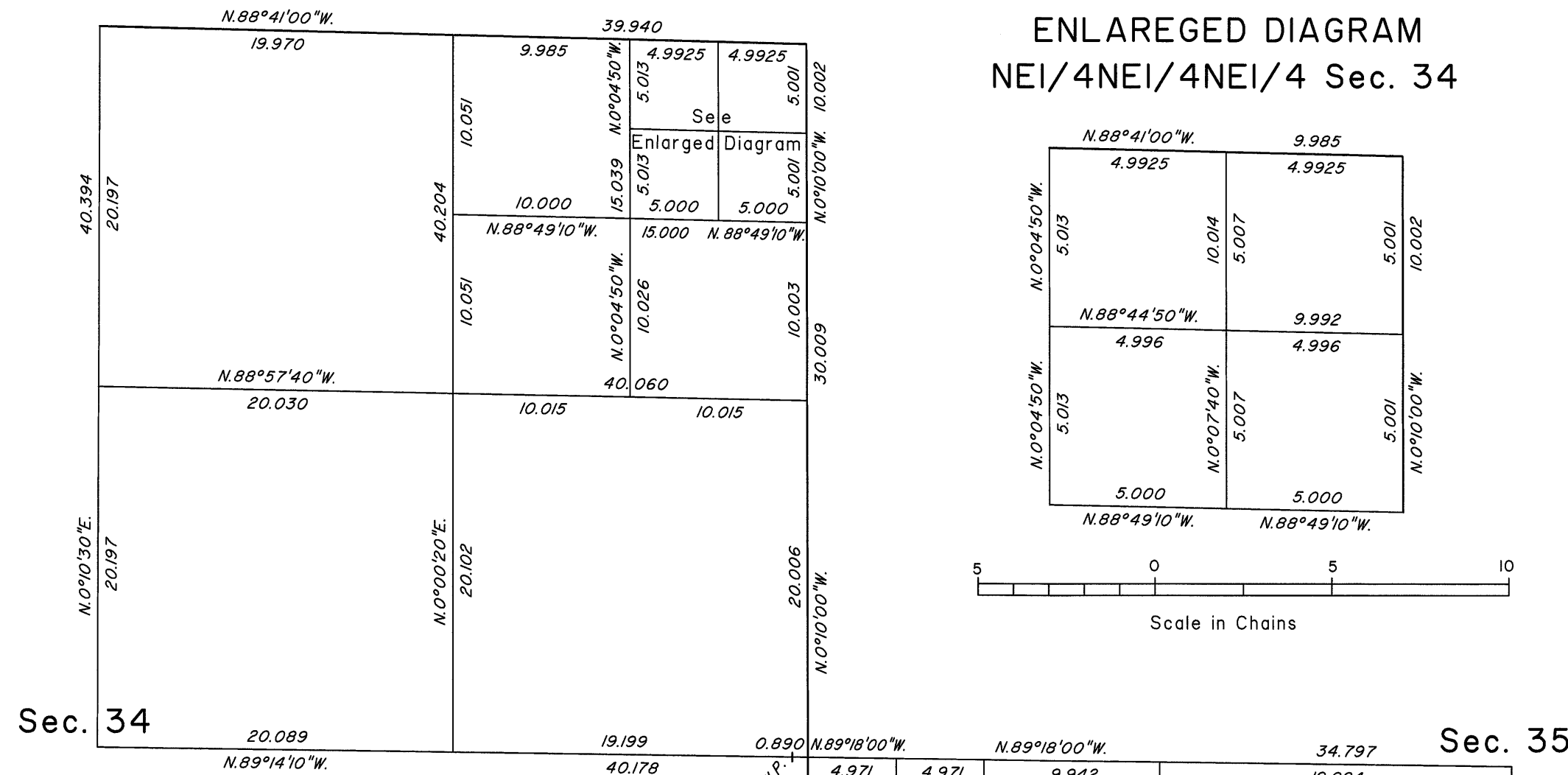
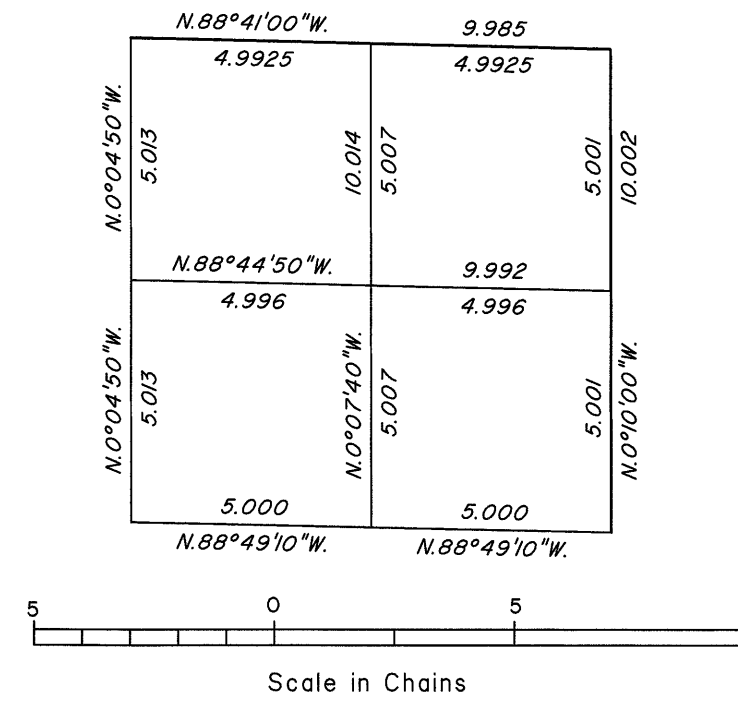


TOWNSHIP 7 SOUTH, RANGE 61 EAST, OF THE MOUNT DIABLO MERIDIAN, NEVADA
ENLARGED DIAGRAM

OFFICIALLY FILED
NEVADA STATE OFFICE
at 10:00 AM on March 7, 2012

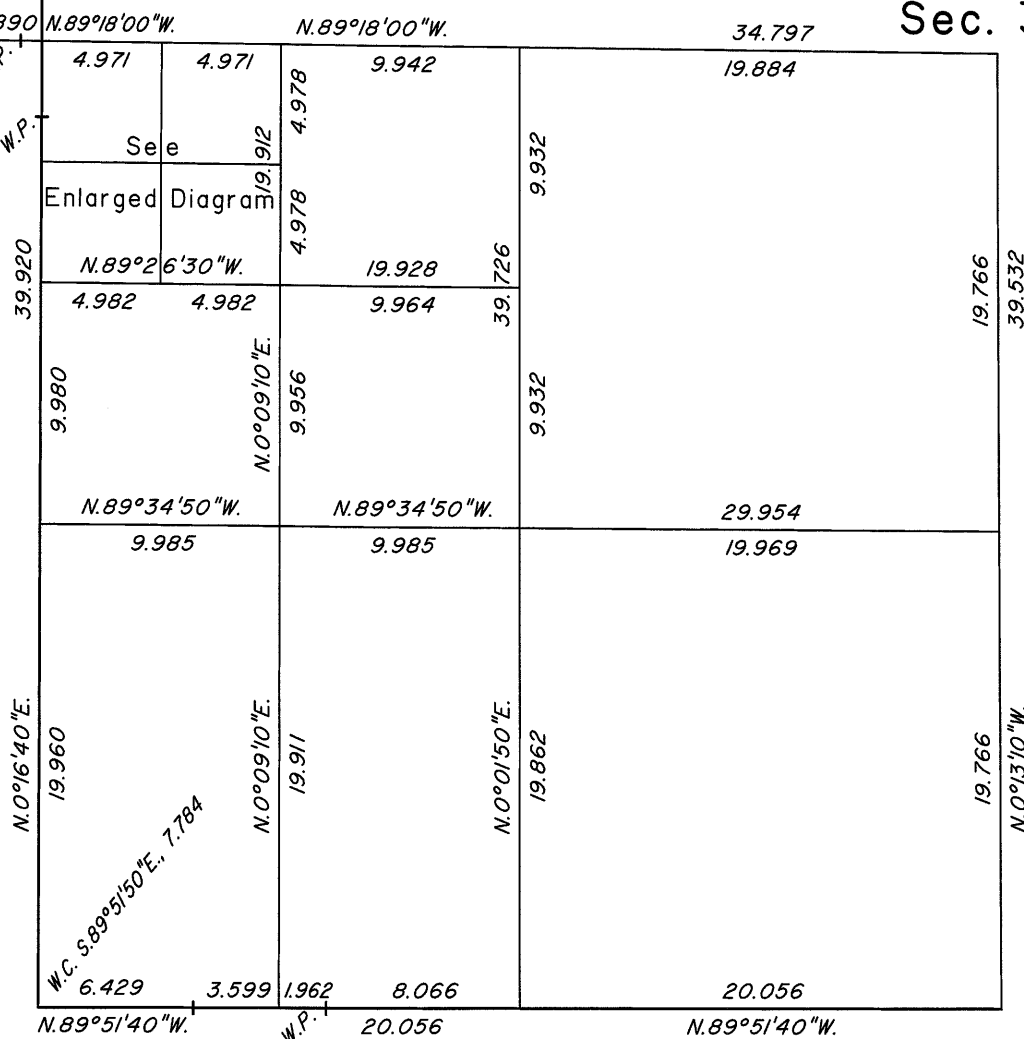
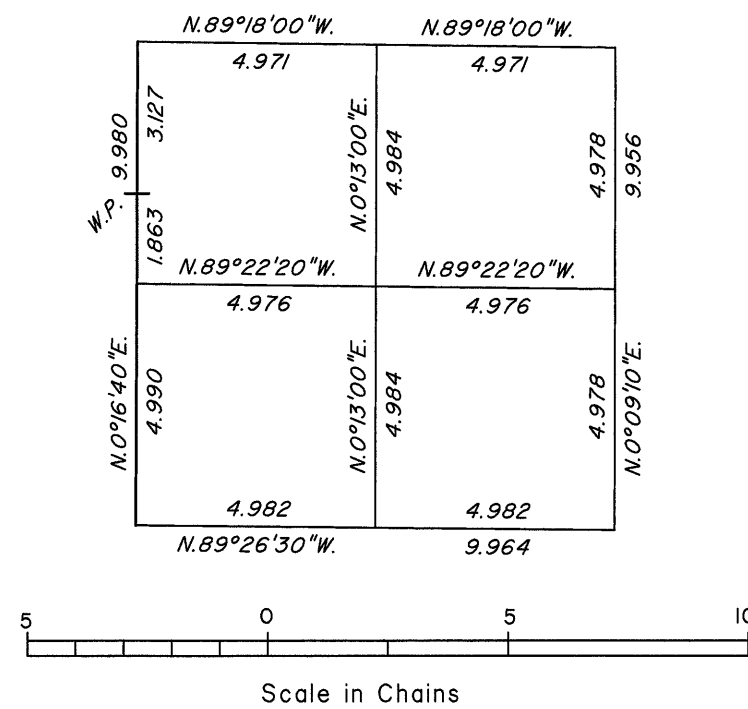


ENLARGED DIAGRAM
NE1/4NE1/4NE1/4 Sec. 34



Reference should be made to Sheet No. 1 for survey information.

ENLARGED DIAGRAM
NW1/4NW1/4SW1/4 Sec. 35



UNITED STATES DEPARTMENT OF THE INTERIOR
BUREAU OF LAND MANAGEMENT

Reno, Nevada March 2, 2012

This plat is strictly conformable to the approved field notes, and the survey, having been correctly executed in accordance with the requirements of law and the regulations of this Bureau, is hereby accepted.

For the Director

Chief Cadastral Surveyor for Nevada

