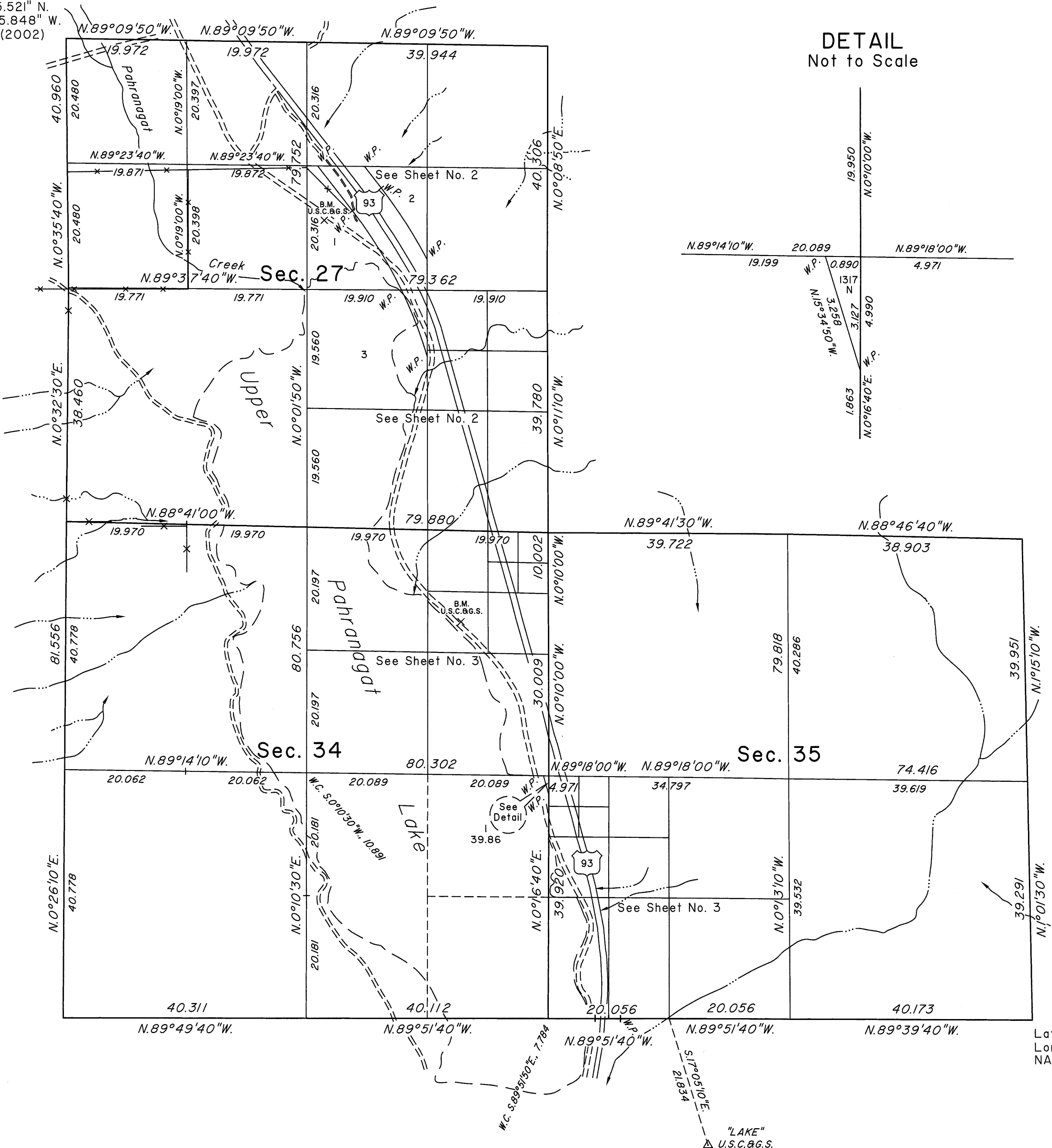
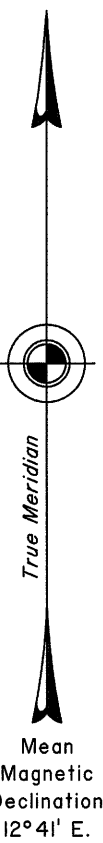


TOWNSHIP 7 SOUTH, RANGE 61 EAST, OF THE MOUNT DIABLO MERIDIAN, NEVADA

DEPENDENT RESURVEY, SUBDIVISION AND METES-AND-BOUNDS SURVEY

Latitude 37°19'05.521" N.
Longitude 115°08'15.848" W.
NAD83 (CORS96) (2002)



DETAIL
Not to Scale

A history of surveys is contained in the field notes.

This plat, in three sheets, represents the dependent resurvey of a portion of the south boundary and a portion of the subdivisional lines designed to restore the corners in their true original locations according to the best available evidence, the subdivision of sections 27, 34 and 35, and the metes-and-bounds surveys of certain parcel boundaries through portions of sections 27 and 34, Township 7 South, Range 61 East, Mount Diablo Meridian, Nevada.

Except as indicated hereon, the lottings and areas are as shown on the plat approved April 20, 1870.

Certain lottings in sections 27 and 34 represent precisely the same lands described in deeds of aquired lands referenced in the field notes.

Survey executed by Kane M. Hellebust, Cadastral Surveyor, beginning on March 4, 2010, and completed October 5, 2011, pursuant to Special Instructions dated March 1, 2010, for Group No. 893, Nevada.

UNITED STATES DEPARTMENT OF THE INTERIOR
BUREAU OF LAND MANAGEMENT

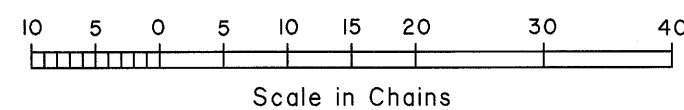
Reno, Nevada March 2, 2012

This plat is strictly conformable to the approved field notes, and the survey, having been correctly executed in accordance with the requirements of law and the regulations of this Bureau, is hereby accepted.

For the Director

Chief Cadastral Surveyor for Nevada

TOTAL AREA OF FEDERAL INTEREST LAND RESURVEYED = 1743.63 ACRES



Latitude 37°17'20.141" N.
Longitude 115°06'05.077" W.
NAD83 (CORS96) (2002)

OFFICIALLY FILED
NEVADA STATE OFFICE
at 10:00 AM on March 7, 2012