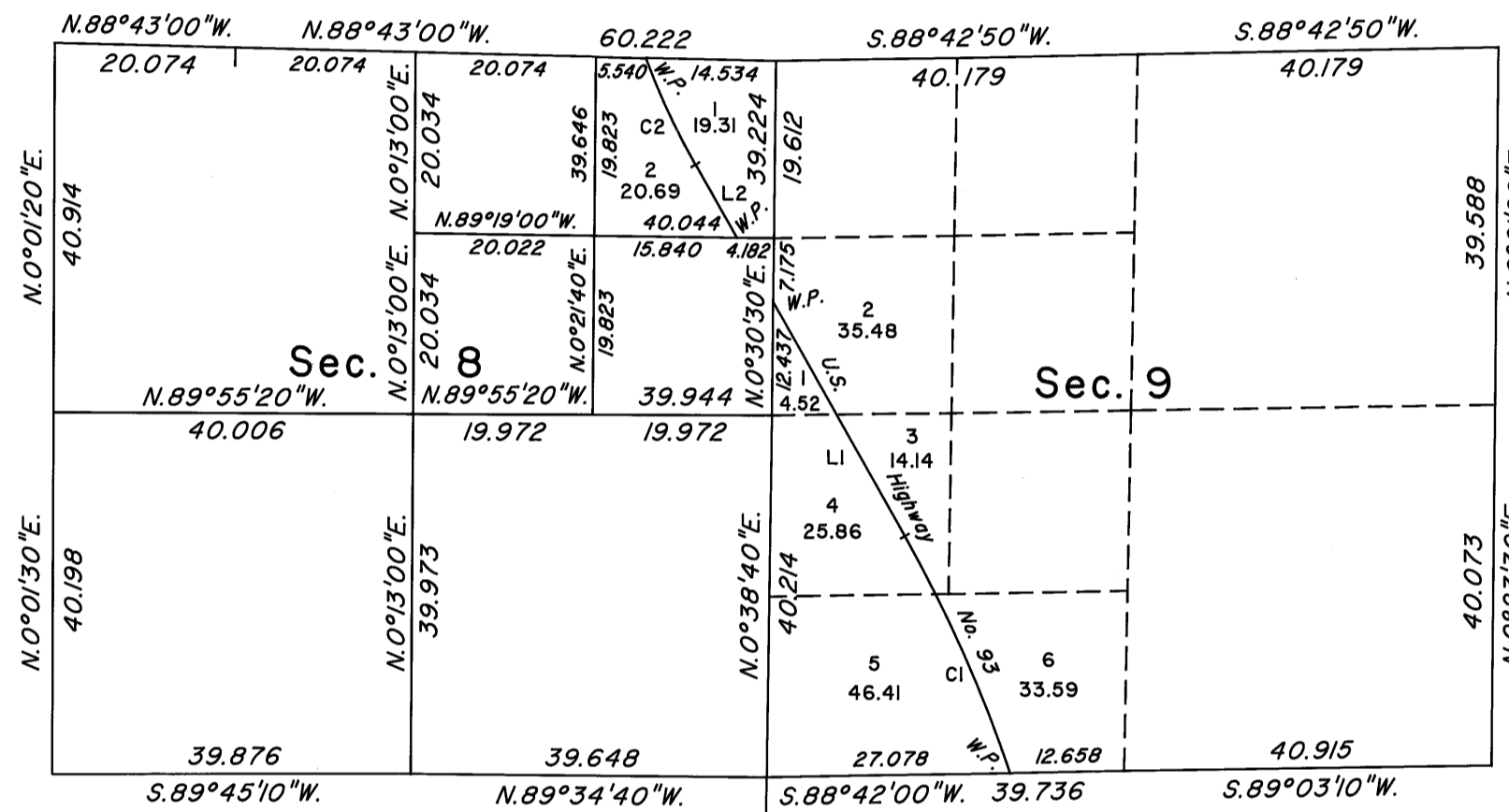
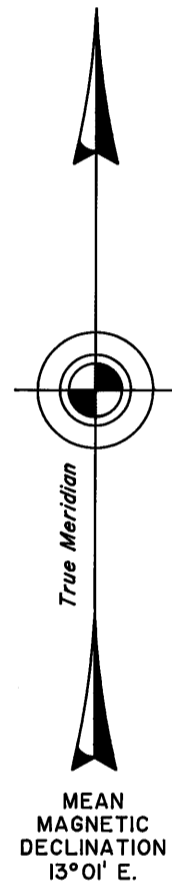


TOWNSHIP 7 SOUTH, RANGE 61 EAST, OF THE MOUNT DIABLO MERIDIAN, NEVADA  
DEPENDENT RESURVEY, SUBDIVISION AND METES-AND-BOUNDS SURVEY

Latitude 37°21'43.739"N.  
Longitude 115°10'25.192"W.  
NAD 83



Latitude 37°19'58.271"N.  
Longitude 115°09'20.932"W.  
NAD 83

A history of surveys is contained in the field notes.

This plat represents the dependent resurvey of a portion of the subdivisonal lines designed to restore the corners in their true original locations according to the best available evidence, the subdivision of section 8, and a metes-and-bounds survey of the centerline of the right-of-way of U.S. Highway No. 93, through section 9 and a portion of section 8, Township 7 South, Range 61 East, Mount Diablo Meridian, Nevada.

Except as indicated hereon, the lottings and areas are as shown on the plat approved April 20, 1870.

This survey was executed by Scott A. Burkhardt, Cadastral Surveyor, beginning April 26, 2007, and completed September 25, 2007, pursuant to Special Instructions dated April 20, 2007, for Group No. 851, Nevada.

UNITED STATES DEPARTMENT OF THE INTERIOR  
BUREAU OF LAND MANAGEMENT

Reno, Nevada      October 29, 2007

This plat is strictly conformable to the approved field notes, and the survey, having been correctly executed in accordance with the requirements of law and the regulations of this Bureau, is hereby accepted.

For the Director

Chief Cadastral Surveyor, Nevada

LINE	BEARING	DISTANCE
METES-AND-BOUNDS IN SECTIONS 8 & 9		
C1	CURVE	
L1	N. 29° 41' 00" W.	29.658
L2	N. 29° 41' 00" W.	9.346
C2	CURVE	

CURVE DATA:	
C1	C2
Δ=10° 54' 30"	Δ=8° 57' 00"
R=10,000 Ft.	R=5,500 Ft.
L=28.846 Chs.	L=13.017 Chs.
C=28.803 Chs.	C=13.004 Chs.

