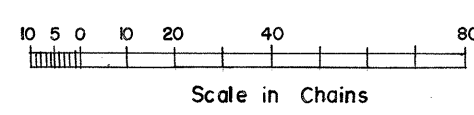
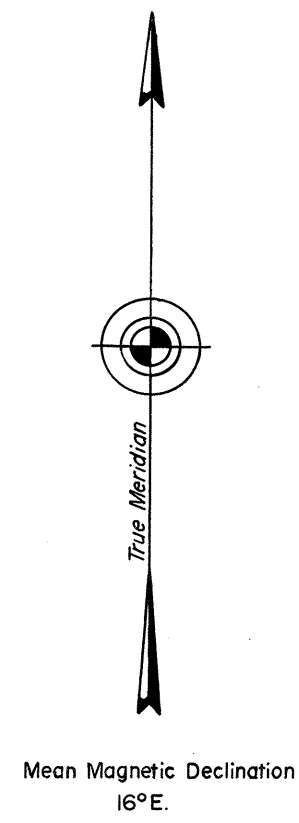
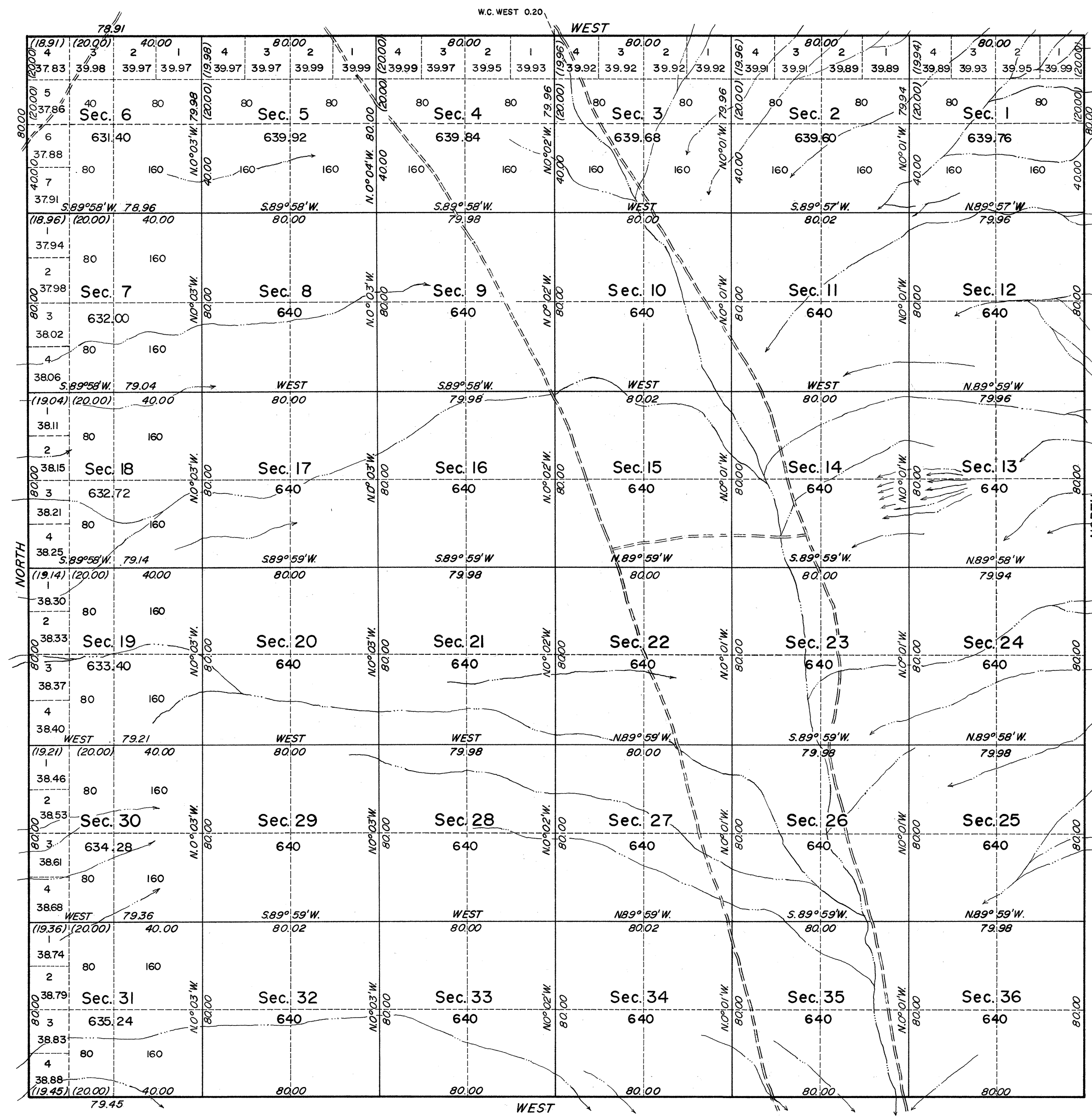


# TOWNSHIP 7 SOUTH, RANGE 58 EAST, OF THE MOUNT DIABLO MERIDIAN, NEVADA.

OFFICIALLY FILED  
NEVADA LAND OFFICE  
10:00 A.M. JUNE 20, 1967

This plat represents the survey of the south and east boundaries and subdivisional lines of T. 7 S., R. 58 E., Mount Diablo Meridian, Nevada.

The survey was executed by Eldon W. Sibley, Cadastral Surveyor, June 11, 1965, to June 28, 1966, under Special Instructions dated June 11, 1965, for Group No. 430, Nevada.



Area Surveyed 22,997.84 Acres

UNITED STATES DEPARTMENT OF THE INTERIOR  
BUREAU OF LAND MANAGEMENT  
Washington, D. C. April 6, 1967

This plat is strictly conformable to the approved field notes, and the survey, having been correctly executed in accordance with the requirements of law and the regulations of this Bureau, is hereby accepted.

For the Director

Latitude 37° 17' 19.58" N.  
Longitude 115° 24' 36.70" W.

*E. Huntington*  
Chief, Division of Engineering

T. 7 S. R. 58 E.