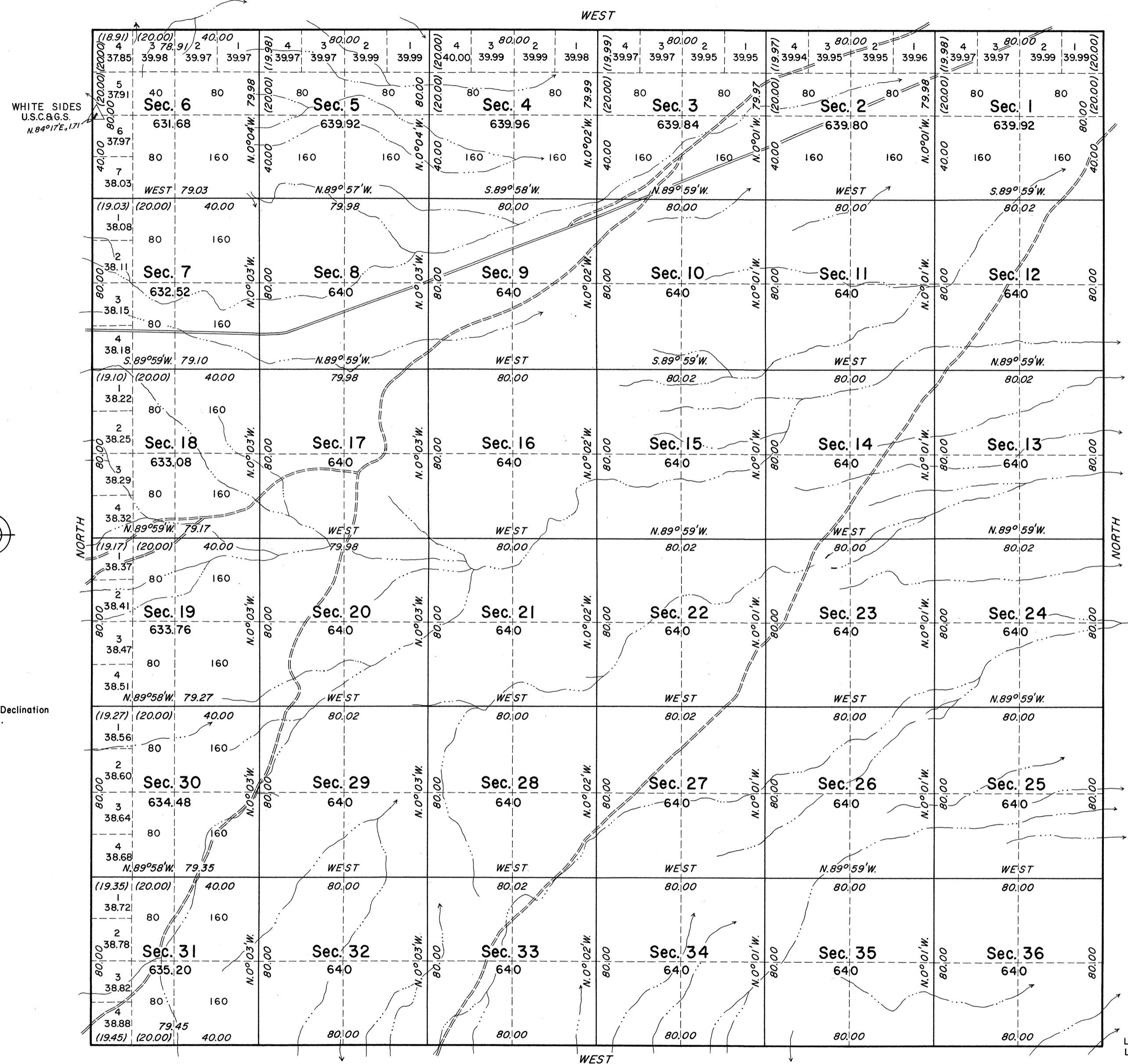


TOWNSHIP 7 SOUTH, RANGE 57 EAST, OF THE MOUNT DIABLO MERIDIAN, NEVADA

OFFICIALLY FILED
NEVADA LAND OFFICE
10:00 A.M., JUNE 20, 1967



WHITE SIDES
U.S.C.&G.S.
N. 89° 17' E, 171'



This plat represents the survey of the south, east, and west boundaries and subdivisional lines of T. 7 S., R. 57 E., Mount Diablo Meridian, Nevada.

The survey was executed by Eldon W. Sibley, Cadastral Surveyor, June 11 to November 9, 1965, under Special Instructions dated June 11, 1965, for Group No. 430, Nevada.

UNITED STATES DEPARTMENT OF THE INTERIOR
BUREAU OF LAND MANAGEMENT
Washington, D. C. April 6, 1967

This plat is strictly conformable to the approved field notes, and the survey, having been correctly executed in accordance with the requirements of law and the regulations of this Bureau, is hereby accepted.

For the Director

E. W. Sibley
Chief, Division of Engineering

Latitude 37° 17' 19.58" N.
Longitude 115° 31' 08.18" W.

