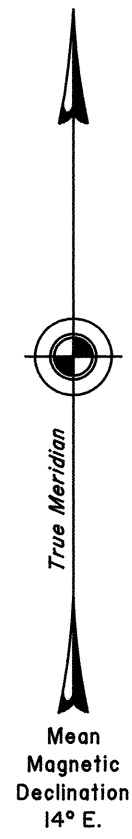


TOWNSHIP 7 SOUTH, RANGE 56 EAST, OF THE MOUNT DIABLO MERIDIAN, NEVADA

SURVEY AND SUBDIVISIONS



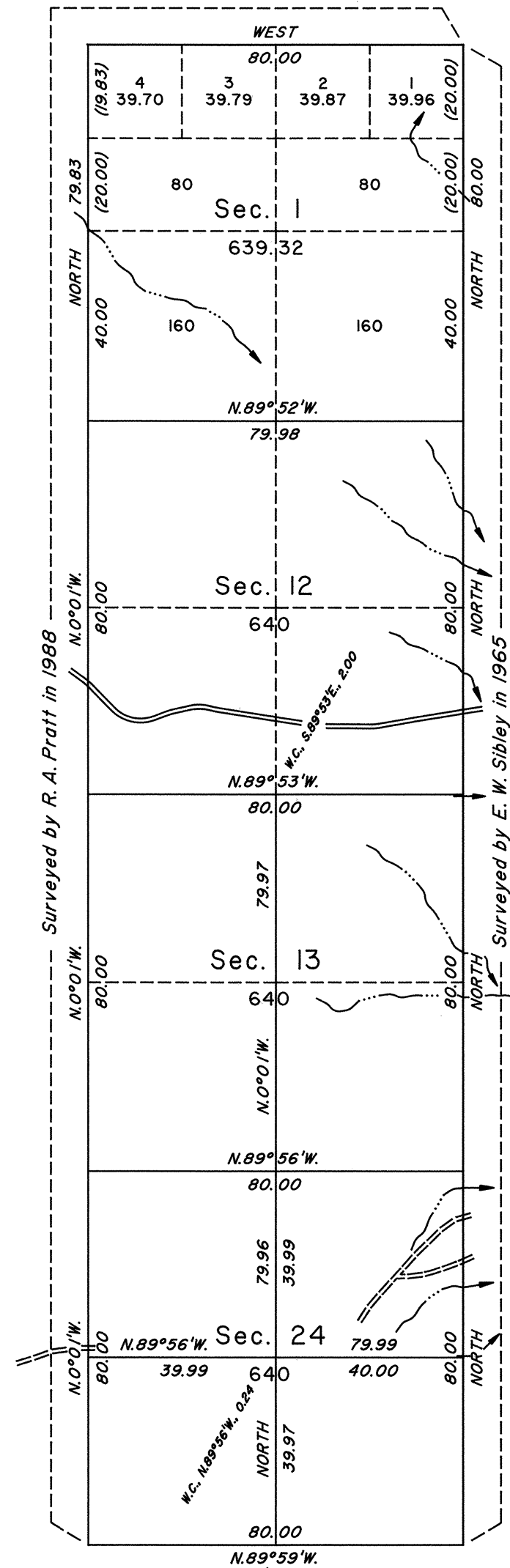
Unsurveyed

Sec. 2

Sec. 11

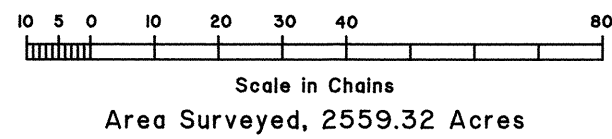
Sec. 14

Sec. 23



GPS, U.S.A.F., NAD 27
Latitude 37°19'04.03"N.
Longitude 115°38'12.37"W.

Sec. 25



A history of surveys is contained in the field notes.
This plat represents the survey of a portion of the subdivis-
ional lines, and the subdivision of sections 13 and 24,
Township 7 South, Range 56 East, Mount Diablo Meridian,
Nevada.
Survey executed by Ronald E. Williams, Cadastral Surveyor,
beginning April 23, 1995, and completed April 29, 1995,
pursuant to Special Instructions dated April 20, 1995,
for Group No. 754, Nevada.

UNITED STATES DEPARTMENT OF THE INTERIOR
BUREAU OF LAND MANAGEMENT

Reno, Nevada December 3, 1996

This plat is strictly conformable to the approved field notes,
and the survey, having been correctly executed in accordance
with the requirements of law and the regulations of this Bureau,
is hereby accepted.

For the Director

Robert H. Thompson

Acting Chief Cadastral Surveyor, Nevada