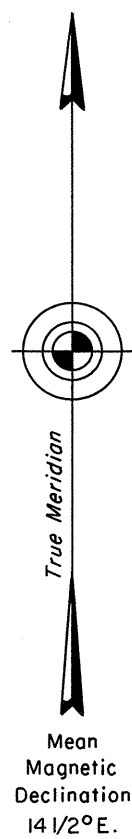
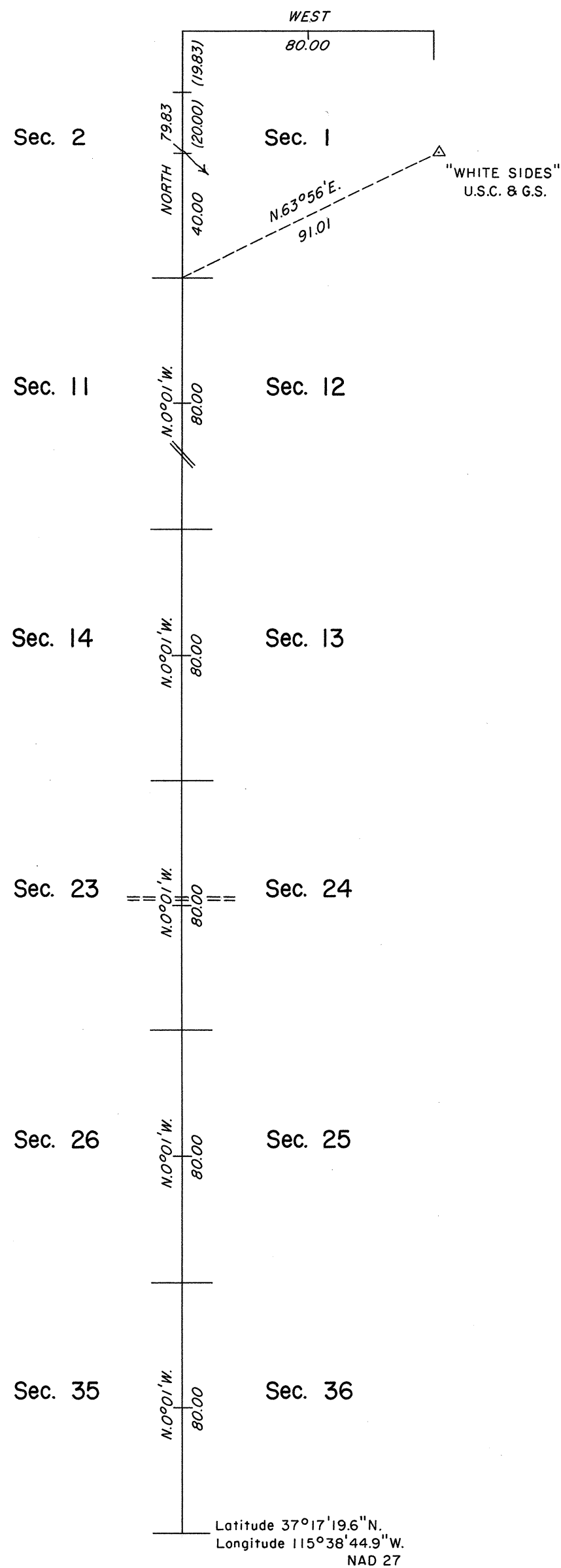


ORIGINAL

TOWNSHIP 7 SOUTH, RANGE 56 EAST, OF THE MOUNT DIABLO MERIDIAN, NEVADA



Unsurveyed



History of the earlier surveys is contained in the field notes.

The north boundary of section 1 was surveyed concurrently under T. 6 S., R. 56 E., of this same Group.

This plat represents the survey of a portion of the subdivisional lines of T. 7 S., R. 56 E., Mount Diablo Meridian, Nevada.

Survey executed by Robert A. Pratt, Cadastral Surveyor, beginning November 2, 1988, and completed November 7, 1988, under Special Instructions dated October 13, 1988, for Group No. 667, Nevada.

UNITED STATES DEPARTMENT OF THE INTERIOR
BUREAU OF LAND MANAGEMENT

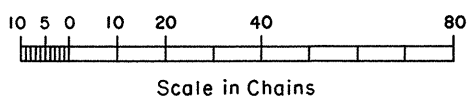
Reno, Nevada April 19, 1989

This plat is strictly conformable to the approved field notes, and the survey, having been correctly executed in accordance with the requirements of law and the regulations of this Bureau, is hereby accepted.

For the Director

Lael E. Bland

Chief Cadastral Surveyor



T. 7 S., R. 56 E., M.D.M.