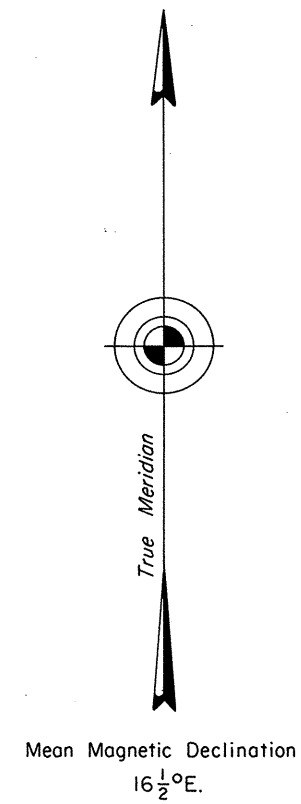


TOWNSHIP 7 SOUTH, RANGE 55 1/2 EAST, OF THE MOUNT DIABLO MERIDIAN, NEVADA

OFFICIALLY FILED
NEVADA STATE OFFICE
10:00 AM, April 8, 1980



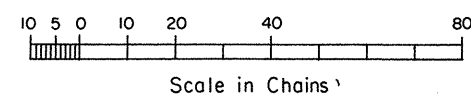
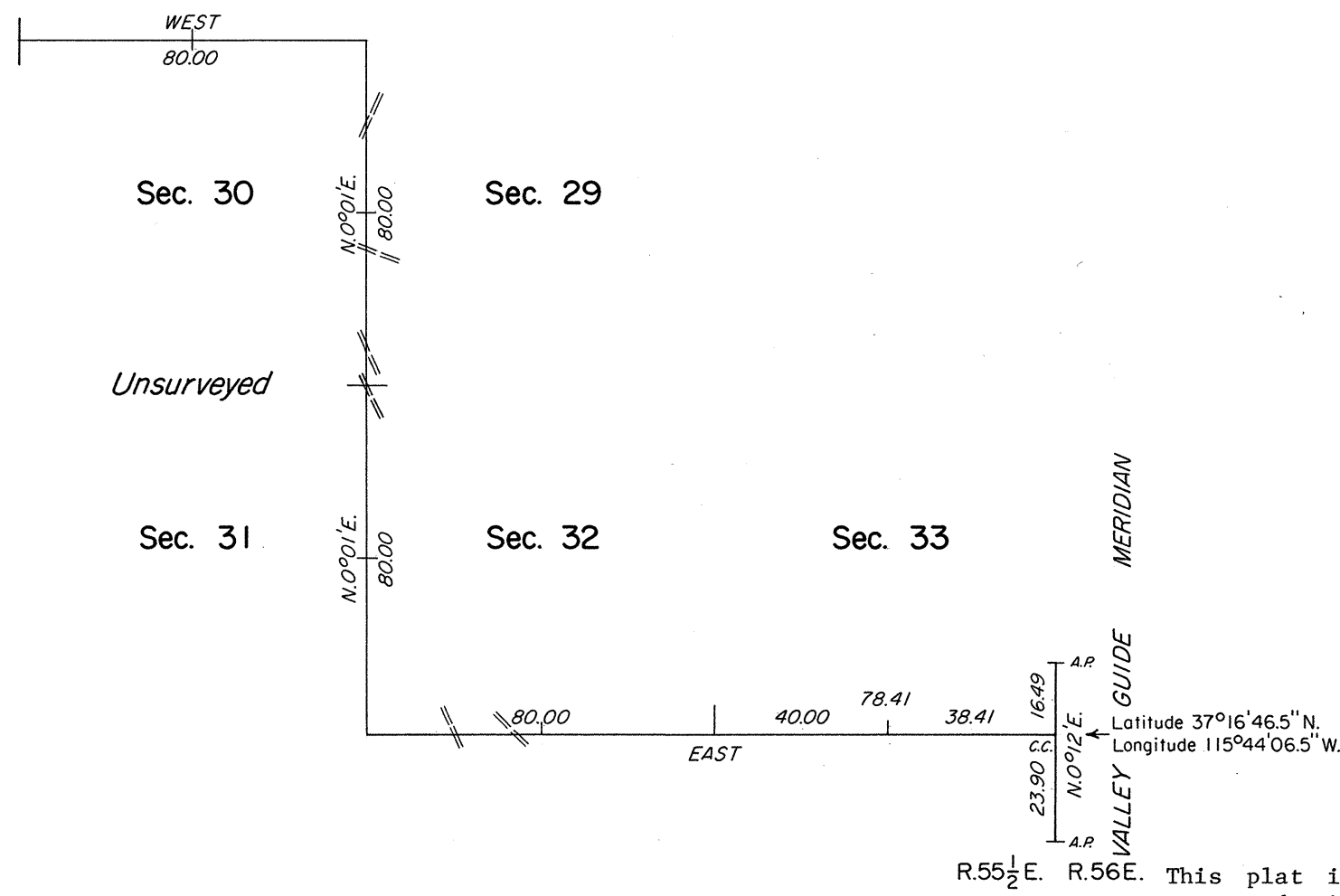
Unsurveyed

A history of surveys is contained in the field notes.

This plat represents the survey of a portion of the south boundary and a portion of the subdivisional lines of T. 7 S., R. 55 1/2 E., Mount Diablo Meridian, Nevada.

Survey executed by Robert A. Pratt, Cadastral Surveyor, beginning March 15, 1978, and completed November 22, 1978, pursuant to Special Instructions dated March 7, 1978, and Supplemental Special Instructions dated November 14, 1978, for Group No. 560, Nevada.

Sec. 19



UNITED STATES DEPARTMENT OF THE INTERIOR
BUREAU OF LAND MANAGEMENT
Denver, Colorado March 4, 1980

This plat is strictly conformable to the approved field notes, and the survey, having been correctly executed in accordance with the requirements of law and the regulations of this Bureau, is hereby accepted.

For the Director

Chief, Cadastral Survey
Examination and Approval Staff