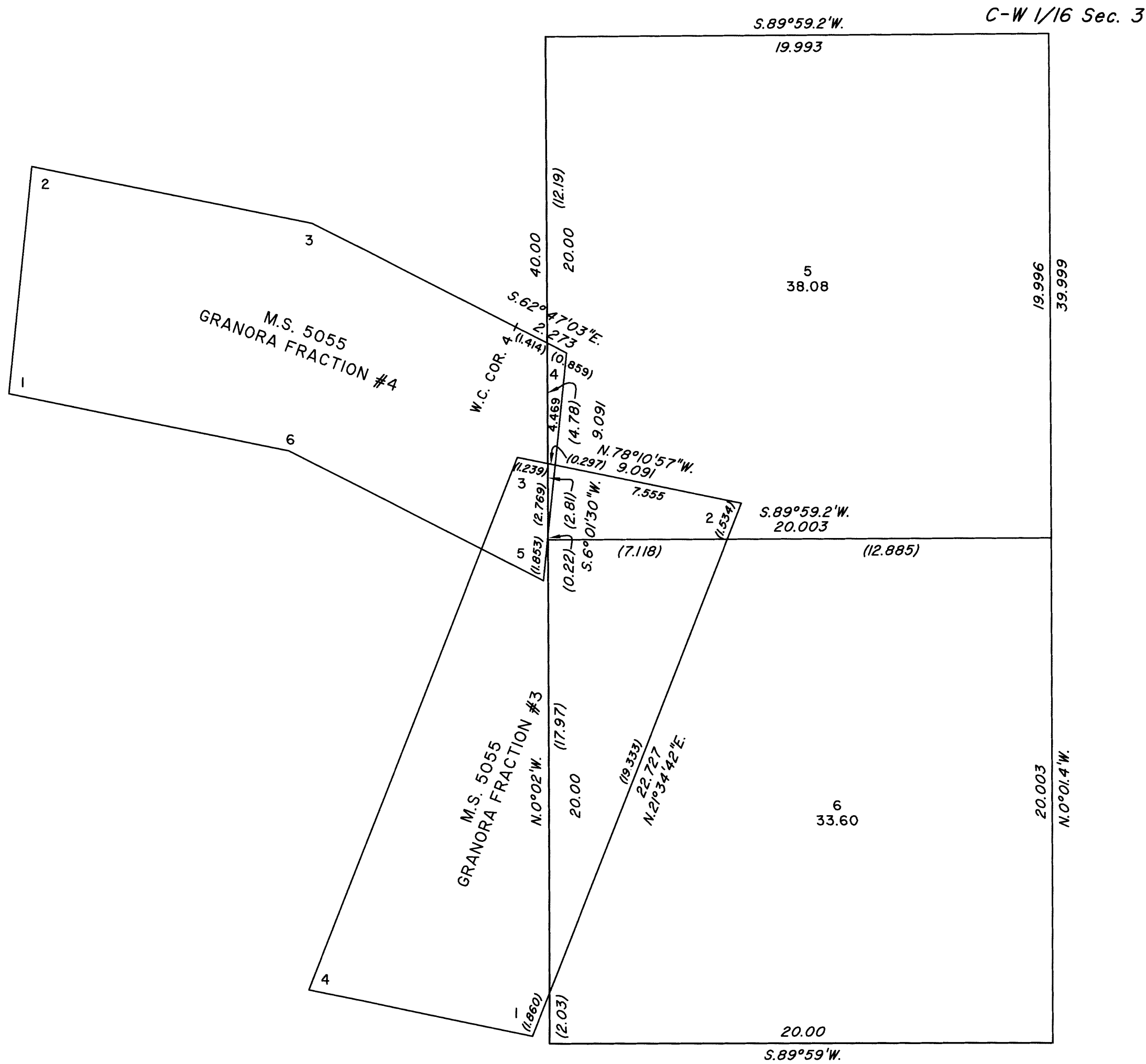
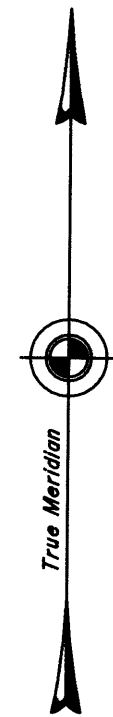


TOWNSHIP 7 SOUTH, RANGE 41 1/2 EAST, OF THE MOUNT DIABLO MERIDIAN, NEVADA
SUPPLEMENTAL PLAT OF THE W1/2SW1/4 SECTION 3



This plat showing a subdivision of the W1/2SW1/4 of sec. 3, Township 7 South, Range 41 1/2 East, Mount Diablo Meridian, Nevada, based upon the plat accepted March 8, 1995 and the mineral survey records, is prepared to accommodate a direct land sale under provisions of the Federal Land Policy and Management Act.

Plat prepared by Brandon K. Grace, Cadastral Surveyor, beginning July 6, 2017 and completed July 6, 2017, pursuant to Special Instructions dated July 6, 2017, and Assignment Instructions dated July 6, 2017, for Group No. 973, Nevada.

Except as indicated hereon, the lotting and areas are shown on the plat approved March 8, 1995.

UNITED STATES DEPARTMENT OF THE INTERIOR
BUREAU OF LAND MANAGEMENT

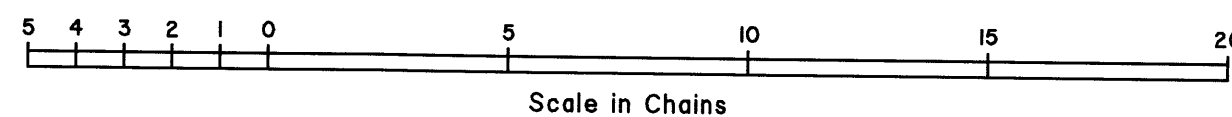
Reno, Nevada July 18, 2017

This plat, showing amended lottings, is based upon the official records, and having been correctly prepared in accordance with the requirements of the law and regulations of this Bureau, is hereby accepted.

For the Director

Mark O. Hammering

Chief Cadastral Surveyor for Nevada



BKG

T. 7 S., R. 41 1/2 E., M.D.M.