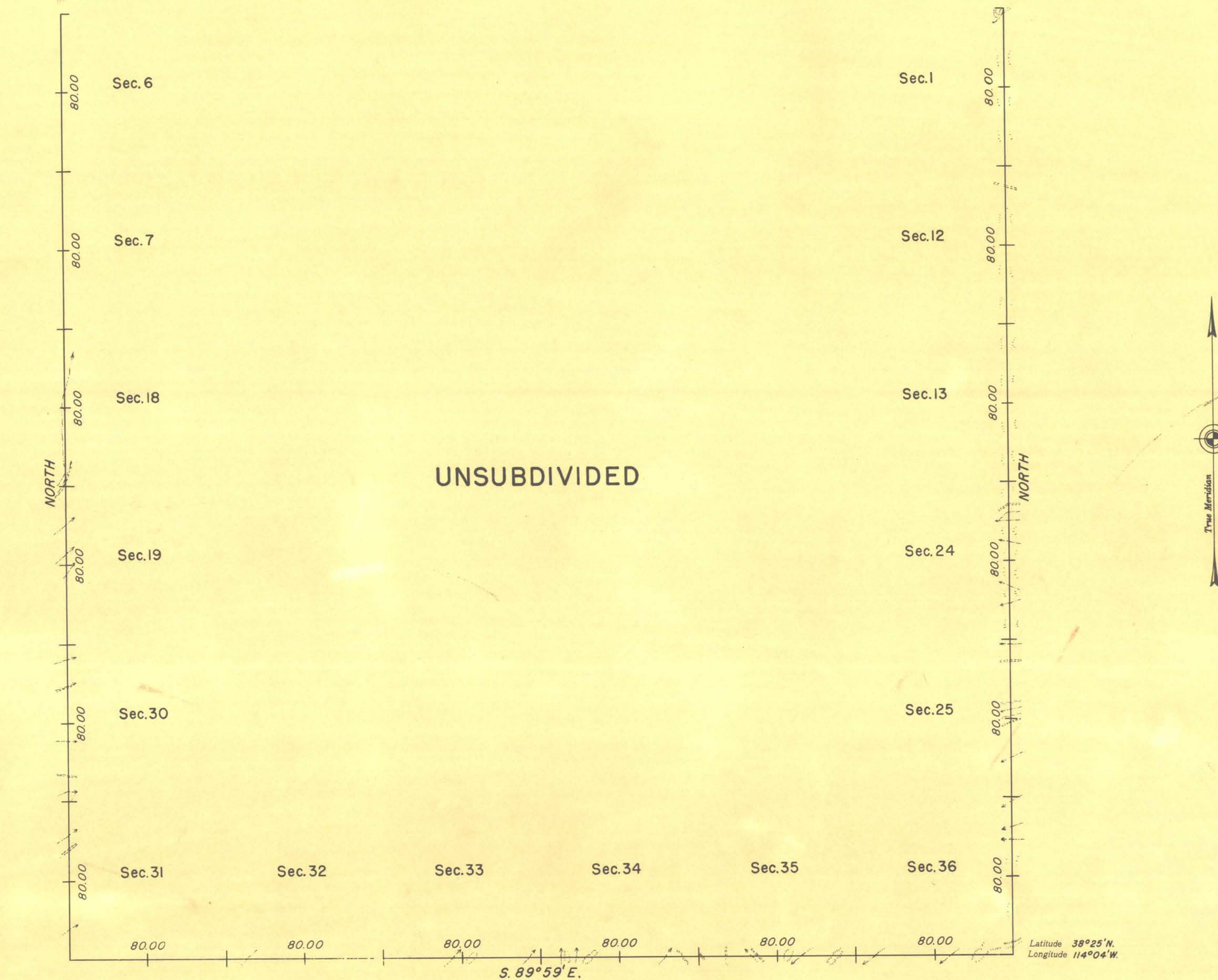


TOWNSHIP NO. 7 NORTH, RANGE NO. 70 EAST OF THE MOUNT DIABLO MERIDIAN, NEVADA.



10 5 0 10 20 40 80
Scale: 1 inch=40 chains.

UNITED STATES DEPARTMENT OF THE INTERIOR
BUREAU OF LAND MANAGEMENT

Denver, Colorado, August 23, 1946.

This plat is strictly conformable to the field notes
of the survey which have been examined and approved.

Washington, D.C. June 17, 1947

The survey represented by this plat, having been
correctly executed in accordance with the requirements
of law and the regulations of this office, is hereby accepted.

LINES DESIGNATED	BY WHOM SURVEYED	GROUP NO.	DATE OF SPECIAL INSTRUCTIONS	WHEN SURVEYED	
				BEGUN	COMPLETED
Exterior, S.	William H. Craigie			May 13, 1913	May 14, 1913
Exterior, E. & W.	James W. Hardison	264	October 5, 1939	Sept. 18, 1945	Oct. 4, 1945

C. J. Anthony
Acting Chief Cadastral Engineer

Thomas C. Howell
Assistant Director