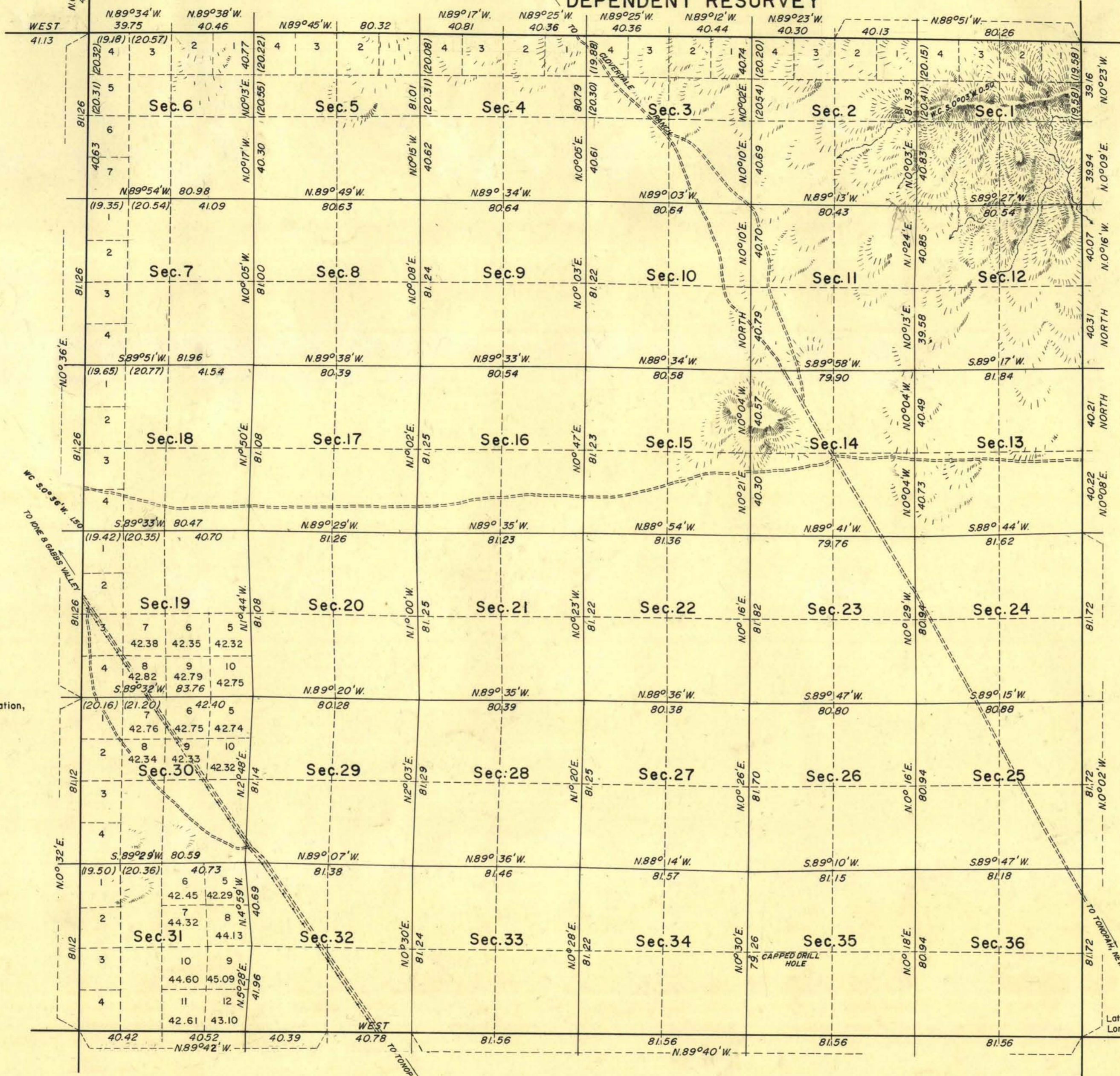


TOWNSHIP 7 NORTH, RANGE 40 EAST, OF THE MOUNT DIABLO MERIDIAN, NEVADA.

DEPENDENT RESURVEY



True Meridian
 Mean Magnetic Declination,
 16° 30' E.

History of the earlier surveys is contained in the field notes.

This plat represents a dependent resurvey of the boundaries and subdivisional lines of T. 7 N., R. 40 E., Mount Diablo Meridian, Nevada, designed to restore the corners in their original locations, according to the best available evidence; lottings and areas (except as shown hereon) are as shown on the plat approved February 25, 1881.

Survey executed by Dewitt A. Crain, Cadastral Surveyor, November 25, 1959 to January 19, 1960 under special instructions, dated August 18, 1959, for Group 385, Nevada.

UNITED STATES DEPARTMENT OF THE INTERIOR
 BUREAU OF LAND MANAGEMENT
 Washington, D.C. October 12, 1962

This plat is strictly conformable to the approved field notes, and the survey, having been correctly executed in accordance with the requirements of law and the regulations of this Bureau, is hereby accepted.

For the Director
D. L. Remington
 Chief, Division of Engineering

Latitude 38° 24' 58.24" N.
 Longitude 117° 25' 19.92" W.

Scale in Chains
 Area Resurveyed, 23,040.74 Acres.

1290 a

T. 7 N., R. 40 E.

not filmed