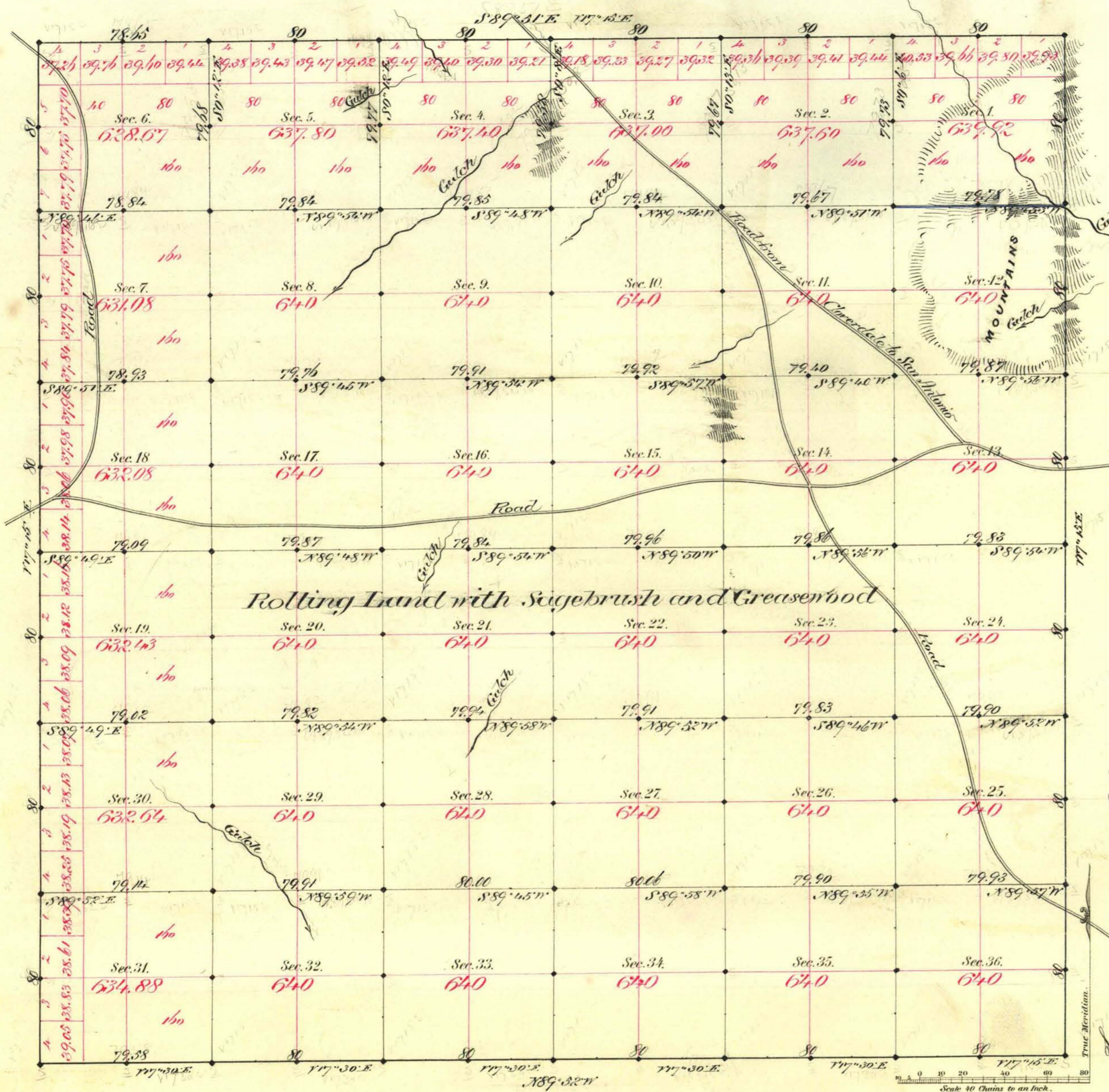


TOWNSHIP N^o 7 NORTH RANGE N^o 40 EAST MOUNT DIABLO MERIDIAN



Aggregate Area of Public Land Surveyed 22,981.50 Ac.

Commenced Dec 11th 1880
Completed " 17th "

Subdivisions run with a variation of 17° 15' E

Survey Designated	By Whom Surveyed	Date of Contract	Amount of Survey	When Surveyed
Township Line	Horne & Payne	Nov 20 th 1880	23 - 48 - 48	1880
Subdivisions West	"	"	58 - 70 - 07	Decr " "
" East	"	"	79 - 78	" " "

The above Map of Township N^o 7 North of Range N^o 40 East Mount Diablo Meridian is strictly conformable to the field notes of the survey thereof on file in this Office, which have been examined and approved.

Surveyor General's Office,
Virginia City Nev.
February 25th 1881

C. A. Paris
Sur. Gen. Nev.