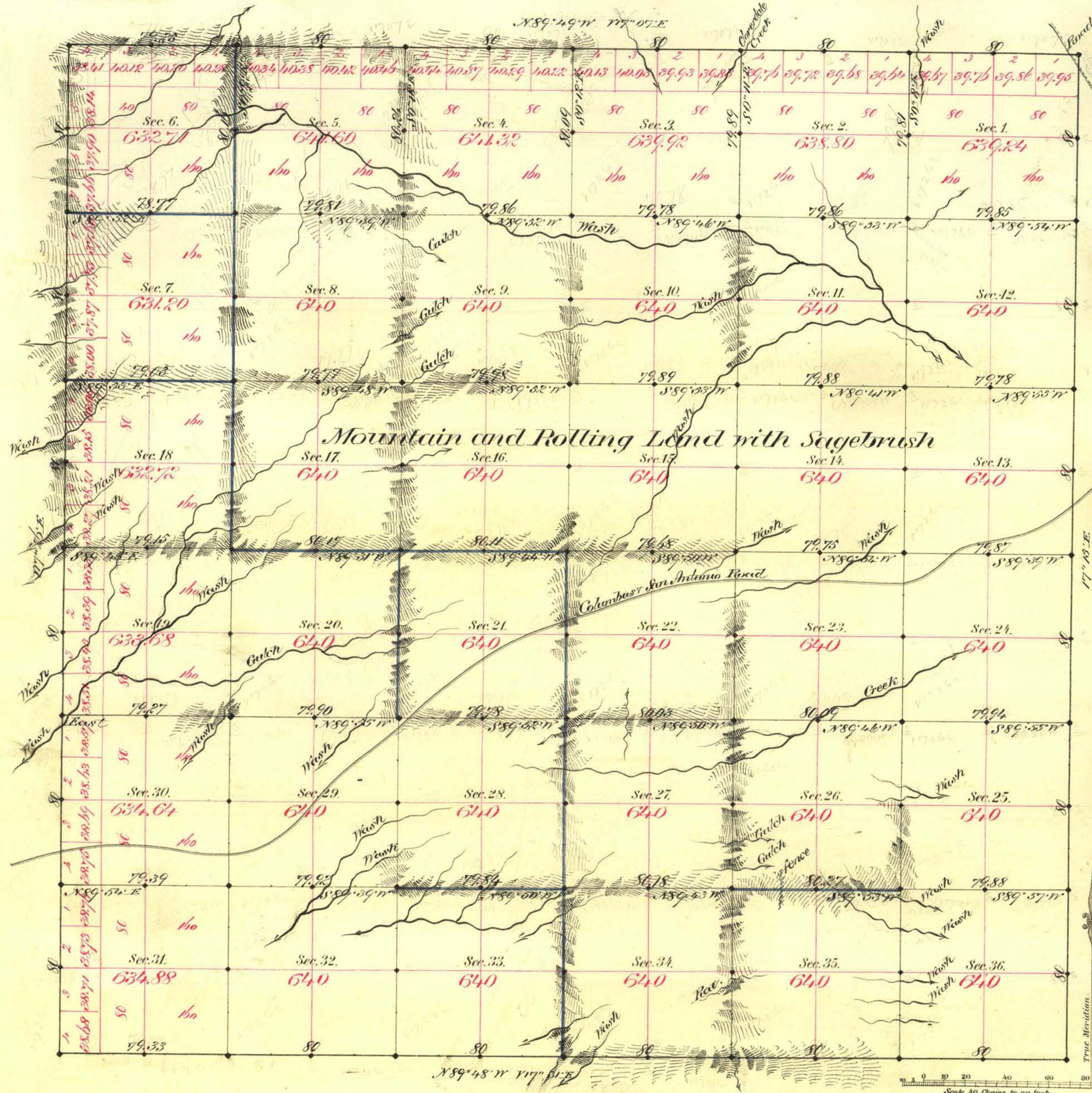


TOWNSHIP N^o 7 NORTH RANGE N^o 39 EAST MOUNT DIABLO MERIDIAN



Aggregate Area of Public Land Surveyed 23,000.71 ac.

Survey commenced January 1st 1881
Completed " 14th "

Subdivision run with a variation of 17' 26" East

Survey Designated	By Whom Surveyed	Date of Contract	Amount of Survey	When Surveyed
Survey Strip	Blair & Peain	Nov. 13 th 1880	25 - 78 - 38	1880
Subdivision Block	"	"	42 - 75 - 32	January 1881
"	"	"	12 - 78 - 35	"

962 Com.
102
"

The above Map of Township N^o 7 North of Range N^o 39 East of Mount Diablo Meridian is strictly conformable to the field notes of the survey thereof on file in this Office, which have been examined and approved.

Surveyor General's Office,
Columbia City, Ind.
February 25th 1881

C. J. Davis
Sur. Genl.