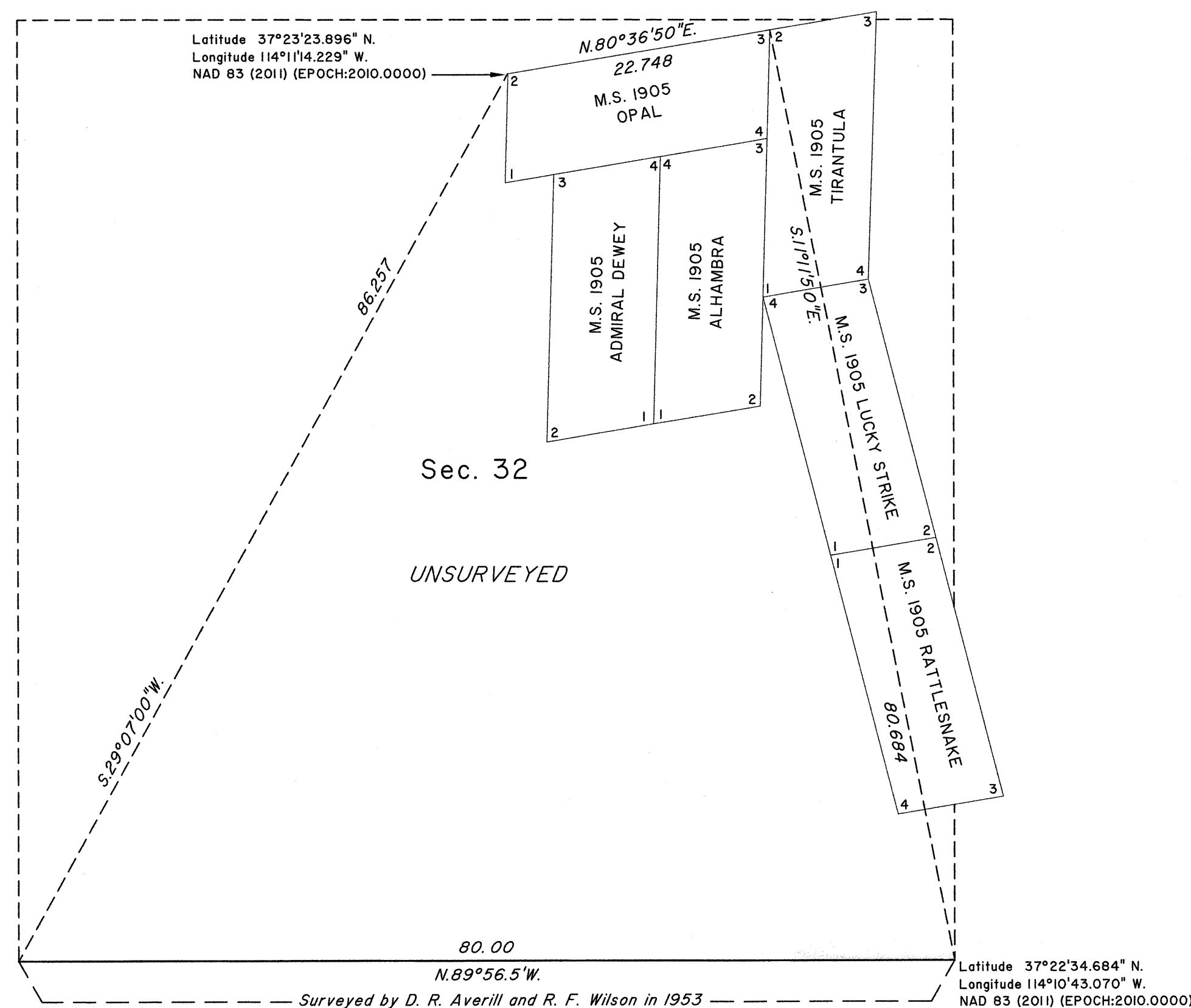
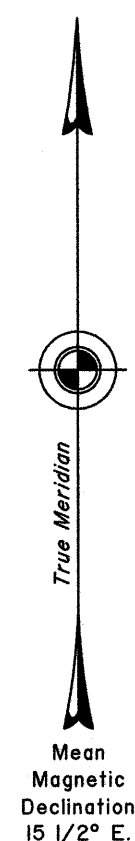


# TOWNSHIP 6 SOUTH, RANGE 70 EAST, OF THE MOUNT DIABLO MERIDIAN, NEVADA

## DEPENDENT RESURVEY



A history of surveys is contained in the field notes.

This plat represents the dependent resurvey of a portion of Mineral Survey No. 1905, designed to restore the corners in their true original locations according to the best available evidence, in unsurveyed Township 6 South, Range 70 East, Mount Diablo Meridian, Nevada.

Unless otherwise indicated in the field notes, all courses and distances shown on the plat along the perimeter of mineral segregation areas were taken or computed from the appropriate mineral survey record.

Survey executed by Michael E. Swope, Cadastral Surveyor, beginning February 20, 2014, and completed March 24, 2014, pursuant to Special Instructions dated February 19, 2014, for Group No. 931, Nevada.

UNITED STATES DEPARTMENT OF THE INTERIOR  
BUREAU OF LAND MANAGEMENT

Reno, Nevada January 12, 2015

This plat is strictly conformable to the approved field notes, and the survey, having been correctly executed in accordance with the requirements of law and the regulations of this Bureau, is hereby accepted.

For the Director

*Michael E. Swope*

Chief Cadastral Surveyor for Nevada

