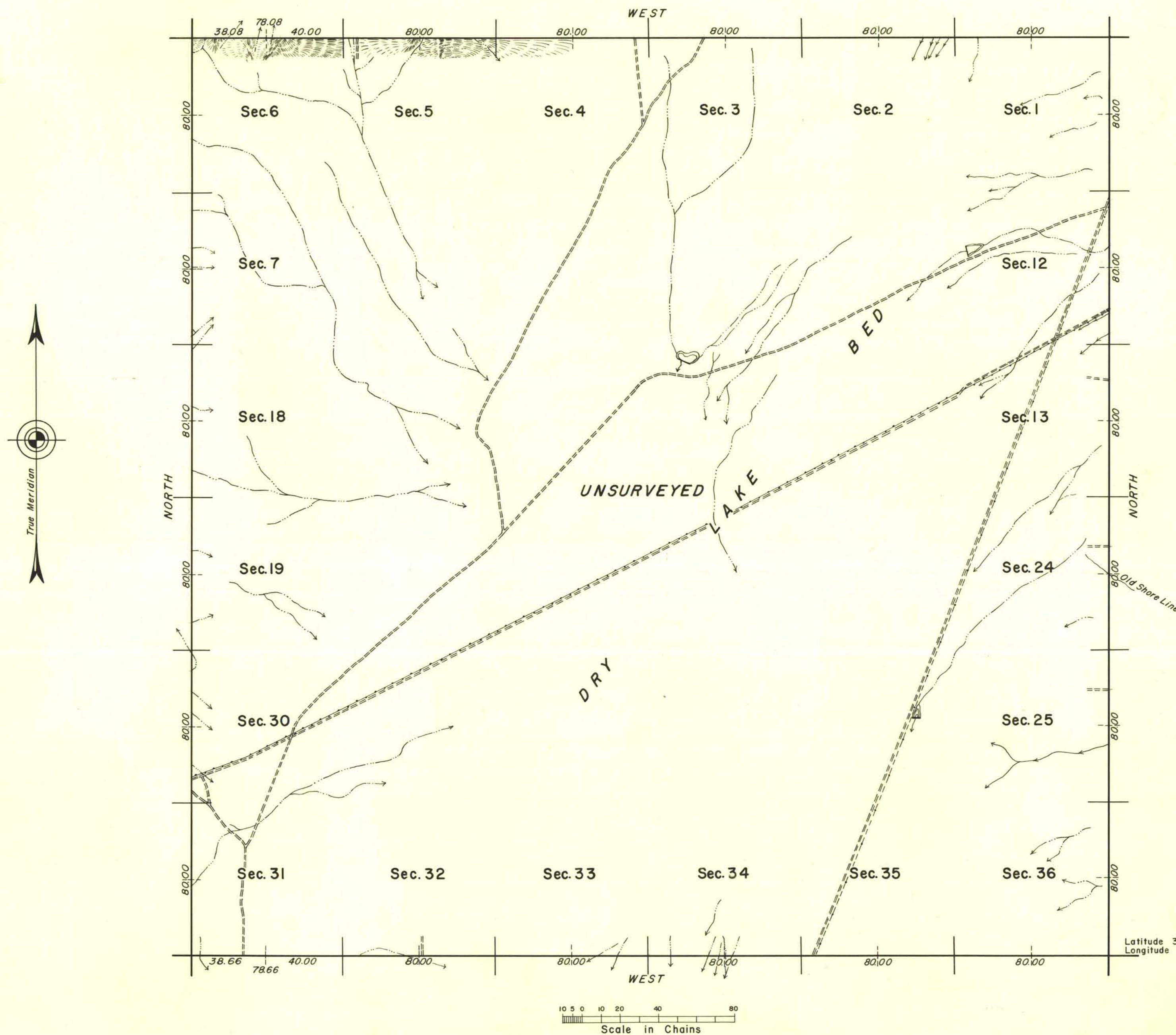


TOWNSHIP 6 SOUTH, RANGE 63 EAST, MOUNT DIABLO MERIDIAN, NEVADA



The south and west boundaries were surveyed concurrently under this same group and the record appears in the field notes for T. 7 S., R. 63 E. and T. 6 S., R. 62 E., respectively.

Survey of the north and east boundaries was executed by Dupree R. Averill July 10 to 14, 1953, under special instructions for Group 355, Nevada, dated August 7, 1952.

UNITED STATES DEPARTMENT OF THE INTERIOR
BUREAU OF LAND MANAGEMENT
Washington, D. C. June 11, 1957

This plat is strictly conformable to the approved field notes, and the survey, having been correctly executed in accordance with the requirements of law and the regulations of this Bureau, is hereby accepted.

For the Director

Donald B. Curren

Acting Cadastral Engineering Staff Officer