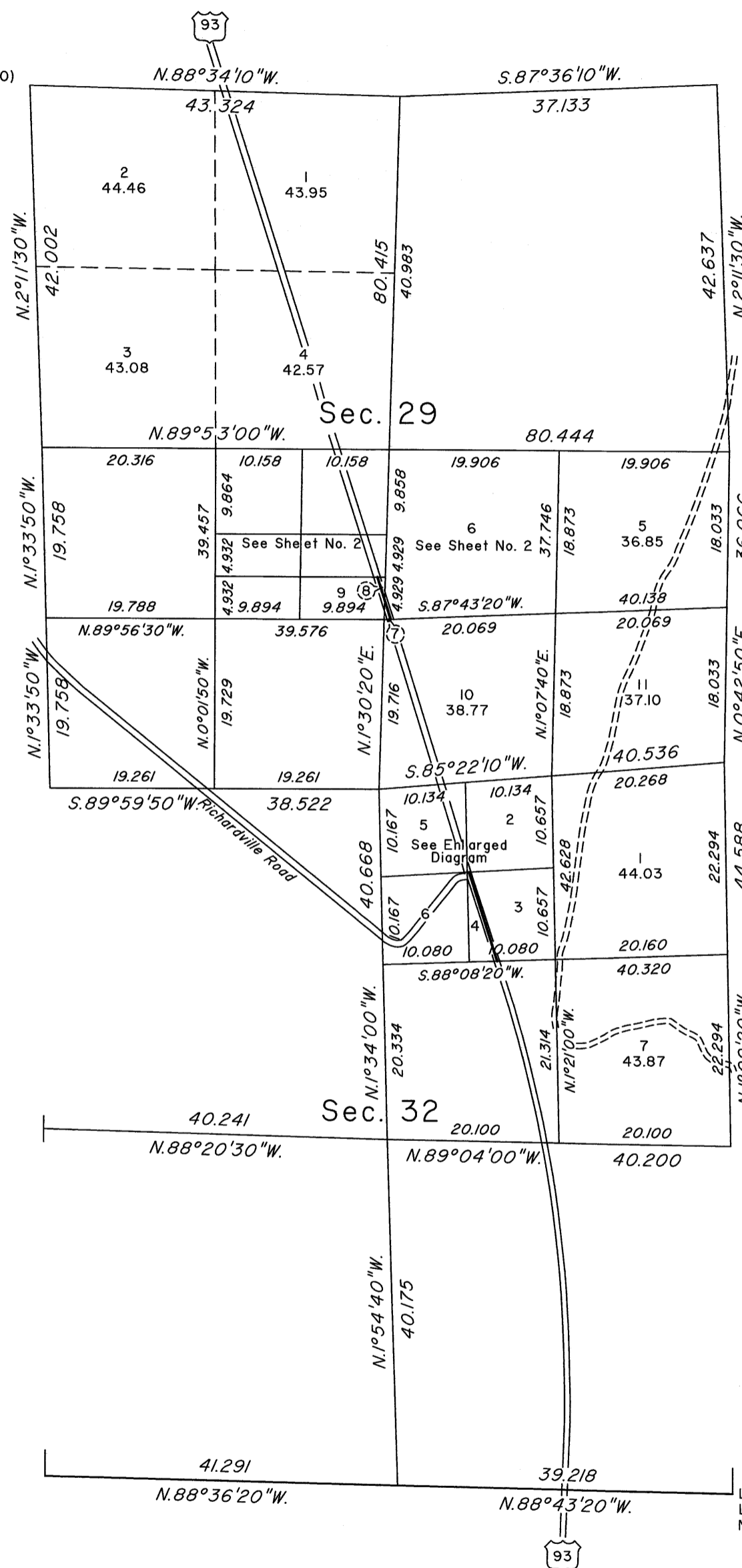


# TOWNSHIP 6 SOUTH, RANGE 61 EAST, OF THE MOUNT DIABLO MERIDIAN, NEVADA

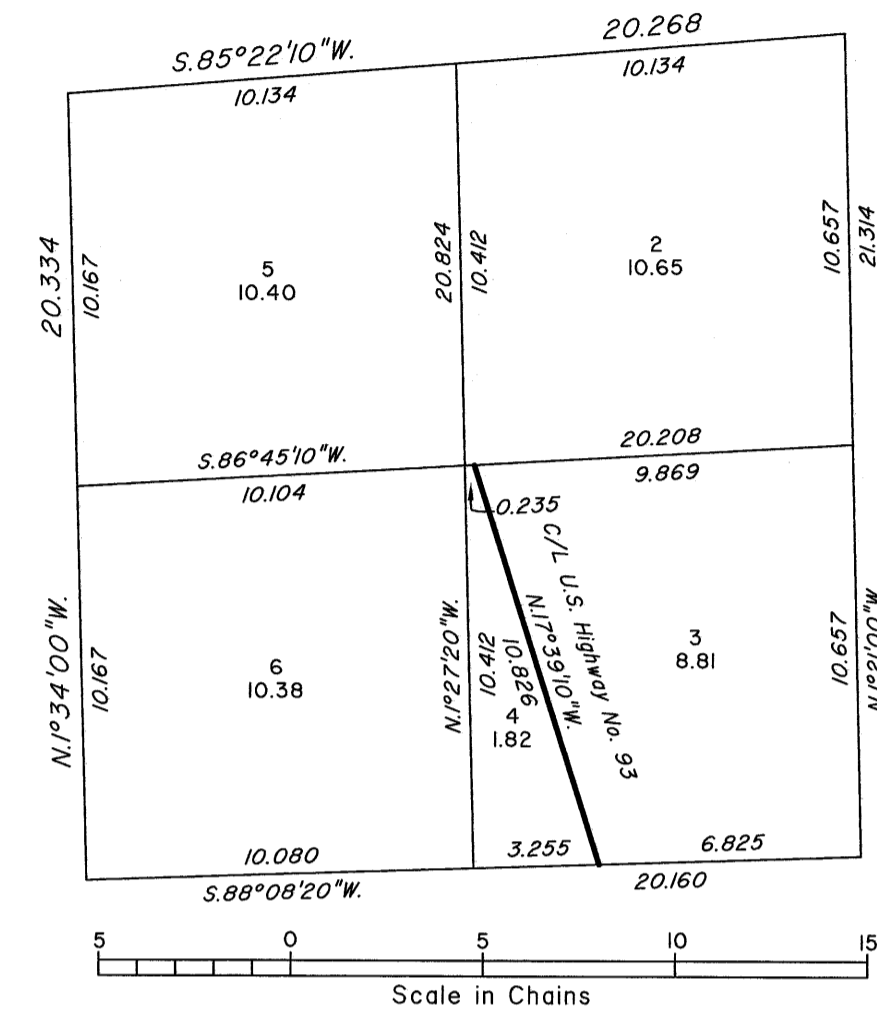
## DEPENDENT RESURVEY, SUBDIVISION AND METES-AND-BOUNDS SURVEYS

Enlarged Diagram  
NW 1/4 NE 1/4 Section 32

Latitude 37°24'22.219" N.  
Longitude 115°10'26.751" W.  
NAD 83 (2011) (EPOCH:2010.0000)



Latitude 37°22'35.776" N.  
Longitude 115°09'18.998" W.  
NAD 83 (2011) (EPOCH:2010.0000)



A history of surveys is contained in the field notes.

This plat, in two sheets, represents the dependent resurvey of a portion of the south boundary and a portion of the subdivisional lines designed to restore the corners in their true original locations according to the best available evidence and the subdivision of sections 29 and 32 and metes-and-bounds surveys of the centerline of U.S. Highway No. 93, through portions of sections 29 and 32, Township 6 South, Range 61 East, Mount Diablo Meridian, Nevada.

Except as indicated hereon, the lottings and areas are as shown on the plat approved October 20, 1870.

Survey executed by Michael E. Swope, Cadastral Surveyor, beginning July 4, 2013 and completed February 3, 2015, pursuant to Special Instructions dated June 4, 2013, Supplemental Special Instructions dated May 22, 2014 and Supplemental Special Instructions dated June 9, 2014, for Group No. 925, Nevada.

UNITED STATES DEPARTMENT OF THE INTERIOR  
BUREAU OF LAND MANAGEMENT

Reno, Nevada April 8, 2015

This plat is strictly conformable to the approved field notes, and the survey, having been correctly executed in accordance with the requirements of law and the regulations of this Bureau, is hereby accepted.

For the Director

*Michael S. Hamming*

Chief Cadastral Surveyor for Nevada