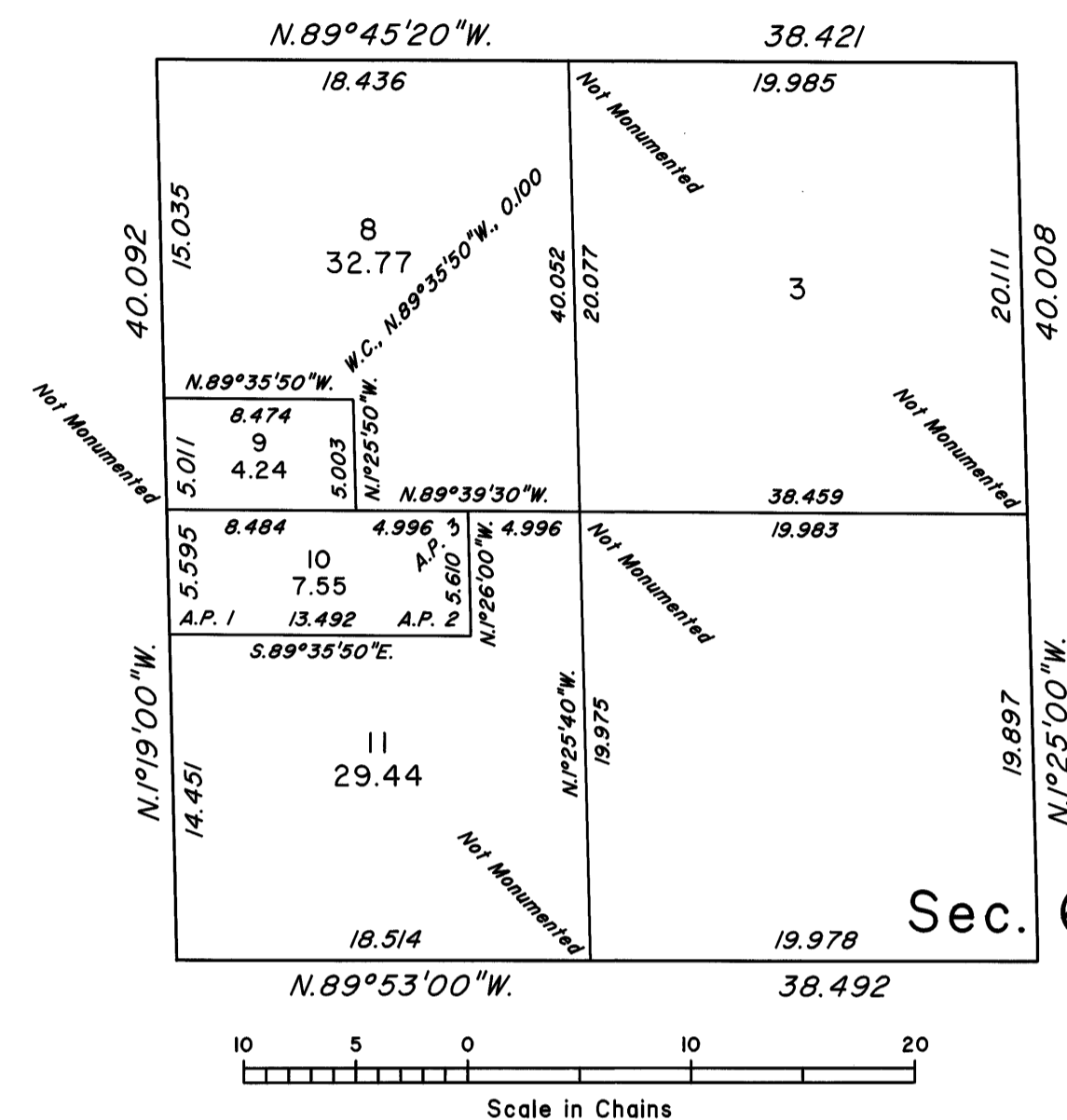
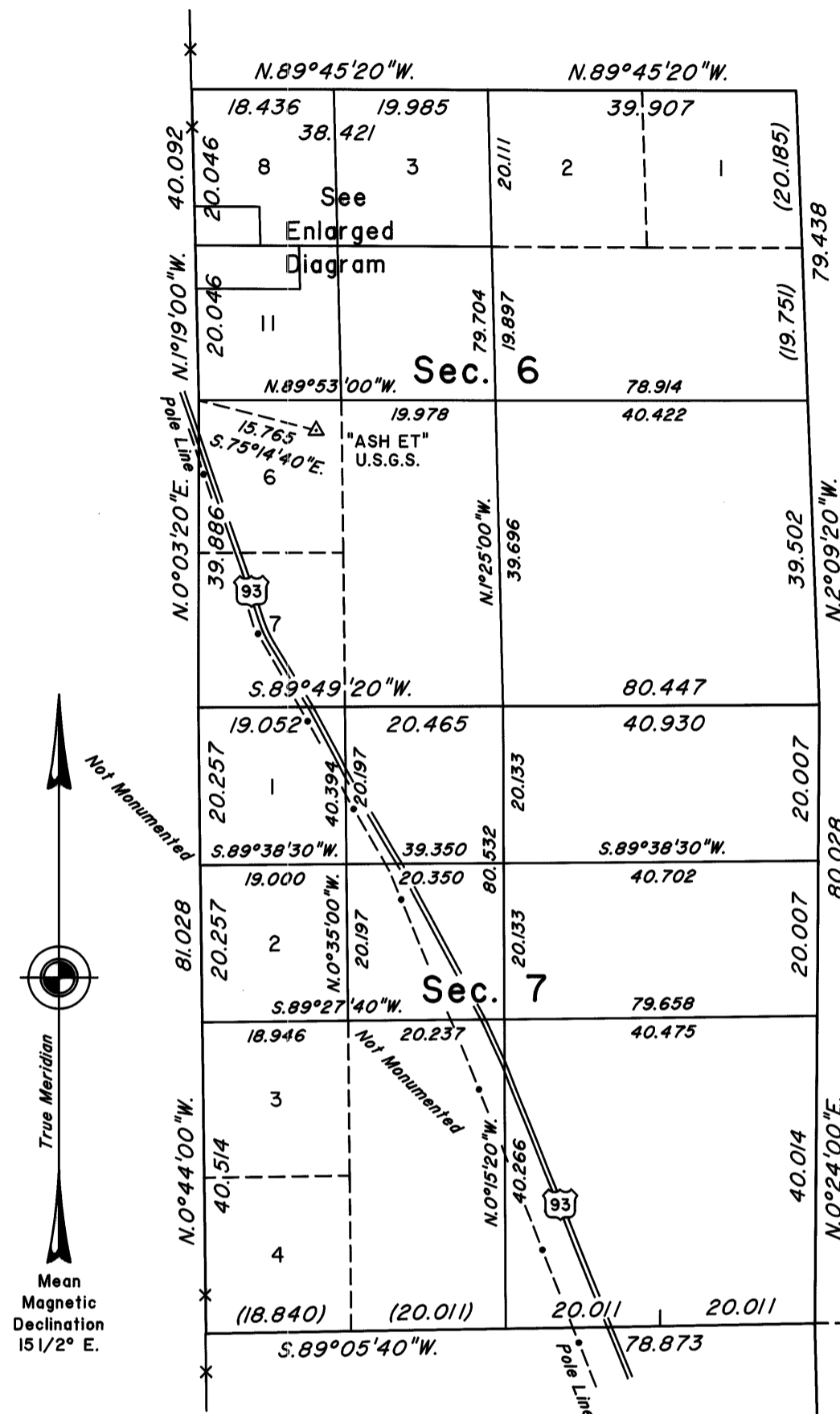


# TOWNSHIP 6 SOUTH, RANGE 61 EAST, OF THE MOUNT DIABLO MERIDIAN, NEVADA

## DEPENDENT RESURVEY AND SUBDIVISIONS

### ENLARGED DIAGRAM



Surveyed by

E. B. Monroe

in 1870

Sec. 9 | Sec. 10  
 Sec. 16 | Sec. 15

A history of surveys is contained in the field notes.

This plat represents the dependent resurvey of portions of the north and west boundaries and a portion of the subdivisional lines designed to restore the corners in their true original locations according to the best available evidence, the subdivision of sections 6 and 7, and a metes-and-bounds survey in section 6, Township 6 South, Range 61 East, Mount Diablo Meridian, Nevada.

Except as indicated hereon, the lottings and areas are as shown on the plat approved October 20, 1870.

Survey executed by Richard A. Zaninovich, Cadastral Surveyor, beginning September 28, 1998, and completed October 6, 1998, pursuant to Special Instructions dated September 28, 1998, for Group No. 776, Nevada.

UNITED STATES DEPARTMENT OF THE INTERIOR  
 BUREAU OF LAND MANAGEMENT

Reno, Nevada May 18, 1999

This plat is strictly conformable to the approved field notes, and the survey, having been correctly executed in accordance with the requirements of law and the regulations of this Bureau, is hereby accepted.

For the Director

*David J. Clark*  
 Chief Cadastral Surveyor, Nevada

# T.6S., R.61E., M.D.M.

OFFICIALLY FILED  
 NEVADA STATE OFFICE  
 at 10:00 AM on May 20, 1999